

METES AND BOUNDS

A PORTION OF THE SW1/4 OF THE NE1/4

LOCATED IN SECTION 24, T1N, R7E, BHM
RAPID CITY, PENNINGTON COUNTY, SOUTH DAKOTA

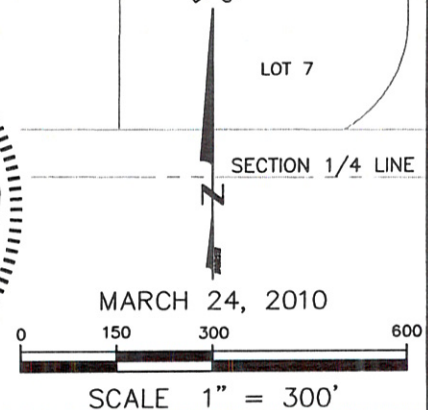
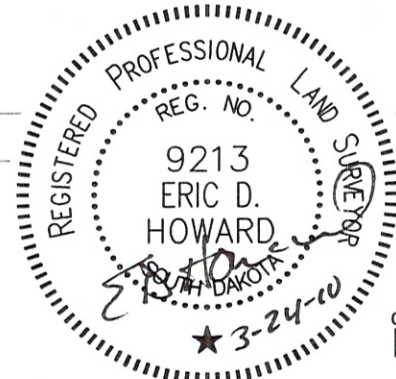
RECEIVED

MAR 24 2010

Rapid City Growth Management Department



LINE	LENGTH	BEARING
L1	133.11'	S69°17'20"E
L2	364.26'	S00°00'01"E
L3	81.20'	N89°44'34"W
L4	372.85'	N12°34'45"E



RENNER & ASSOCIATES, LLC.
 616 SIXTH ST. * RAPID CITY, SD 57701
 PHONE: 605/721-7310 * FAX: 605/721-7313
 EMAIL: GARY@RENNERASSOC.COM