

January 10, 2010

Mary Bosworth, P.E.
Growth Management Department
Rapid City, SD 57701

Re: Eagle Ridge Apartments

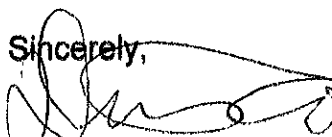
Mary,

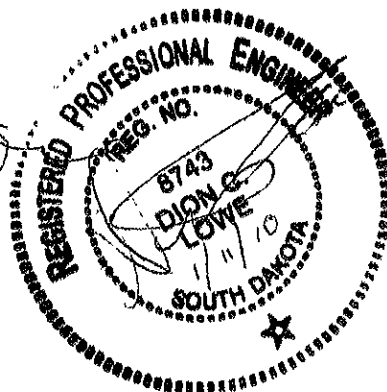
This is a request to provide erosion control in the gullies shown in the highlighted areas of the attached plan in lieu of re-grading the entire slope. The erosion control will consist of the following:

1. Clear the snow from the medium to large gullies.
2. Place 9" compost filter sock the length of each gully.
3. Secure the compost filter socks with rebar due to the frozen ground.

These gullies provide the path for the concentrated storm water flow from the development to the west. The compost filter socks will protect from further erosion of the gullies while allowing the storm water to flow down these gullies, while collecting sediment in the compost matrix.

Sincerely,


Dion Lowe, PE
President
Dioten Engineering



RECEIVED

JAN 11 2010

Rapid City Growth
Management Department

Dioten Engineering, Inc. † 7245 Tanager Drive † RCSD 57702

www.dioten.com † Diotenengineering@yahoo.com

605.430.7213

RECEIVED

JAN 1 2010

Rapid City Growth Management Department

69PD096



FRONT DESIGN INC. ARCHITECTURE | ENGINEERING GIS | SURVEYING

517 7th street rapid city sd 57701
ph: 605.342.9470 fax: 605.342.2377
www.4front.biz

EAGLE RIDGE PRD AMENDMENT

PHASE 2

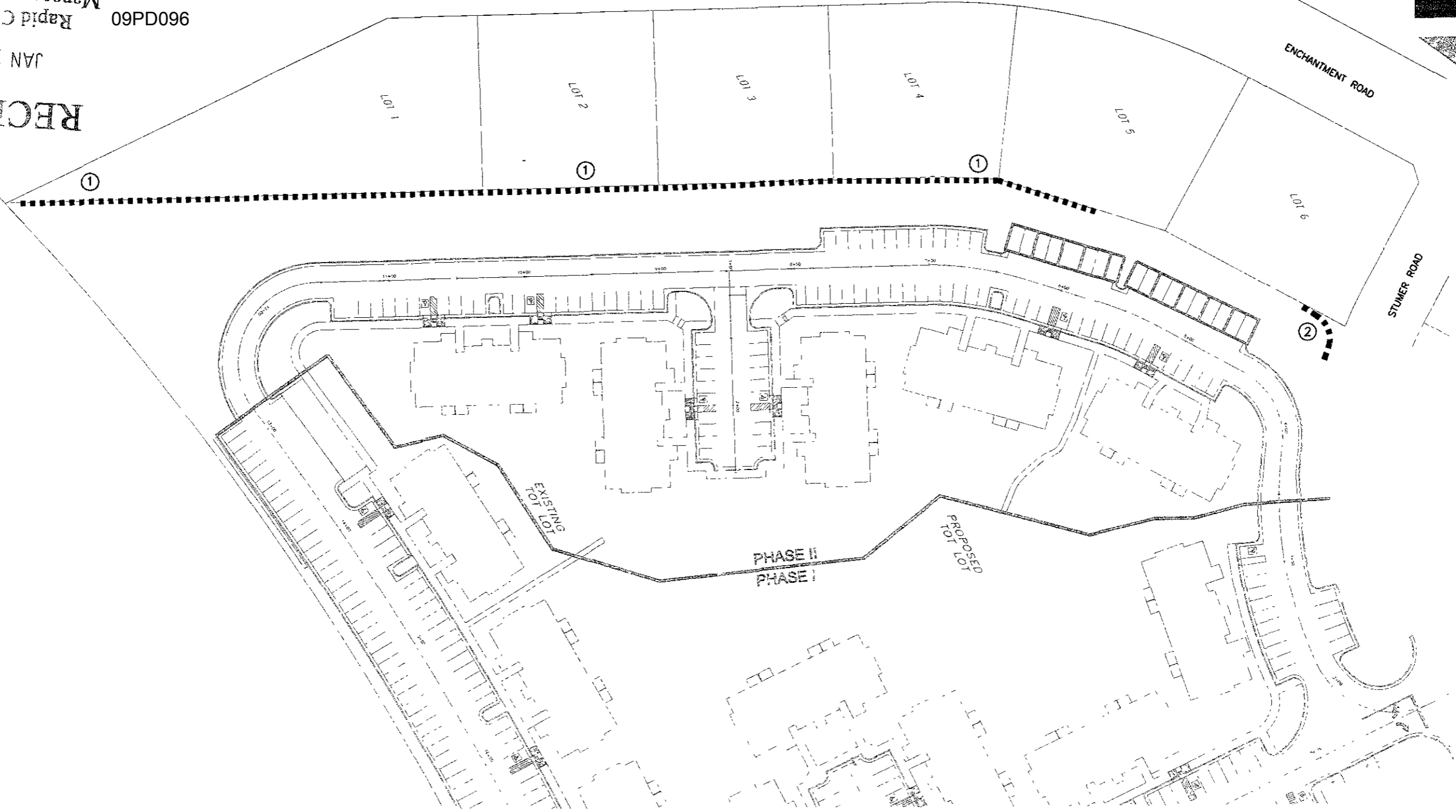
JOB NUMBER: 07.1369.001
DATE: 12/09/09

RAPID CITY, SOUTH DAKOTA

REVISIONS	

PHASE 2 INTERIM EROSION CONTROL PLAN

SHEET 1 OF 1



EROSION CONTROL NOTES

- ① INSTALL 667 SY OF EROSION CONTROL BLANKET
- ② INSTALL MINI SEDIMENT RETENTION DEVICE-60 LF

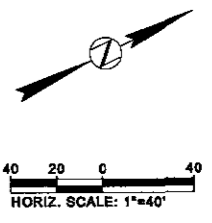
1. TO PREVENT EROSION ONTO ADJACENT PROPERTIES, THE AREA ADJACENT TO THE WEST PROPERTY LINE SHALL BE SECURED WITH EROSION CONTROL BLANKET IN AREAS SHOWN.

2. PRIOR TO PLACEMENT, 3 INCHES OF TOPSOIL SHALL BE PLACED UNDERNEATH THE EROSION CONTROL BLANKET AND HAND SEEDED WITH A ROAD DITCH MIX. EROSION CONTROL BLANKET SHALL BE INSTALLED ACCORDING TO MANUFACTURE'S RECOMENDATIONS.

3. IN AREAS WHERE THE POTENTIAL FOR CONCENTRATED FLOW DOWN THE SLOPE EXISTS, 3 INCH OR LARGER ROCK SHALL BE PLACED ON AND DOWN GRADIENT FROM THE EROSION CONTROL BLANKET ON THE SLOPE TO PROVIDE ENERGY DISAPATION.

4. TO PREVENT SEDIMENT RUNOFF IN THE NORTHWEST CORNER OF PHASE 2, A MINI SEDIMENT RENTIONION DEVICE SHALL BE PLACED IN AREAS SHOWN.

5. A MINI SEDIMENT RETENTION DEVICE SHALL CONSIST OF 3-12 INCH COMPOST FILTER SOCKS, TWO ON BOTTOM, ONE ON TOP. ALL FILTER SOCKS SHALL BE STAKED DOWN ACCORDING TO MANUFACTURE'S RECOMMENDATIONS.



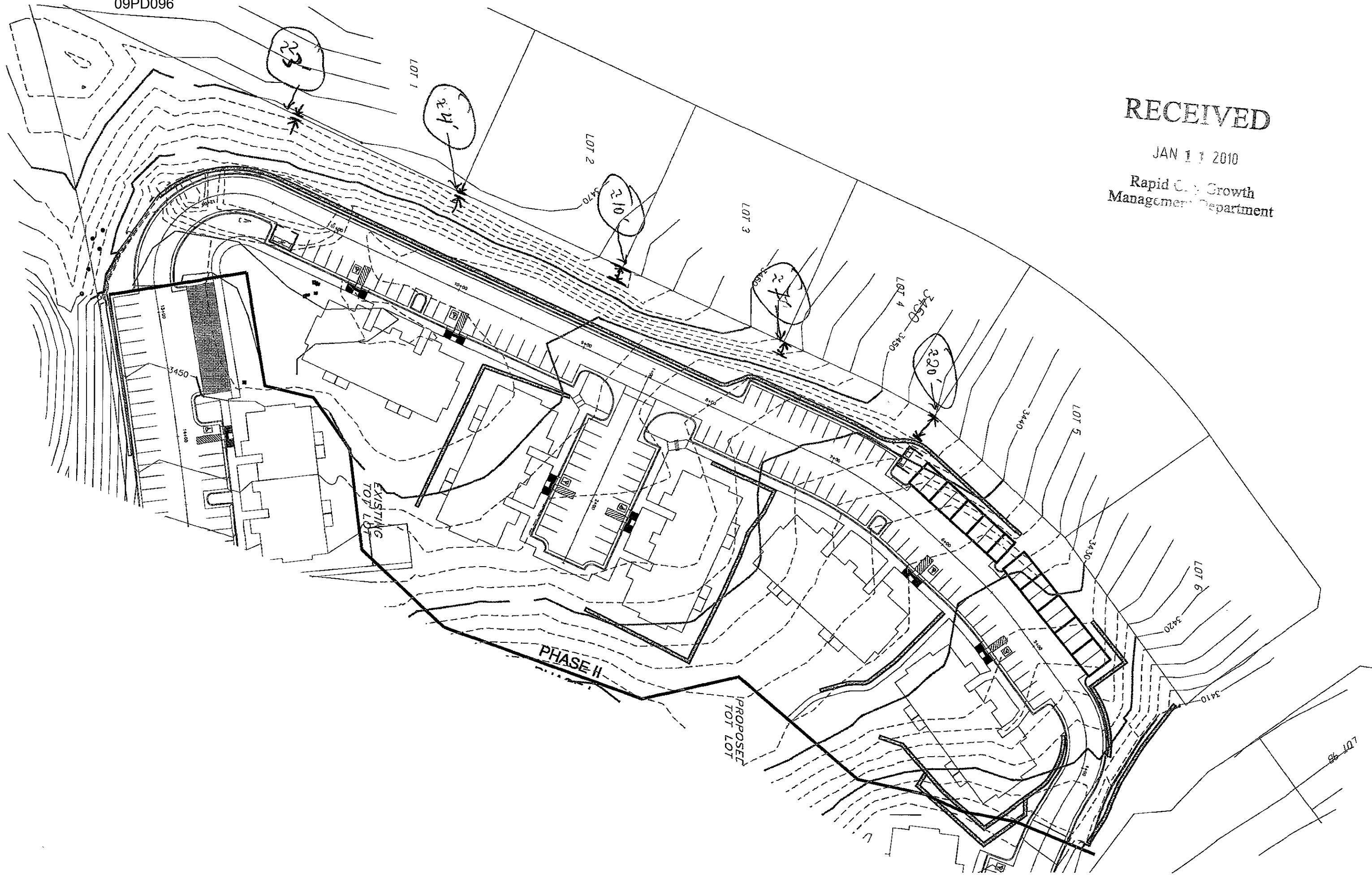
FILE LOCATION: 1369-E01-SITE.DGN DRAWN BY: RJD

Copyright 2007 All rights reserved. No part of this document may be reproduced in any form or by any means without permission from FourFront Design, Inc.

RECEIVED

JAN 17 2010

Rapid City Growth
Management Department



EXISTING
LOT LOT

PHASE II

PROPOSED
LOT LOT

LOT 98