

RECEIVED

OCT 14 2005

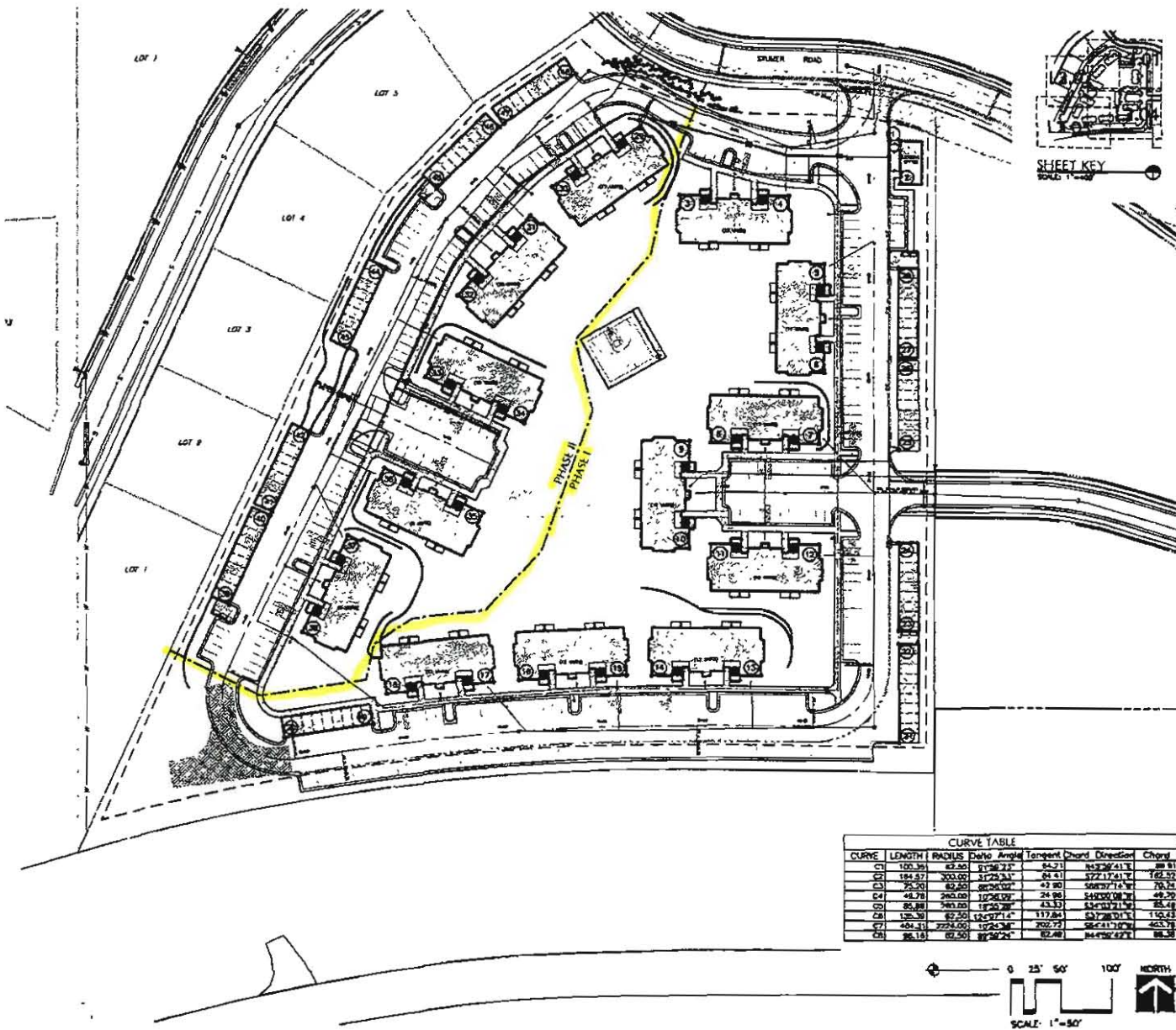
Rapid City Growth
Management Department

GENERAL LAYOUT NOTES

- CONTRACTOR SHALL LOCATE AND PROTECT ALL EXISTING UTILITIES, SITE FEATURES, AND VEGETATION DETERMINED TO REMAIN. CONTRACTOR SHALL REVIEW AND PROTECT ANY DAMAGED ITEMS AT HIS COST TO OWNER. CONTRACTOR IS RESPONSIBLE FOR CONSIDERING ANY DAMAGED ITEMS PRIOR TO CONSTRUCTION.
- ALL PLANTING BED AREAS ARE TO BE STAGED BY LANDSCAPE CONTRACTOR PRIOR TO BEGINNING BED PREPARATION. THIS LOT IS TO BE APPROVED BY LANDSCAPE ARCHITECT.
- CONTRACTOR SHALL NOTIFY LANDSCAPE ARCHITECT OF ANY DISCREPANCIES OR CHANGES PRIOR TO PROCEEDING.
- ALL DIMENSIONS ARE FINISHED AND PERPENDICULAR TO FEATURES BEING DIMENSIONED FROM UNLESS NOTED OTHERWISE.

④ BUILDING LOCATION COORDINATES

1	N 432281.73 E 1241364.67	25	N 431871.00 E 1241383.22
2	N 432281.73 E 1241364.67	26	N 432281.73 E 1241364.67
3	N 432281.73 E 1241364.67	27	N 432281.73 E 1241364.67
4	N 432281.73 E 1241364.67	28	N 432281.73 E 1241364.67
5	N 432281.73 E 1241364.67	29	N 432281.73 E 1241364.67
6	N 432281.73 E 1241364.67	30	N 432281.73 E 1241364.67
7	N 432281.73 E 1241364.67	31	N 432281.73 E 1241364.67
8	N 432281.73 E 1241364.67	32	N 432281.73 E 1241364.67
9	N 432281.73 E 1241364.67	33	N 432281.73 E 1241364.67
10	N 432281.73 E 1241364.67	34	N 432281.73 E 1241364.67
11	N 432281.73 E 1241364.67	35	N 432281.73 E 1241364.67
12	N 432281.73 E 1241364.67	36	N 432281.73 E 1241364.67
13	N 432281.73 E 1241364.67	37	N 432281.73 E 1241364.67
14	N 432281.73 E 1241364.67	38	N 432281.73 E 1241364.67
15	N 432281.73 E 1241364.67	39	N 432281.73 E 1241364.67
16	N 432281.73 E 1241364.67	40	N 432281.73 E 1241364.67
17	N 432281.73 E 1241364.67	41	N 432281.73 E 1241364.67
18	N 432281.73 E 1241364.67	42	N 432281.73 E 1241364.67
19	N 432281.73 E 1241364.67	43	N 432281.73 E 1241364.67
20	N 432281.73 E 1241364.67	44	N 432281.73 E 1241364.67
21	N 432281.73 E 1241364.67	45	N 432281.73 E 1241364.67
22	N 432281.73 E 1241364.67	46	N 432281.73 E 1241364.67
23	N 432281.73 E 1241364.67	47	N 432281.73 E 1241364.67
24	N 432281.73 E 1241364.67	48	N 432281.73 E 1241364.67



CURVE TABLE

CURVE	LENGTH	RADIUS	Delta	Angle	Tangent	Chord	Direction	Chord
C1	100.36	42.30	97.9621°	84.21	103.26241°	88.81		
C2	184.87	300.00	37.2431°	64.41	172.1741°	162.50		
C3	23.30	80.00	88.2432°	42.80	168.9713°	78.25		
C4	44.71	260.00	17.2432°	24.88	144.9718°	48.29		
C5	85.88	540.00	17.2432°	43.33	134.9717°	85.48		
C6	128.39	82.50	124.9714°	117.84	137.2810°	116.43		
C7	404.31	2724.00	17.2431°	202.72	168.9718°	405.77		
C8	36.15	62.50	89.2431°	62.48	164.9717°	68.38		

Project Name: **Black Hills Estates Eagle Ridge**
 Location: **Rapid City, South Dakota**

Client: **Black Hills Estates Eagle Ridge**

Overall Layout Plan

Scale: **1"=50'**

Sheet: **4 of 4**

Drawn by: **W**
 Approved by: **W**
 Project No: **05**
 Date: **October 14, 2005**

Wysys Associates, Inc.
 Landscape Architecture
 Civil & Mechanical Design
 218 South Street, Rapid City, South Dakota 57701-3878
 Phone: 605-342-1888
 Fax: 605-342-1889
 www.wysysassociates.com