

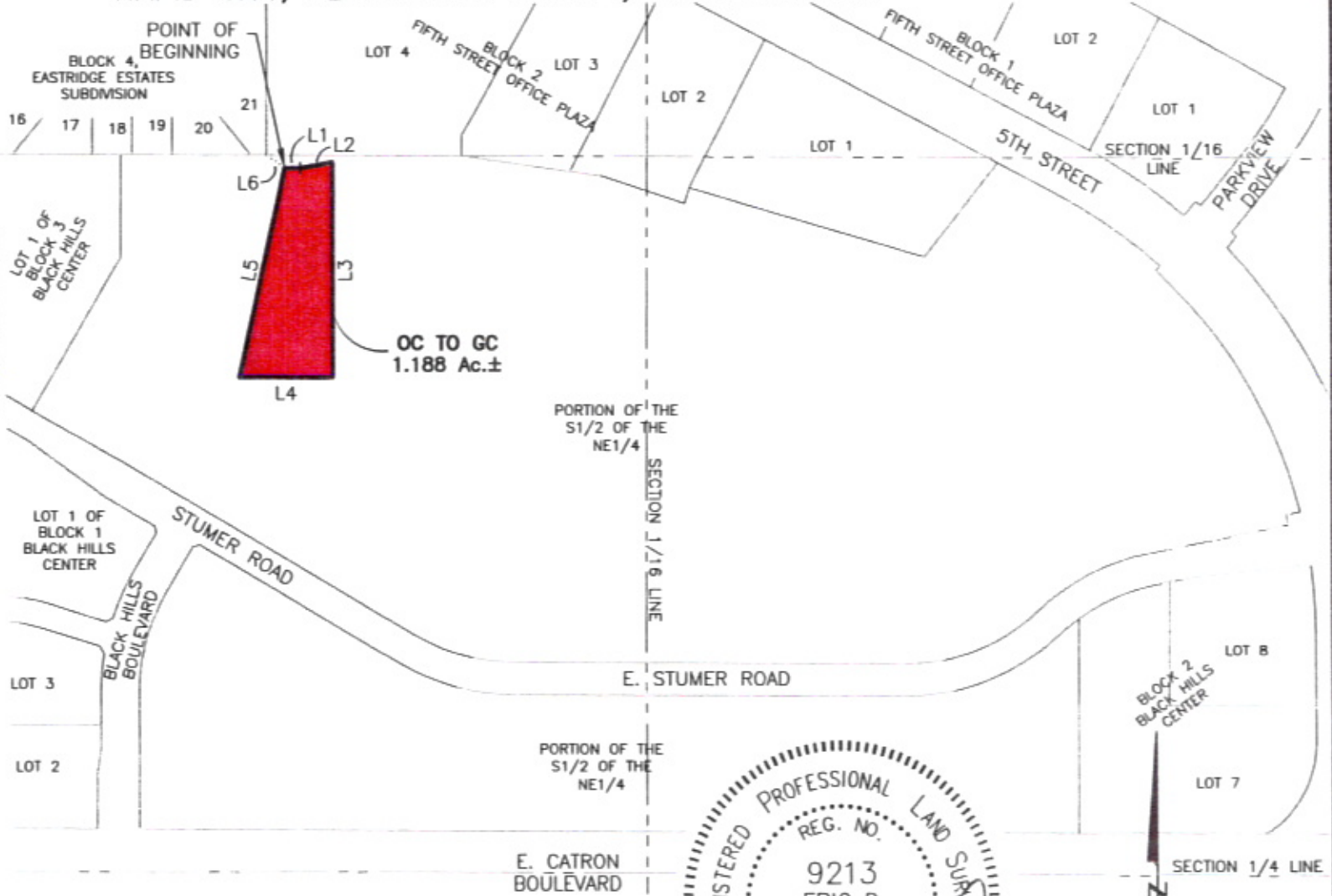
RECEIVED

FEB 26 2010

Rapid City Growth
Management Department

METES AND BOUNDS
A PORTION OF THE
SW1/4 OF THE NE1/4
LOCATED IN SECTION 24, T1N, R7E, BHM
RAPID CITY, PENNINGTON COUNTY, SOUTH DAKOTA

LINE	LENGTH	BEARING
L1	29.43'	S89°44'01"E
L2	61.38'	N80°14'20"E
L3	397.37'	S00°00'01"E
L4	176.15'	N89°44'34"W
L5	395.82'	N12°34'56"E
L6	42.23'	S54°58'38"E



RENNER & ASSOCIATES, LLC.

616 SIXTH ST. * RAPID CITY, SD 57701
PHONE: 605/721-7310 * FAX: 605/721-7313
EMAIL: GARY@RENNERASSOC.COM

