

November 17, 2009  
Rev. December 29, 2009  
Basis of Bearings - Assumed

Found LS 1771  
S84°08'30"E  
0.56'  
Not Accepted  
This Survey

Fisk Land Surveying  
& Consulting  
Engineers, Inc.  
1022 Main Street (P.O. Box 8194)  
Rapid City, South Dakota 57709  
(605) 346-1538  
(605) 341-1112 (fx)

Site Plan  
Lot A and B of  
Mahoney Addition No. 2  
SE1/4 of Section 25, T2N, R8E, B.H.M.  
Rapid City, Pennington County, South Dakota

Surveyed by:  
BL, ML

Date  
5/1/09

Drawn by:  
RWF, BL

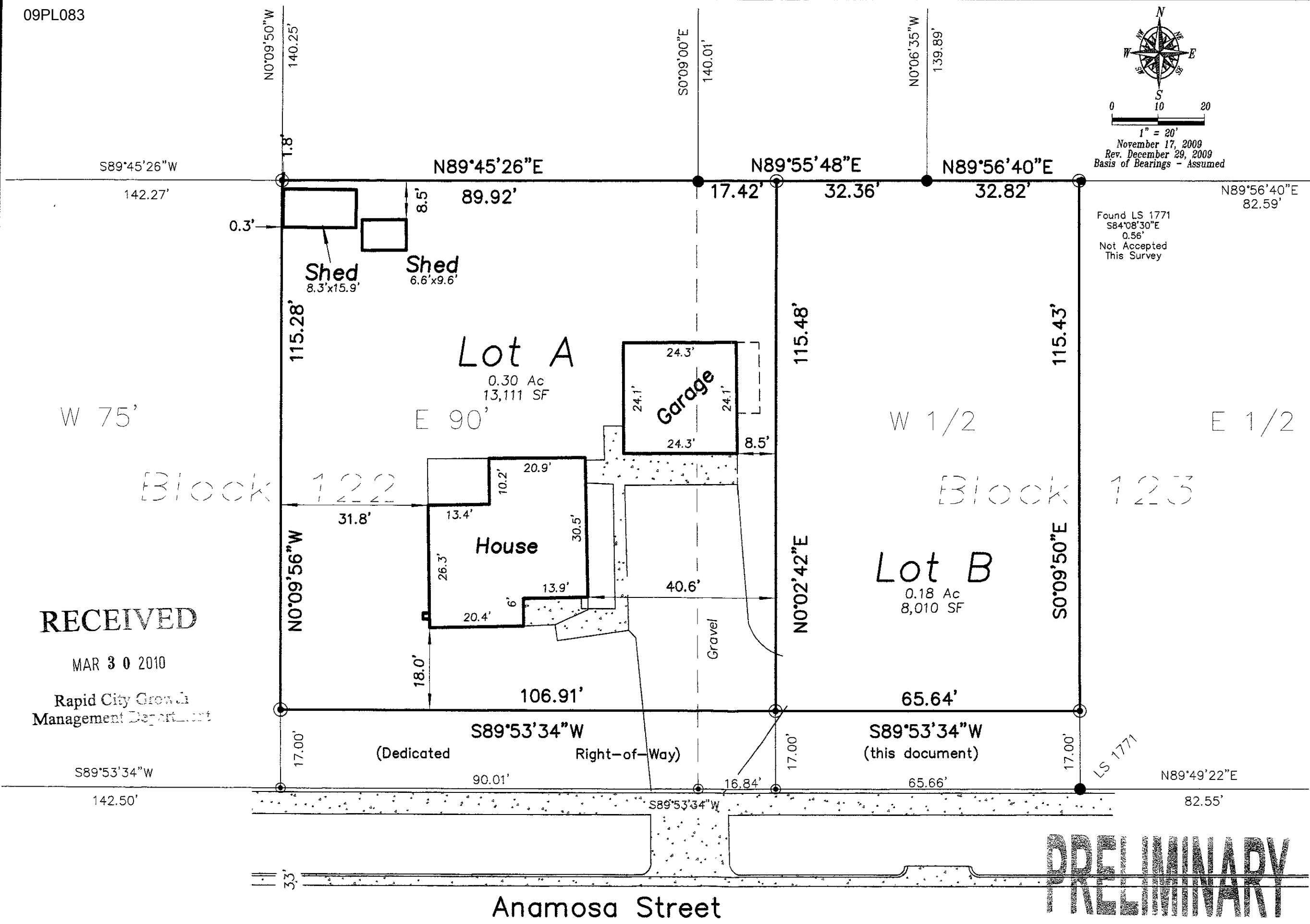
Checked by:  
JF

Revisions  
Dedicated ROW  
12/29/09

Site Plan  
Map

1  
of  
1

Project No.  
08-03-02



RECEIVED  
MAR 30 2010  
Rapid City Growth  
Management Department

PRELIMINARY

Anamosa Street