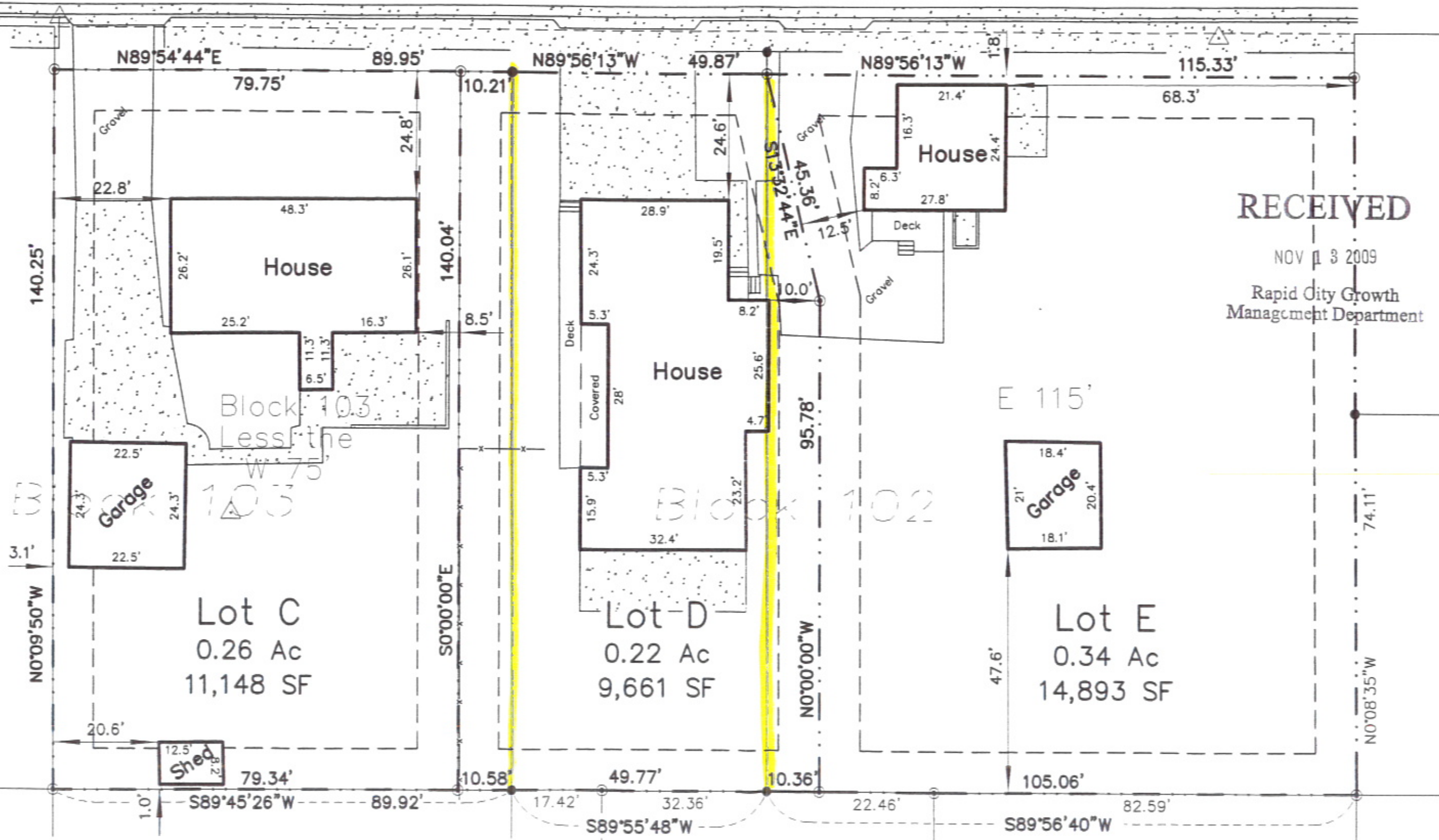
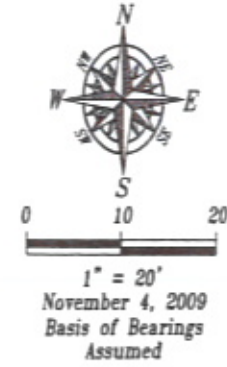


PRELIMINARY

Mac Arthur Street (Asphalt)

8' Utility and Minor Drainage Easements on the interior side of all lot lines except for the existing legal non-conforming structures as shown hereon. At such time as said structures may be removed the 8' easements shall run continuously along said lot lines.



RECEIVED
 NOV 13 2009
 Rapid City Growth
 Management Department

**Fisk Land Surveying
& Consulting, Inc.**
 1022 Main Street (P.O. Box 8154)
 Rapid City, South Dakota 57709
 (605) 348-1536
 (605) 341-1112 (fx)

Proposed Site Plan
 The E 115' of Block 102, less the N 8.5'
 The W 50' of Block 102, less the N 8.5'
 The E 90' of Block 103, less the N 8.5'
 Rapid City, Pennington County, South Dakota

Surveyed by: ML,DR
Date 11/1/09
Drawn by: RWF,BL
Checked by: JF
Revisions
Existing Site Map
1 of 1
Project No. 09-11-02