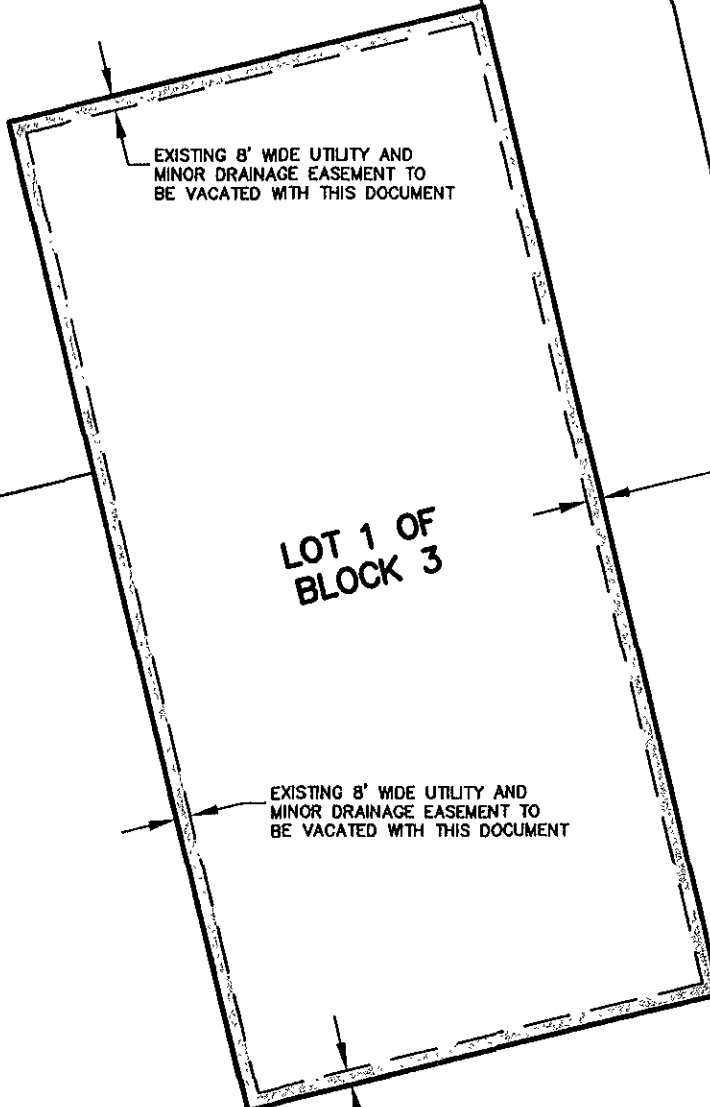


"EXHIBIT A"

NOTE
THE EXISTING EASEMENTS SHOWN HEREON
WERE RECORDED ON THE PLAT FILED IN
PLAT BOOK 30 ON PAGE 56.

UNPLATTED
BALANCE



EXISTING 8' WIDE UTILITY AND
MINOR DRAINAGE EASEMENT TO
BE VACATED WITH THIS DOCUMENT

EXISTING 8' WIDE UTILITY AND
MINOR DRAINAGE EASEMENT TO
BE VACATED WITH THIS DOCUMENT

**LOT 1 OF
BLOCK 3**

EXISTING 8' WIDE UTILITY AND
MINOR DRAINAGE EASEMENT TO
BE VACATED WITH THIS DOCUMENT

CONCOURSE DRIVE R.O.M.

LOT H1

EXISTING 8' WIDE UTILITY AND
MINOR DRAINAGE EASEMENT TO
BE VACATED WITH THIS DOCUMENT

RECEIVED

MAR 10 2010

Rapid City Growth
Management Department

UNPLATTED
BALANCE

EASEMENT VACATION
LOT 1 OF BLOCK 3 OF
RUSHMORE BUSINESS PARK
LOCATED IN NE1/4 SECTION 4, T1N, R8E, BHM
RAPID CITY, SOUTH DAKOTA

FEBRUARY 26, 2010

Surveyed By: MM/RP
Date 1/28/10 & 2/1/10
Drawn By: KJS
Checked By: DW
Location:
NE1/4 SECTION 4
T1N, R8E, BHM



F M G, Inc.

3700 Sturgis Road
Rapid City, SD 57702-0317
(605) 342-4105 FAX (605) 342-4222
www.fmgengineering.com