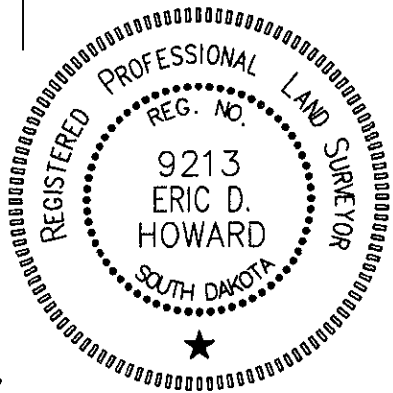
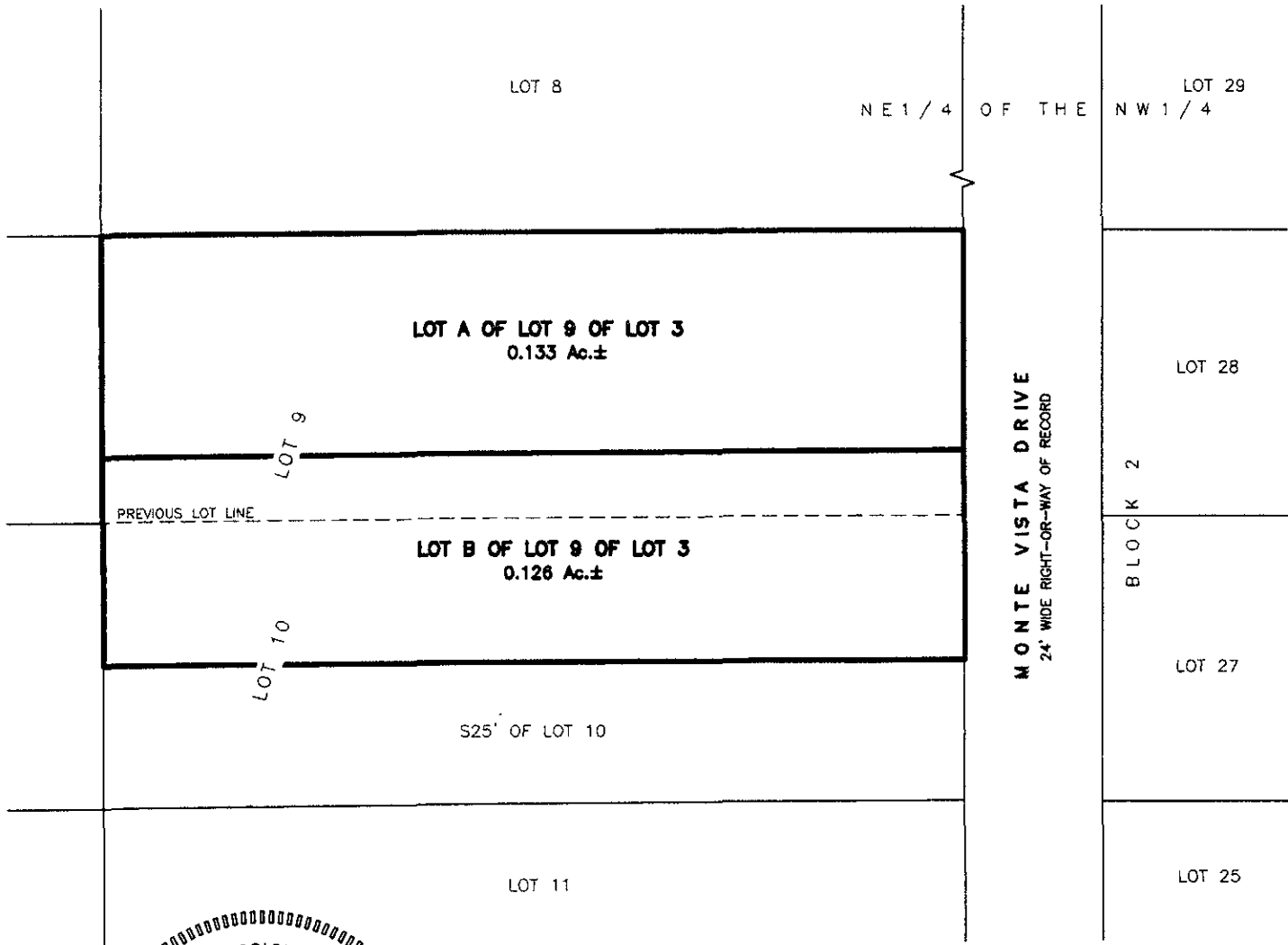


# LOTS A AND B OF LOT 9 OF LOT 3 OF, NE1/4 OF THE NW1/4

(formerly Lot 9 and N25' of Lot 10 of Lot 3 of NE1/4 of the NW1/4  
Section 9, T1N, R7E)

LOCATED IN THE NE1/4 OF THE NW1/4,  
SECTION 9, T1N, R7E, BHM  
RAPID CITY, PENNINGTON COUNTY, SOUTH DAKOTA



**RECEIVED**  
FEB - 5 2018

## Renner & Associates, LLC.

616 Sixth St. \* Rapid City, SD 57701 \* 605/721-7310  
 FAX: 605/721-7313 \* E-MAIL: Gary@RennerAssoc.com  
 \* Spearfish 605/717-0016 \*

Rapid City Growth  
 Management Department



CITY HALL 1903