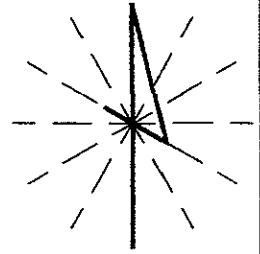


EASEMENT VACATION EXHIBIT

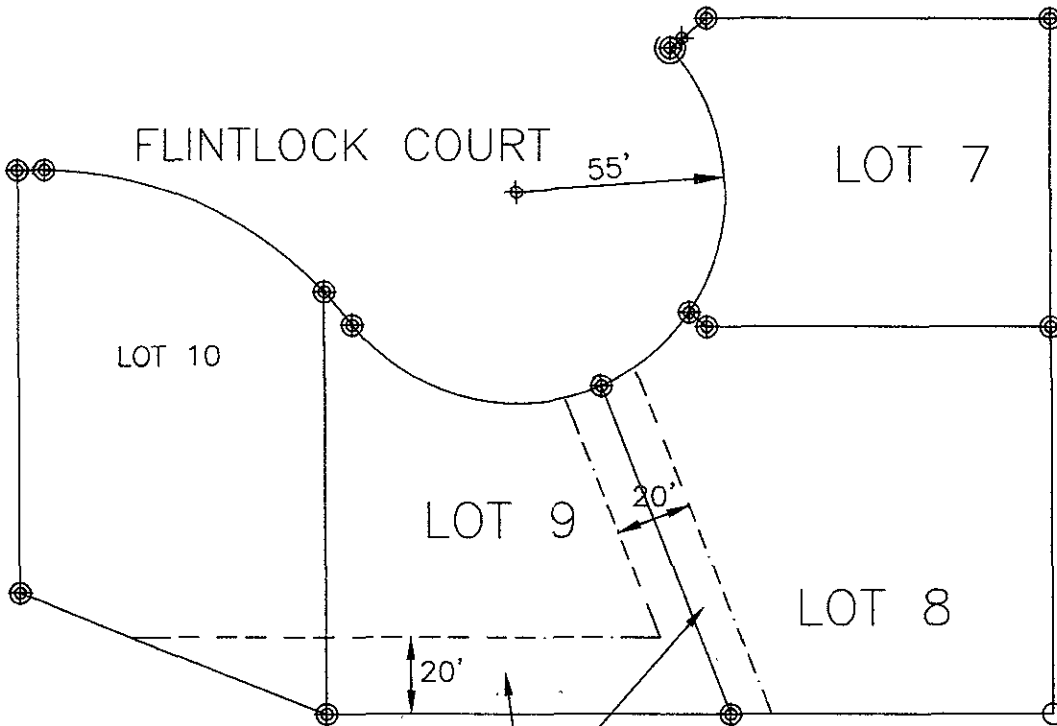
LEGAL DESCRIPTION: LOTS 8 AND 9 OF BLOCK 6 OF MURPHY RANCH ESTATES SUBDIVISION  
LOCATED IN THE NE1/4 OF NW1/4 OF SECTION 14, T1N, R8E, BHM  
PENNINGTON COUNTY, SOUTH DAKOTA.

THIS EASEMENT WAS CREATED BY THE ORIGINAL PLAT OF THESE LOTS FILED ON MAY 13, 2008 IN BOOK 35 ON PAGE 30 AT THE PENNINGTON COUNTY REGISTER OF DEEDS OFFICE.



DATE: 07-28-2009

SCALE: 1"=50'



20' WIDE "MAJOR" DRAINAGE EASEMENT TO BE VACATED BY THIS DOCUMENT

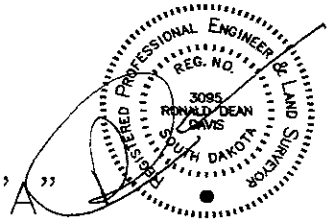
THE EASEMENT ON EACH SIDE OF THIS LOT LINE WILL REVERT BACK TO AN 8' WIDE UTILITY AND MINOR DRAINAGE EASEMENT ON THE INTERIOR SIDE OF ALL LOT LINES CREATED BY THE ORIGINAL PLAT REFERENCED ABOVE.

RECEIVED

JUL 31 2009

Rapid City Growth Management Department

EXHIBIT "A"



I, Ronald D. Davis, registered Engineer and Land Surveyor #3095 of the State of South Dakota, do hereby certify that I did prepare this exhibit for the purposes herein contained.