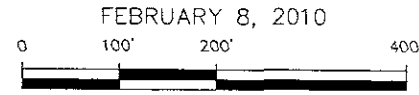


# LOTS 1R & 2R OF BLOCK 1 OF EAST MALL BUSINESS CENTER SUBDIVISION

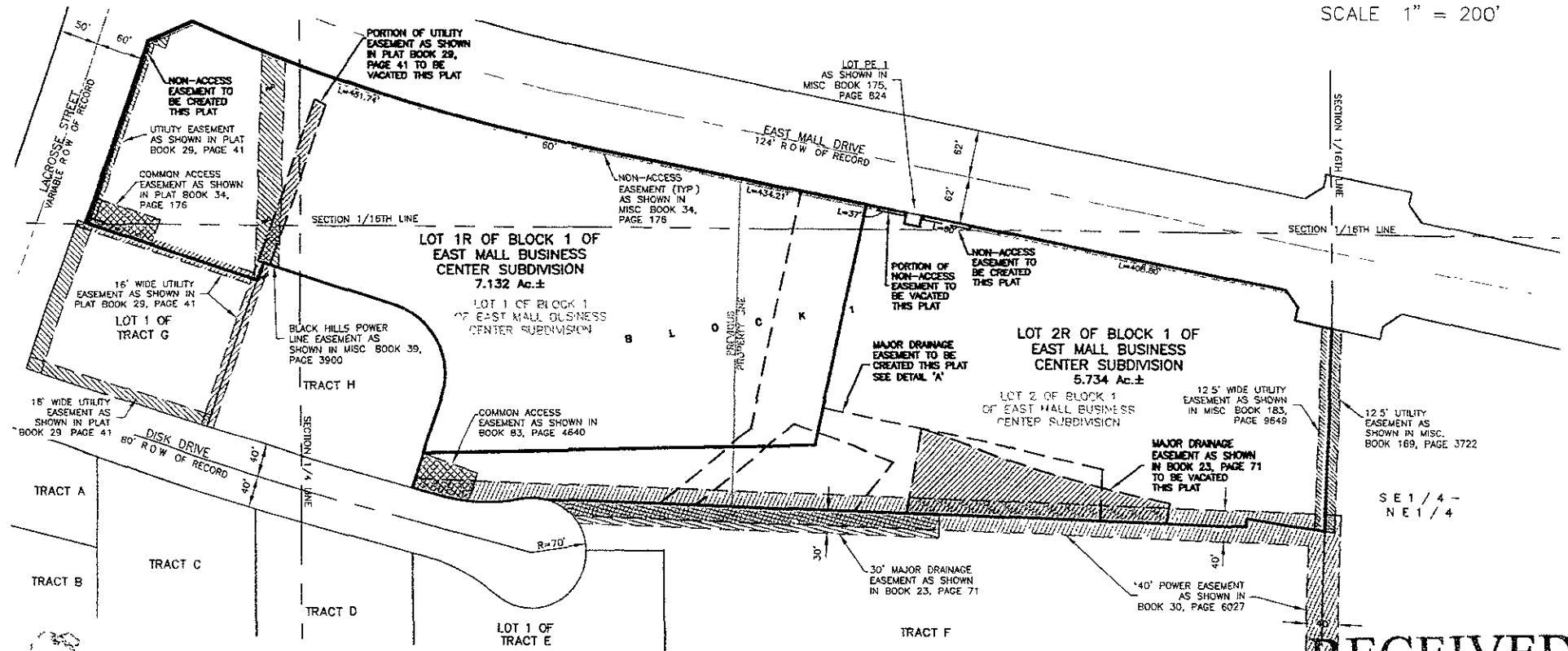
(formerly the Balance of Lots 1 and 2 of Block 1 of East Mall Business Center Subdivision)

LOCATED IN THE W1/2 OF THE NE1/4 & THE E1/2 OF THE NW1/4, SECTION 30, T2N, R8E, BHM  
RAPID CITY, PENNINGTON COUNTY, SOUTH DAKOTA



FEBRUARY 8, 2010

SCALE 1" = 200'



**RENNER & ASSOCIATES, LLC.**

616 SIXTH ST. \* RAPID CITY, SD 57701  
PHONE: 605/721-7310 FAX: 605/721-7313  
SPEARFISH OFFICE: 605/717-0016

**RECEIVED**

FEB - 8 2010

Rapid City Growth

Management Department