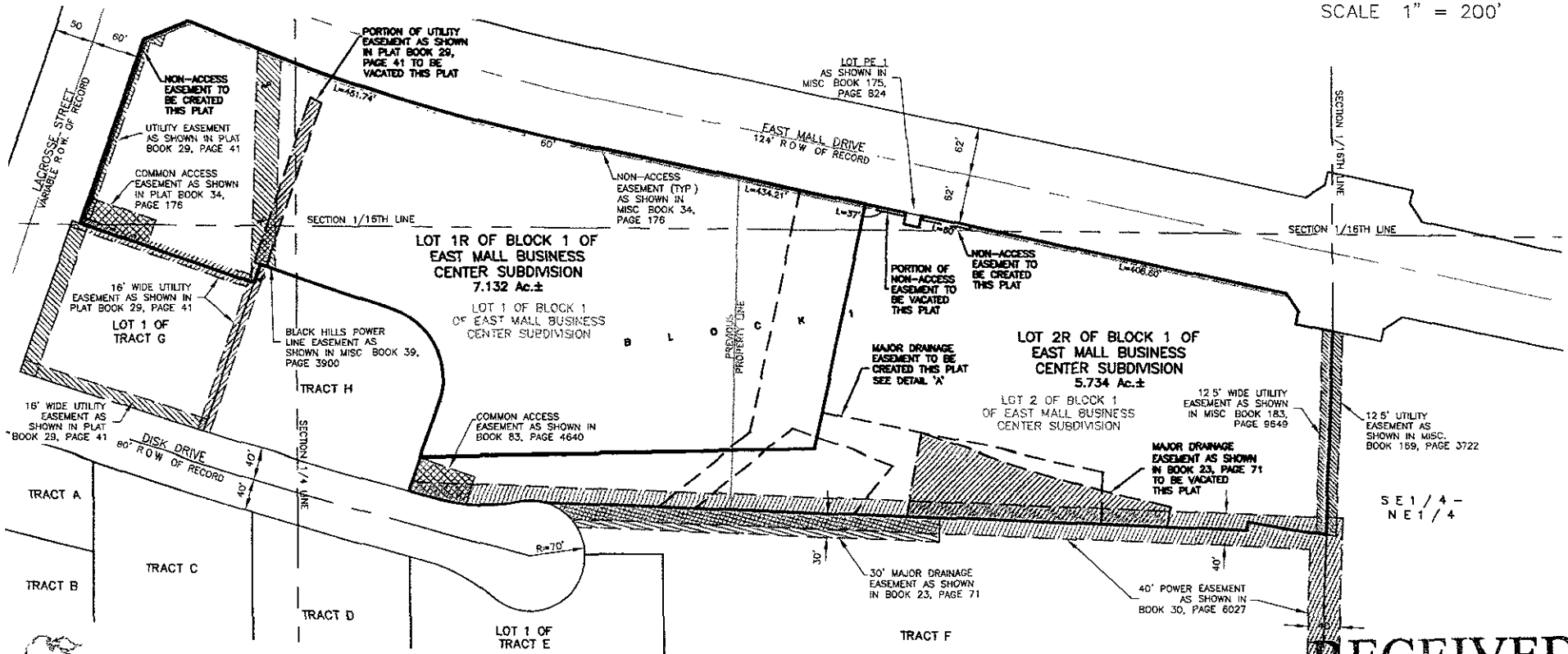
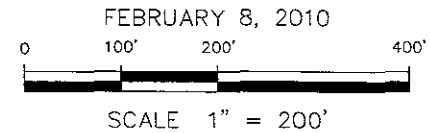


LOTS 1R & 2R OF BLOCK 1 OF EAST MALL BUSINESS CENTER SUBDIVISION

(formerly the Balance of Lots 1 and 2 of Block 1 of East Mall Business Center Subdivision)

LOCATED IN THE W1/2 OF THE NE1/4 & THE E1/2 OF THE NW1/4, SECTION 30, T2N, R8E, BHM
RAPID CITY, PENNINGTON COUNTY, SOUTH DAKOTA



RENNER & ASSOCIATES, LLC.

616 SIXTH ST. * RAPID CITY, SD 57701
PHONE: 605/721-7310 FAX: 605/721-7313
SPEARFISH OFFICE: 605/717-0016

CITY HALL 1903

RECEIVED

FEB - 8 2010

Rapid City Growth Management Department