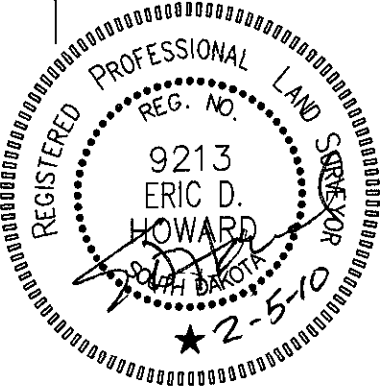
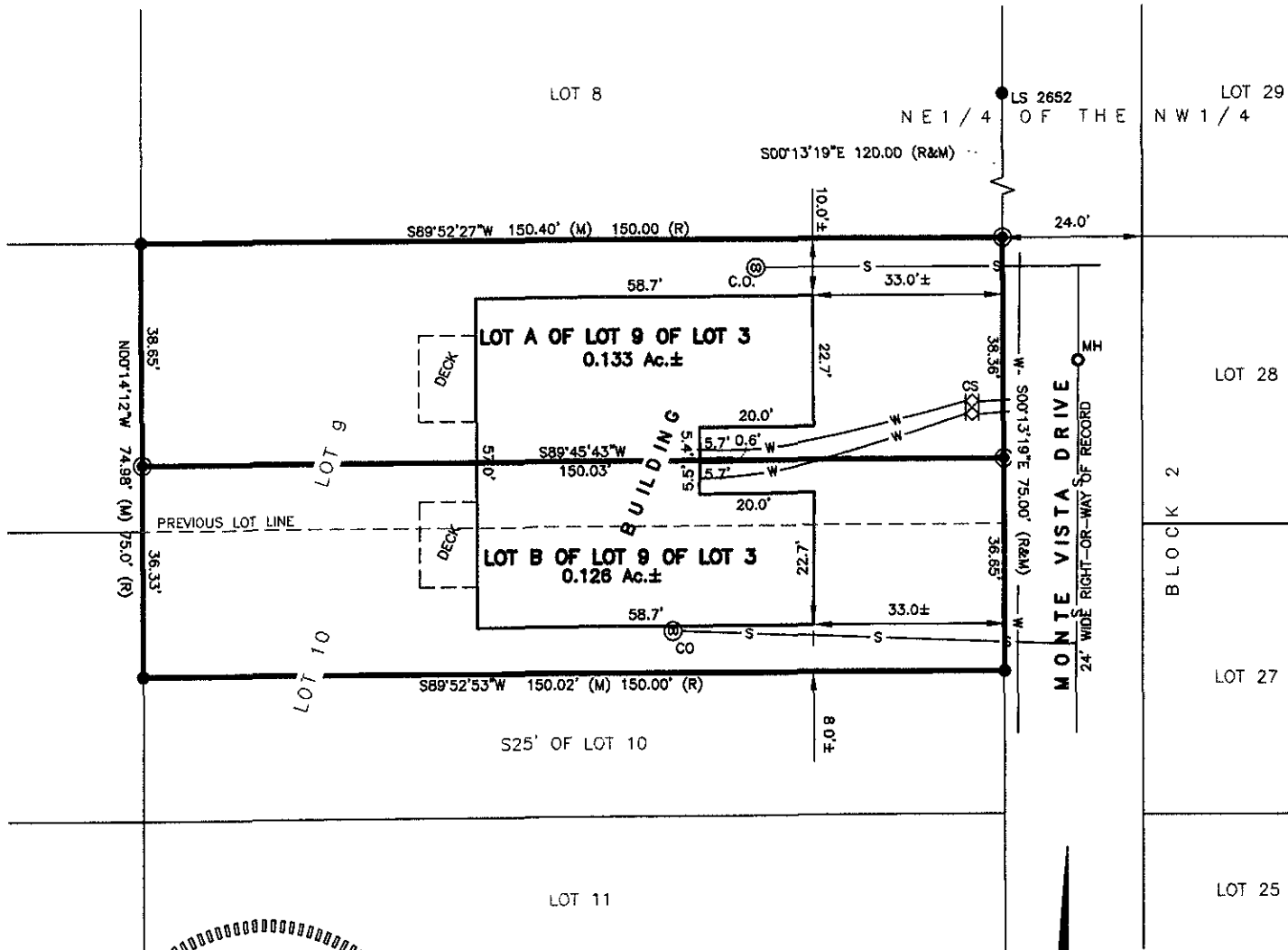


STRUCTURAL SITE LAYOUT

LOTS A AND B OF LOT 9 OF LOT 3 OF, NE1/4 OF THE NW1/4

(formerly Lot 9 and N25' of Lot 10 of Lot 3 of NE1/4 of the NW1/4 Section 9, T1N, R7E)

LOCATED IN THE NE1/4 OF THE NW1/4, SECTION 9, T1N, R7E, BHM RAPID CITY, PENNINGTON COUNTY, SOUTH DAKOTA



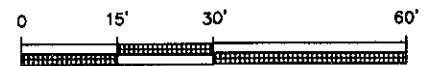
RECEIVED

FEB - 5 2010

Rapid City Growth Management Department



FEBRUARY 7, 2010



SCALE 1" = 30'



CITY HALL 1903

Renner & Associates, LLC.

616 Sixth St. * Rapid City, SD 57701 * 605/721-7310
 FAX: 605/721-7313 * E-MAIL: Gary@RennerAssoc.com
 * Spearfish 605/717-0016 *