

SEE SHEET L-2

SEE SHEET L-3

SEE SHEET L-4

SEE SHEET L-5

RECEIVED

FEB - 5 2010

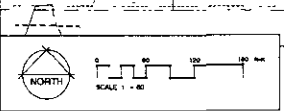
Rapid City Growth Management Department

NOTES

- REFER TO SITE SPECIFICATION SHEET FOR ADDITIONAL REQUIREMENTS
- SEE SHEET L-4 FOR PLANT SCHEDULE
- BASED ON SITE AREA & 50% SO FOOTING
- IF THERE ARE LANDSCAPE POINTS ARE REQUIRED ADDITIONAL LANDSCAPE POINTS ARE PROVIDED

01	EVERGREEN TREES	40,000
02	LARGE TREES	24,000
03	MEDIUM TREES	30,000
04	SMALL TREES	22,000
05	SHRUBS	40,000
06	SP. OF MICROCOVER	40,000

MAINTAIN MAINTENANCE HEIGHT OF 30' AT ALL LIGHT TRAVEL AREAS



MASTER PLANTING PLAN

REVISIONS

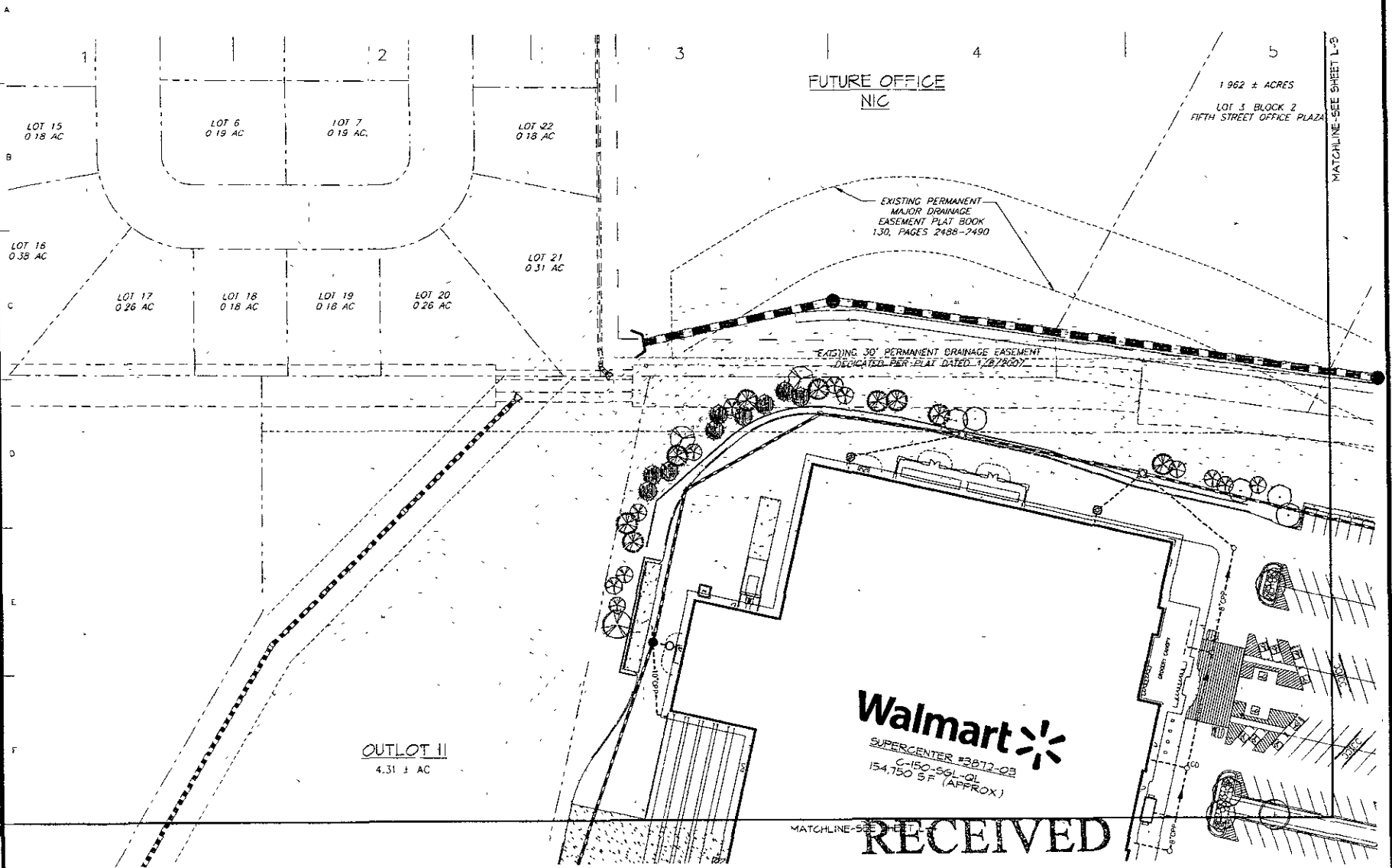
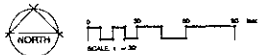
NO.	DATE	BY

landscape TECHNOLOGIES
 1000 S. GARDEN DRIVE
 SUITE 100
 RAPID CITY, SOUTH DAKOTA 57701
 TEL: 605.342.2222
 FAX: 605.342.2222

PRELIMINARY PLANTING PLAN FOR THE PROPOSED
Walmart #3872-03
 RAPID CITY, SOUTH DAKOTA

DATE: 02/05/10
 DRAWN BY: J. H. HARRIS
 CHECKED BY: J. H. HARRIS
 SCALE: 1" = 80'
 SHEET: L-1

10PD011



REVISIONS	BY

LandScape TECHNOLOGIES
 404 S. 13th St. Rapid City, SD 57701
 Phone: 605.343.1333
 Fax: 605.343.1335

PRELIMINARY PLANTING PLAN FOR THE PROPOSED
Walmart #3872-03
 RAPID CITY, SOUTH DAKOTA

DATE	
BY	
CHECKED	
REVISION	
DATE	
BY	
CHECKED	
REVISION	
DATE	
BY	
CHECKED	
REVISION	
DATE	
BY	
CHECKED	
REVISION	
DATE	
BY	
CHECKED	
REVISION	

RECEIVED

FEB - 5 2010

Rapid City Growth Management Department



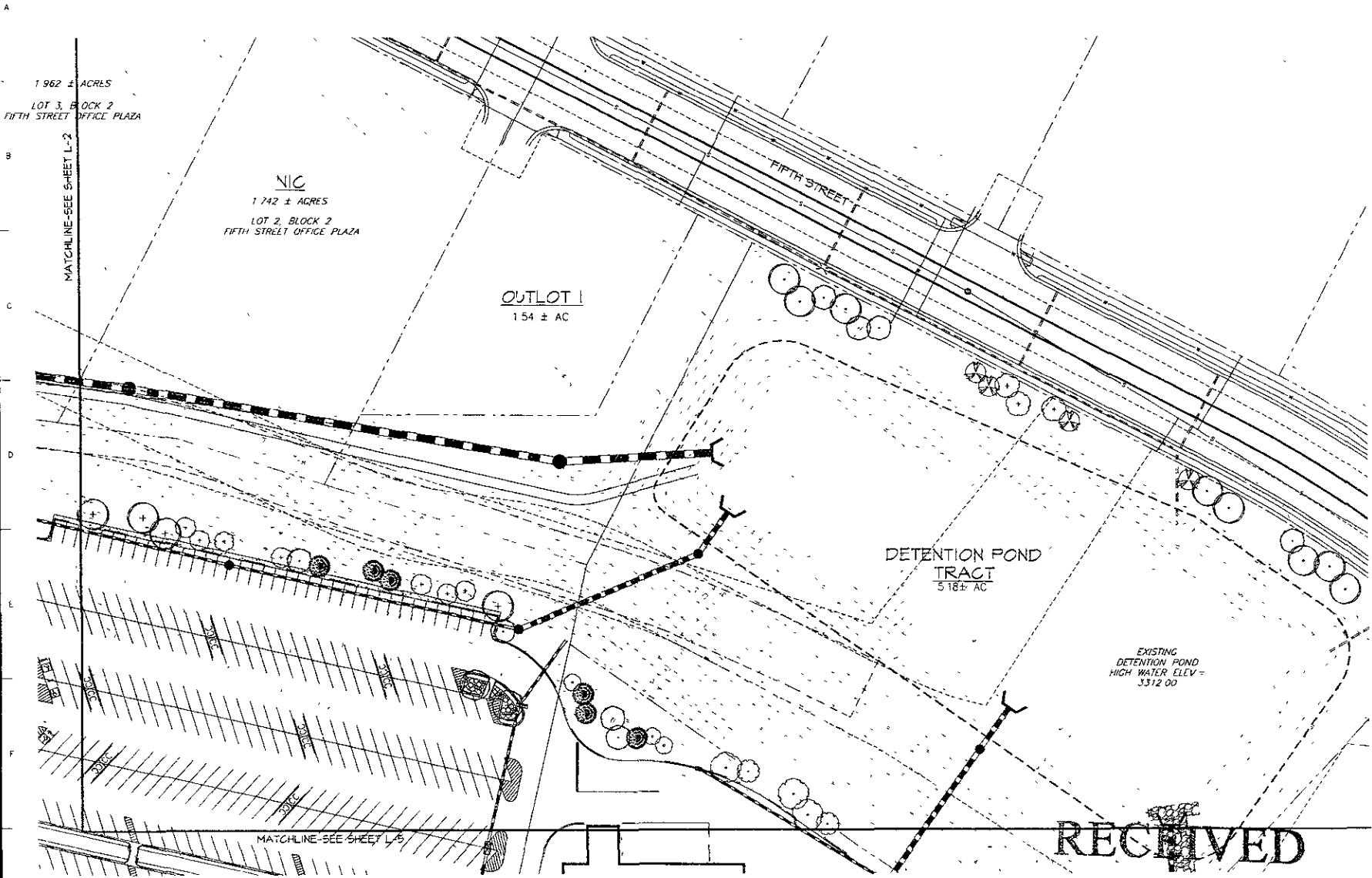
1.962 ± ACRES
LOT 3, BLOCK 2
FIFTH STREET OFFICE PLAZA

NIC
1.742 ± ACRES
LOT 2, BLOCK 2
FIFTH STREET OFFICE PLAZA

OUTLOT I
1.54 ± AC

DETENTION POND
TRACT
5.18 ± AC

EXISTING
DETENTION POND
HIGH WATER ELEV =
3312.00



RECEIVED

FEB - 5 2010

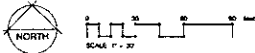
Rapid City Growth
Management Department

REVISIONS	BY

landscape
TECHNOLOGIES
P.O. Box 1080
Rapid City, SD 57702
Tel: (605) 342-2800
Fax: (605) 342-2800

PRELIMINARY PLANTING PLAN FOR THE PROPOSED
WalMart #3872-03
RAPID CITY, SOUTH DAKOTA

DATE: 02/05/10
SCALE: 1/8" = 1'-0"
SHEET: L-3
OF 54 SHEETS



10PD011

MATCHLINE-SEE SHEET L-2

Walmart*
SUPERCENTER #3872-03
C-150-56L-QL
154,750 S.F. (APPROX.)

SEASONAL GARDEN CENTER
TRUCK AREA

OUTLOT 12
2.34 ± AC

OUTLOT 13
1.22 ± AC

BLACK HILLS BOULEVARD

RECEIVED

OUTLOT 10
2.53 ± AC

FEB - 5 2010

Rapid City Growth Management Department

OUTLOT 9
1.87 ± AC

OUTLOT 8
1.36 ± AC

OUTLOT 7
1.27 ± AC

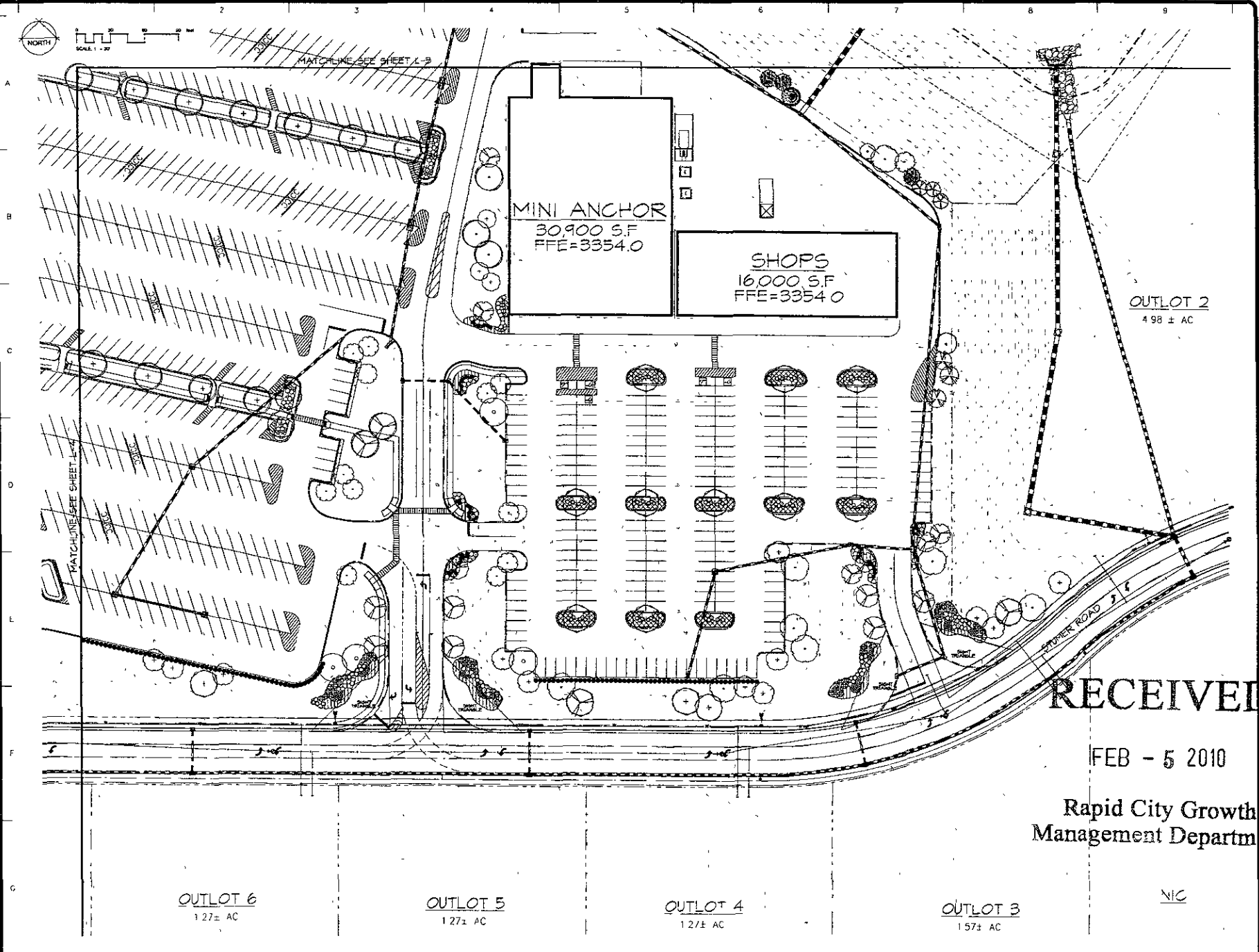
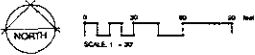
REVISIONS	BY

PRELIMINARY PLANTING PLAN FOR THE PROPOSED
Walmart #3872-03
 RAPID CITY, SOUTH DAKOTA

landscape
TECHNOLOGIES
 1530 433 2ND
 ST. JOHNS, MINN. 55125
 P. 651.433.4666

DATE: 02/05/10
 DRAWN: JLS
 CHECKED: JLS
 SCALE: AS SHOWN
 SHEET NO: 14
 OF 36 SHEETS

L-4



MINI ANCHOR
30,900 S.F.
FFE=3354.0

SHOPS
16,000 S.F.
FFE=3354.0

OUTLOT 2
4.98 ± AC

OUTLOT 6
1.27 ± AC

OUTLOT 5
1.27 ± AC

OUTLOT 4
1.27 ± AC

OUTLOT 3
1.57 ± AC

NIC

RECEIVED

FEB - 5 2010

Rapid City Growth
Management Department

REVISIONS	BY

Landscape
TECHNOLOGIES
P.O. BOX 1000
RAPID CITY, SD 57702
TEL: 605/342-1200

PRELIMINARY PLANTING PLAN FOR THE PROPOSED
Walmart #3872-03
RAPID CITY, SOUTH DAKOTA

DRAWN	
CHECKED	
DATE	
SCALE	
SHEET	
L-5	