

EXHIBIT  
OF  
AMMENDMENT TO THE PRD  
FOR LOT 16 OF ROCKINON RANCH ESTATES  
LOCATED IN THE N 1/2 OF THE NE 1/4 OF THE SE 1/4  
OF SECTION 23, T2N, R7E, BHM  
RAPID CITY, PENNINGTON COUNTY, SOUTH DAKOTA

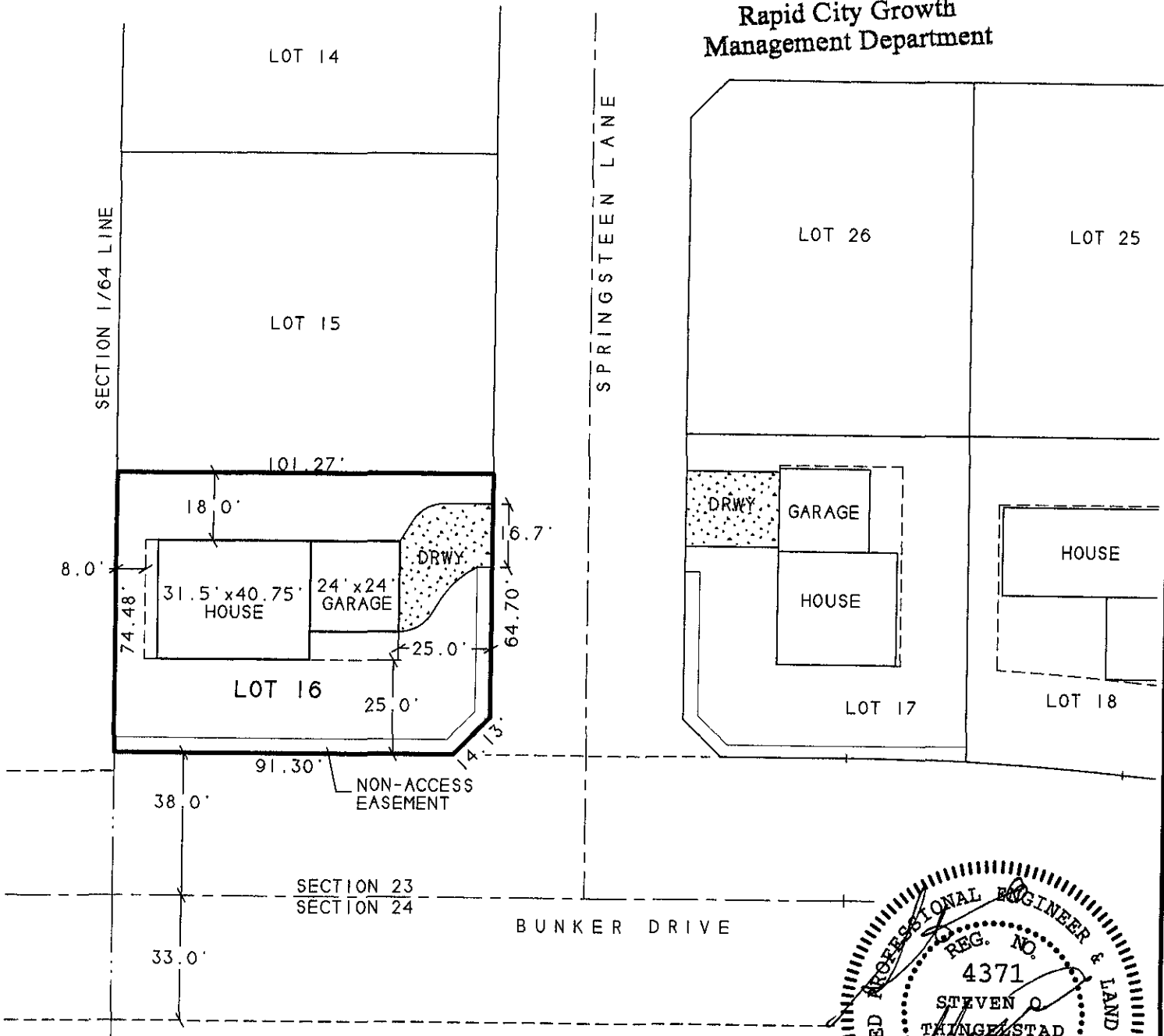


RECEIVED

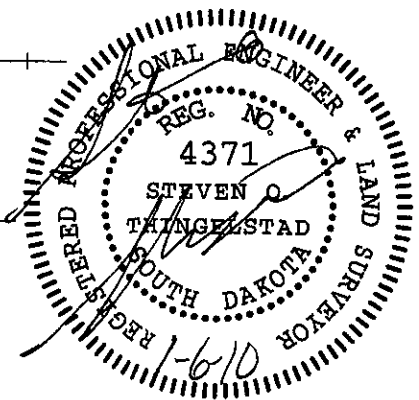
SCALE: 1" = 40'  
JANUARY 4, 2010

JAN 13 2010

Rapid City Growth  
Management Department



LATE  
SUBMITTAL



PREPARED BY: STEVEN O. THINGELSTAD  
BRITTON ENGINEERING & LAND SURVEYING, INC.  
8035 BLACK HAWK ROAD, SUITE 5,  
BLACK HAWK, SOUTH DAKOTA 57718  
TELEPHONE: (605) 716-7988