



Rapid City Solid Waste Management Plan

January 2010

HDR | ONE COMPANY
Many Solutions SM

Rapid City Solid Waste Management Plan

- Developed on EPA Planning Hierarchy
 - Source Reduction
 - Recycling
 - Combustion
 - Landfilling
- Builds on the 1992 Plan
- Summary of Planning Efforts for the 2010 Plan
 - Additional FTE “Source Reduction Coordinator”
 - Mandatory Recycling Service Option
 - Waste to Energy
 - Citizen Campus
 - Financial Implications

Source Reduction Coordinator

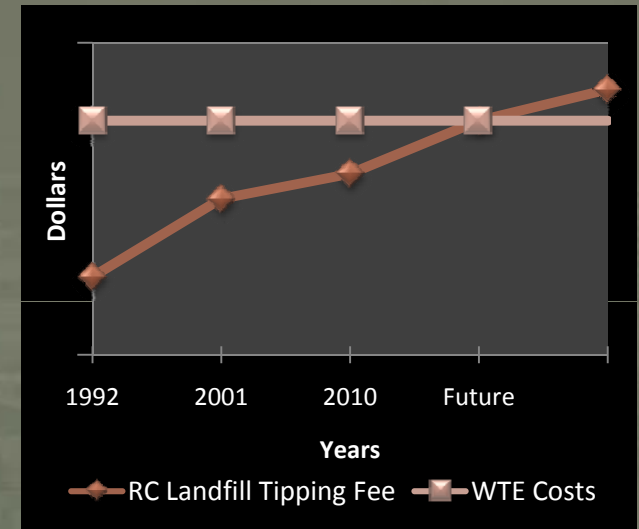
- Drive Recycling Program Expansion
 - Public Education – Citizen Comment
 - Wet/Dry Pilot Recycling Program
 - Compost Marketing
 - Reuse Center Development
- Special Waste
 - Develop Electronic Recycling Program
 - Manage Household Hazardous Waste Program

Mandatory Recycling Service Option

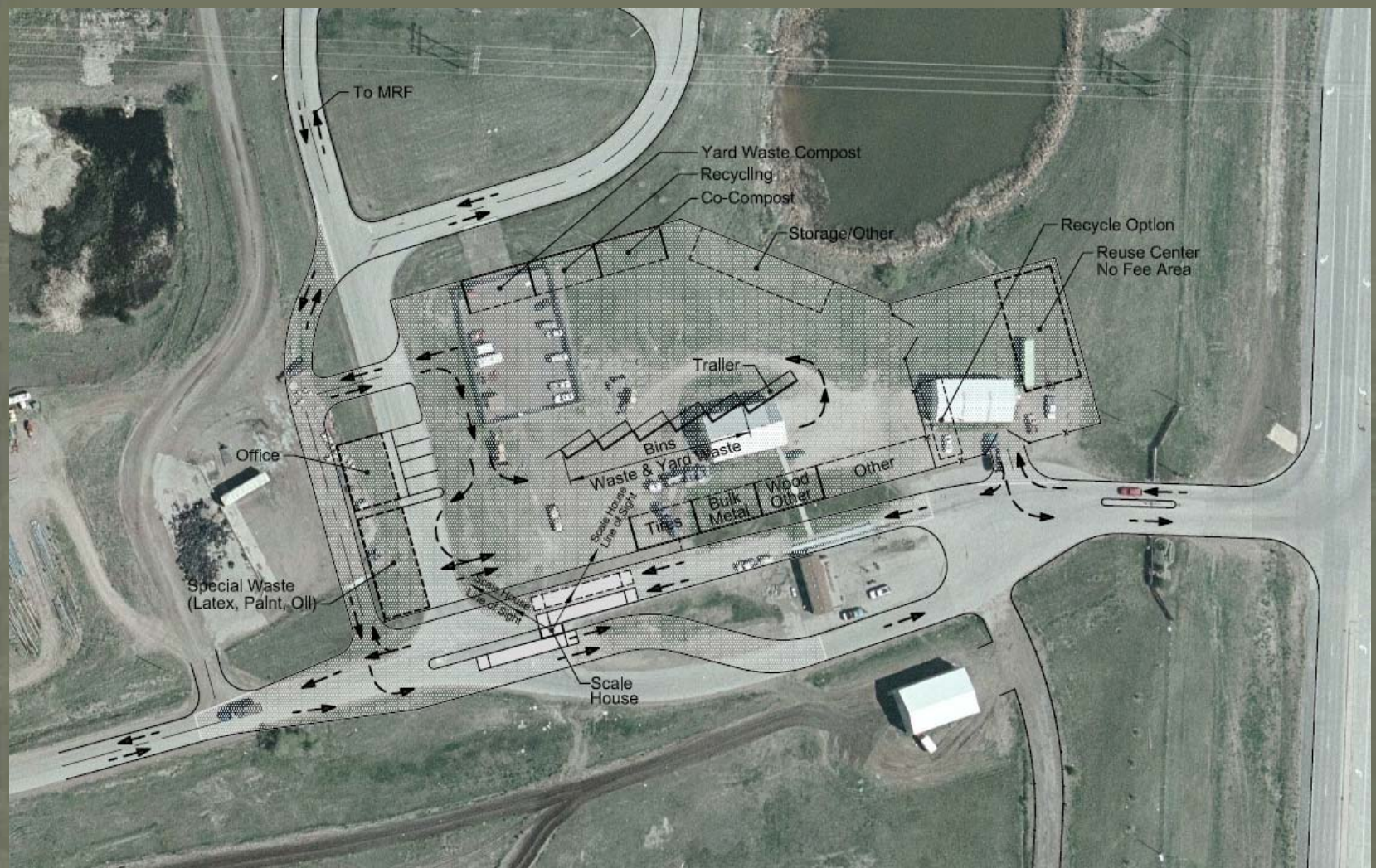
- This Program Would Require all Permitted Haulers that Utilize the Solid Waste Complex to Provide Recycling
 - Voluntary for Customers
 - Requires Ordinance Revision
- Make the Service Available to All that Want It
- Further Implement “Pay as you Throw” Program
- Put to work an “Underutilized Asset” – the MRF

Waste to Energy

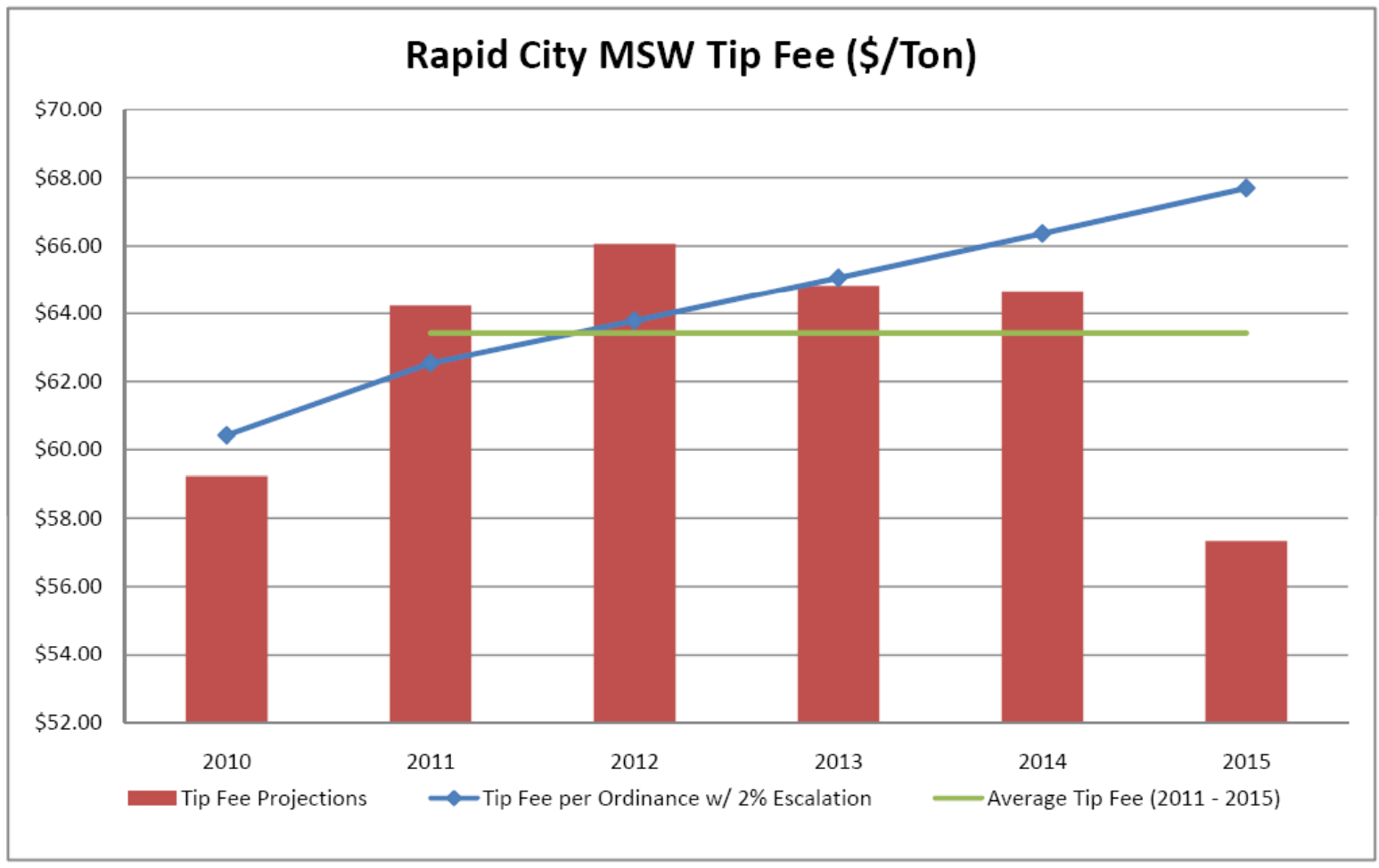
- Evaluation Focused on Proven Technologies
 - Mass Burn
 - Refuse Derived Fuel (RDF)
 - Others
- Current Constraints
 - Drive Tipping Fee in Excess of \$100 per ton
- Next Steps
 - Monitor Current Legislation
 - Seek Partnerships with Utilities
- Focus Efforts on Landfill Gas Opportunities
- Long-term: Monitor the Opportunity



Citizen Campus



Financial Stability



Site life in excess of 100 years utilizing current practices



Questions?

Thank you for the opportunity

HDR | ONE COMPANY
Many Solutions SM