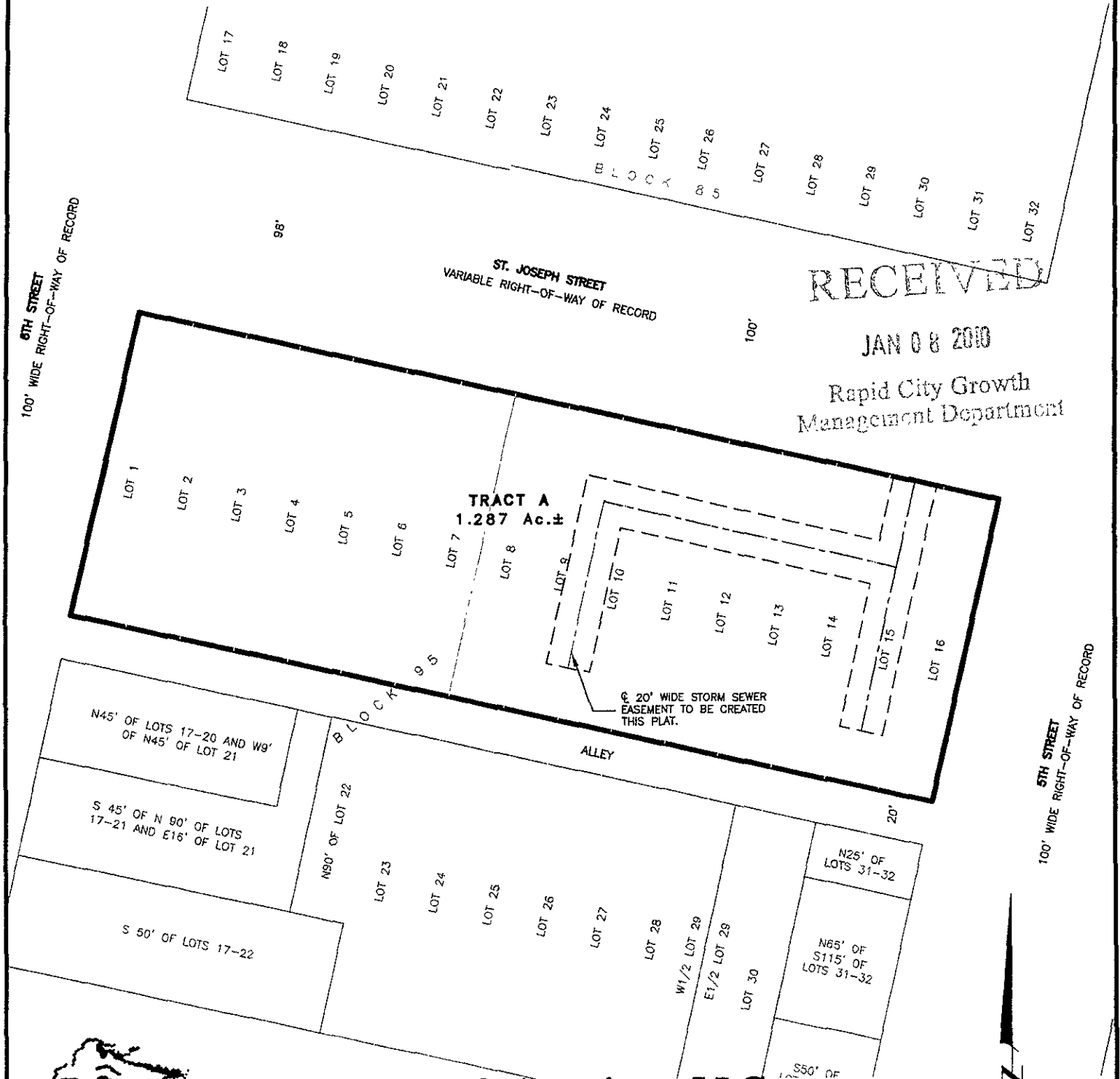


10SV001

PLAT OF  
**TRACT A OF BLOCK 95**  
**ORIGINAL TOWN OF RAPID CITY**

(formerly Lots 1 thru 16 of Block 95, Original Town of Rapid City)

LOCATED IN THE N1/2 OF THE NW1/4,  
SECTION 1, T1N, R7E, BHM  
RAPID CITY, PENNINGTON COUNTY, SOUTH DAKOTA



CITY HALL 1903

**Renner & Associates, LLC.**

616 Sixth St. \* Rapid City, SD 57701 \* 605/721-7310  
FAX: 605/721-7313 \* E-MAIL: Gary@RennerAssoc.com  
\* Spearfish 605/717-0016 \*

N.T.S.