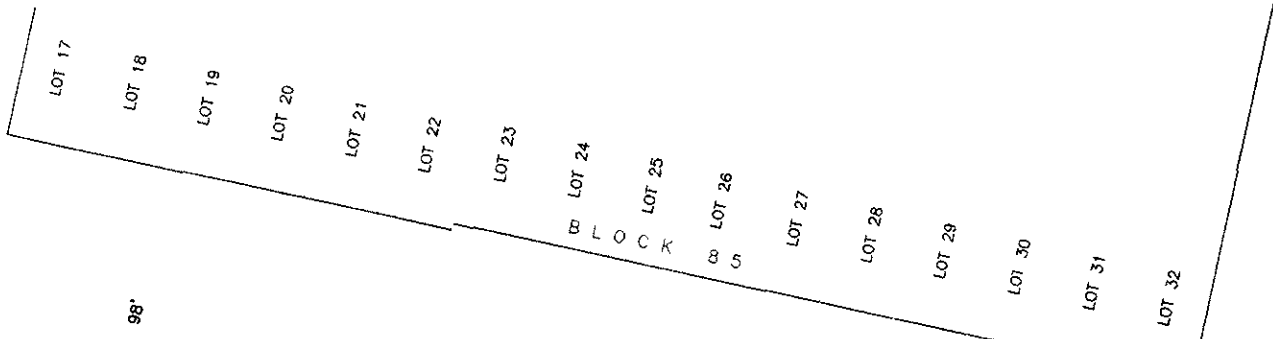


PLAT OF
TRACT A OF BLOCK 95
ORIGINAL TOWN OF RAPID CITY

(formerly Lots 1 thru 16 of Block 95, Original Town of Rapid City)
LOCATED IN THE N1/2 OF THE NW1/4,
SECTION 1, T1N, R7E, BHM
RAPID CITY, PENNINGTON COUNTY, SOUTH DAKOTA



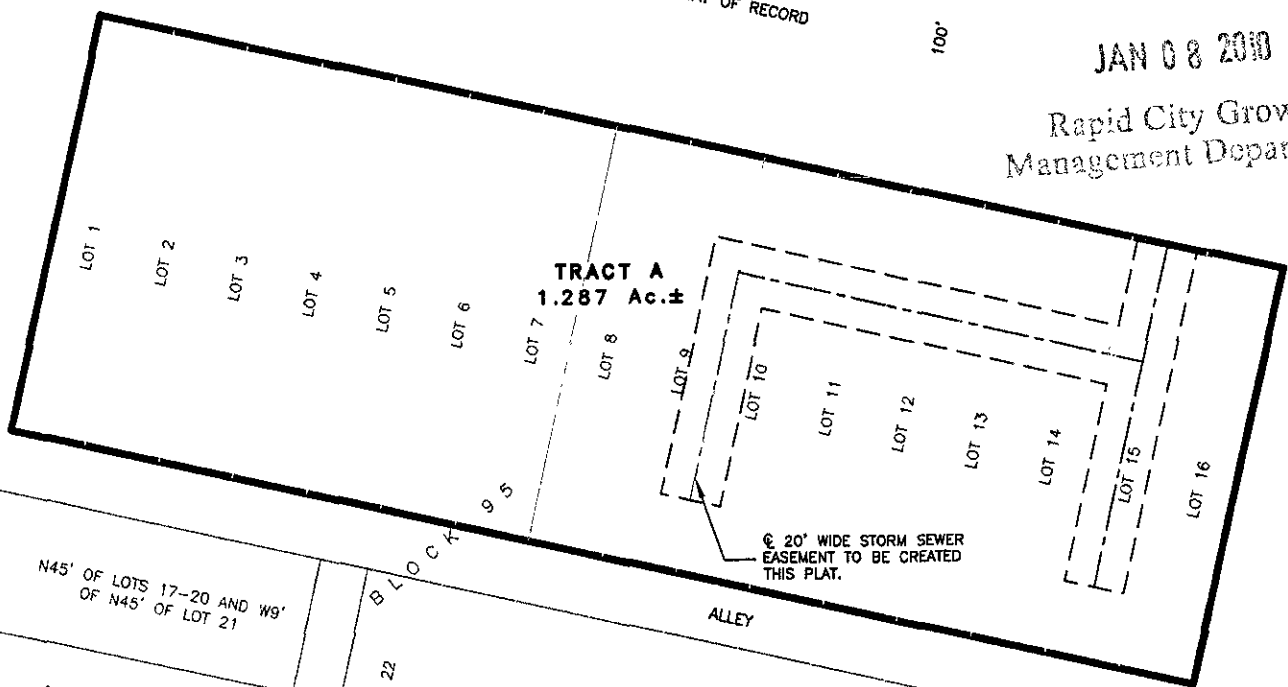
6TH STREET
100' WIDE RIGHT-OF-WAY OF RECORD

ST. JOSEPH STREET
VARIABLE RIGHT-OF-WAY OF RECORD

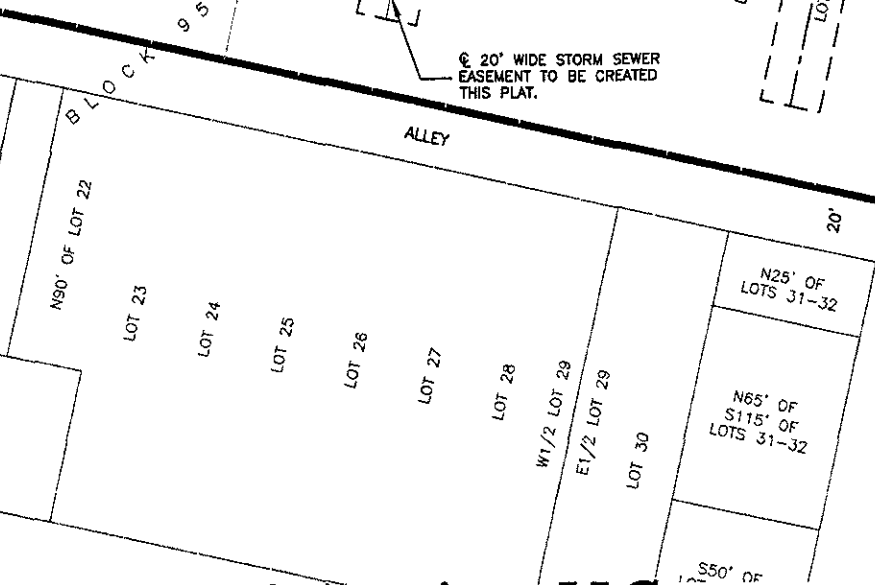
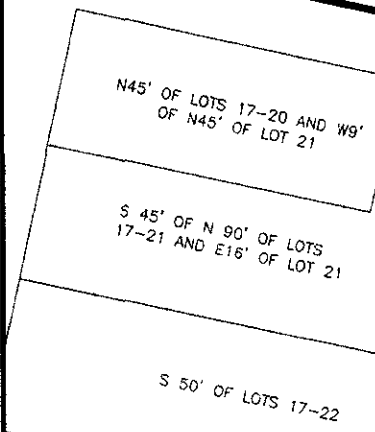
RECEIVED

JAN 08 2010

Rapid City Growth
Management Department



© 20' WIDE STORM SEWER
EASEMENT TO BE CREATED
THIS PLAT.



5TH STREET
100' WIDE RIGHT-OF-WAY OF RECORD



CITY HALL 1903

Renner & Associates, LLC.

616 Sixth St. * Rapid City, SD 57701 * 605/721-7310
FAX: 605/721-7313 * E-MAIL: Gary@RennerAssoc.com
* Spearfish 605/717-0016 *



N.T.S.