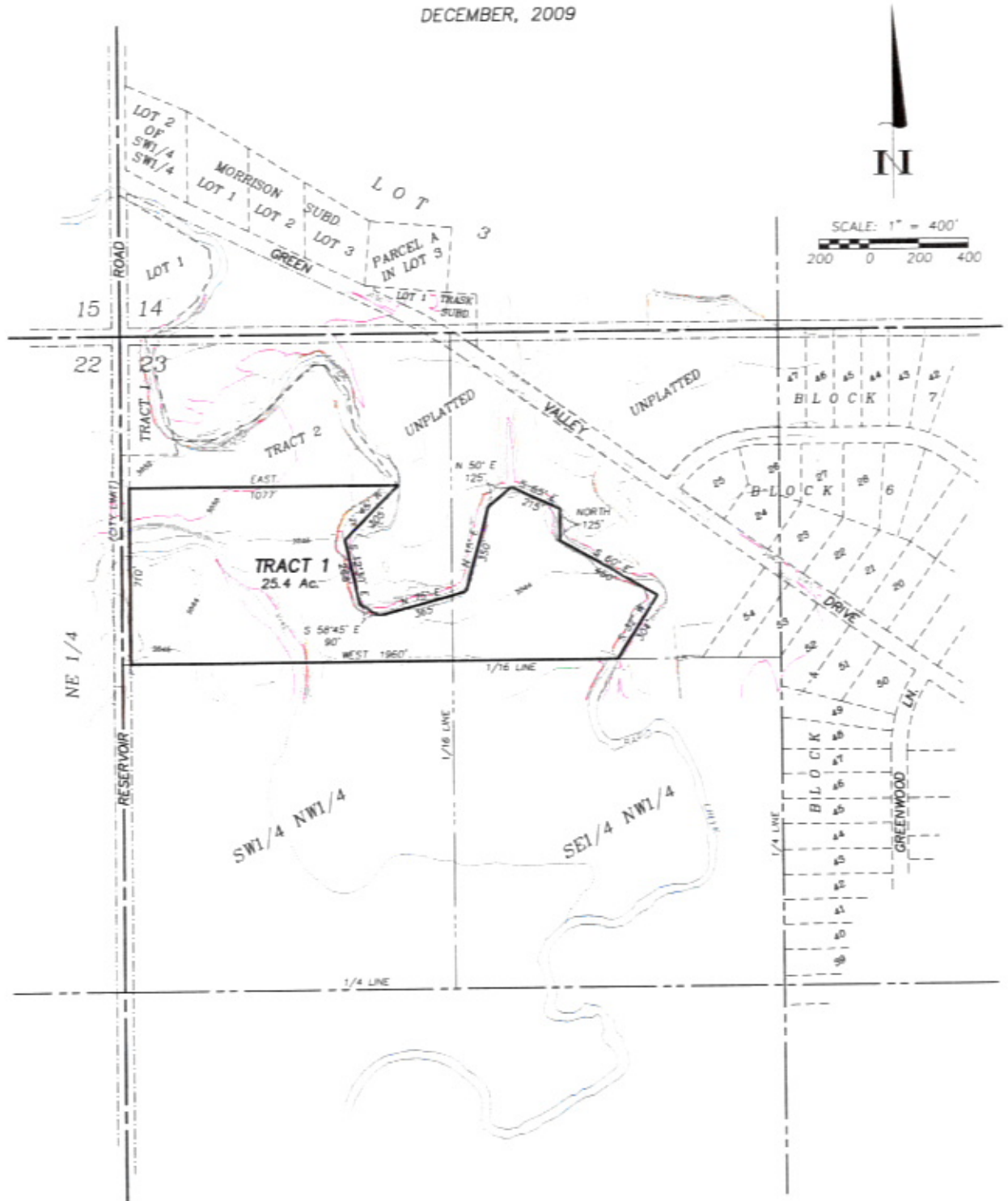


LAYOUT PLAT OF  
 TRACT 1 OF DAIL SUBDIVISION,  
 LOCATED IN THE N1/2 NW1/4 OF SECTION 23,  
 TOWNSHIP 1 NORTH, RANGE 8 EAST OF THE BLACK HILLS MERIDIAN  
 PENNINGTON COUNTY, SOUTH DAKOTA.

DECEMBER, 2009



RECEIVED

JAN 1 2010

Rapid City  
Map Service

PREPARED BY:



**D.C. Scott**  
 SURVEYORS, INC.  
 3153 ANDERSON ROAD  
 RAPID CITY, SD 57703  
 (605) 393-2400