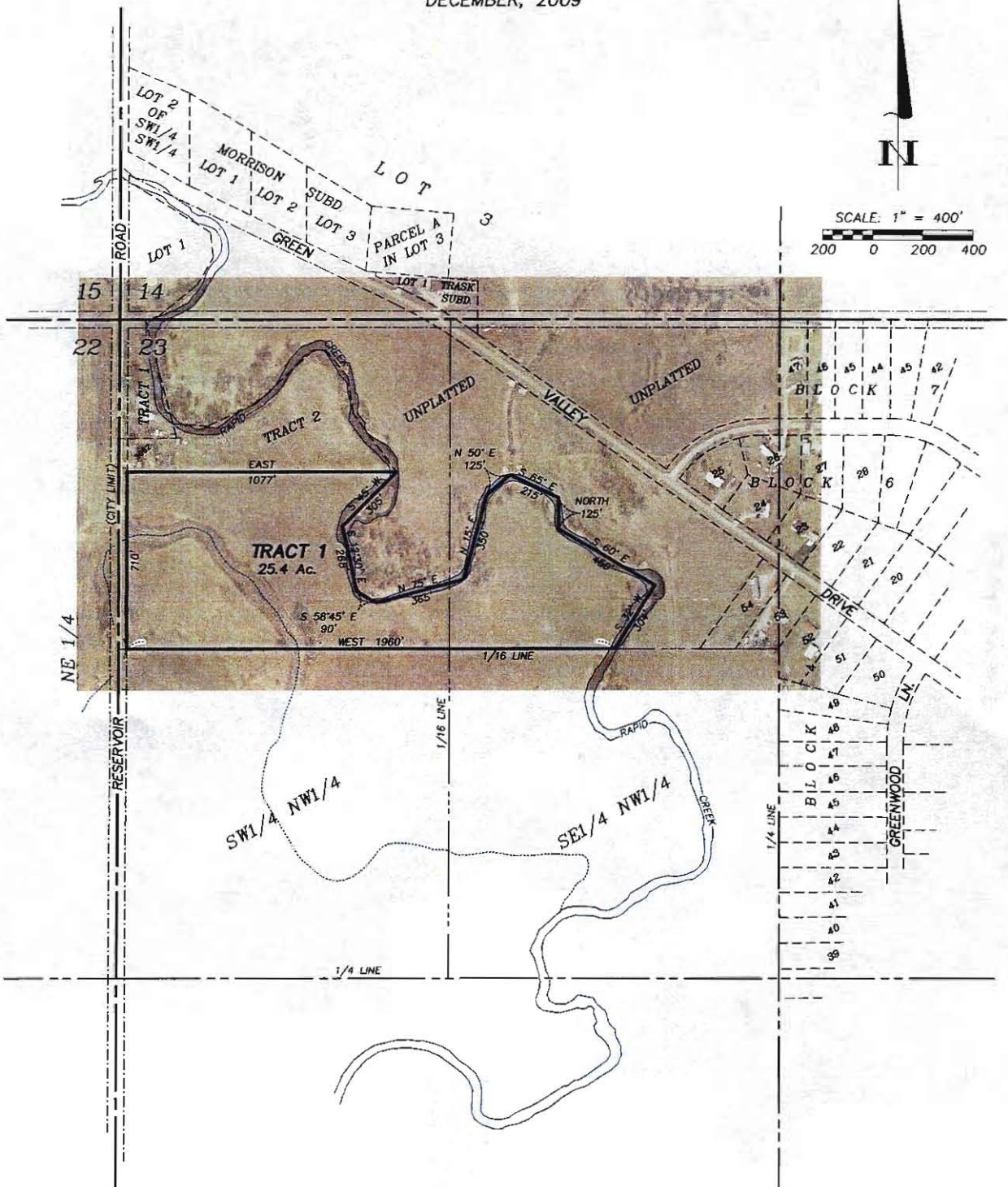


LAYOUT PLAT OF
TRACT 1 OF DAIL SUBDIVISION,
LOCATED IN THE N1/2 NW1/4 OF SECTION 23,
TOWNSHIP 1 NORTH, RANGE 8 EAST OF THE BLACK HILLS MERIDIAN
PENNINGTON COUNTY, SOUTH DAKOTA.

DECEMBER, 2009



RECEIVED

JAN 08 2010

Rapid City Growth
Management Department

PREPARED BY:



D.C. Scott
SURVEYORS, INC.
3153 ANDERSON ROAD
RAPID CITY, SD 57703
(605) 393-2400