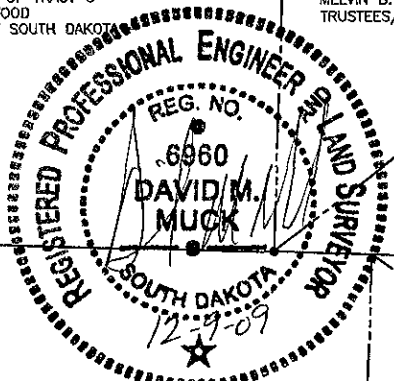
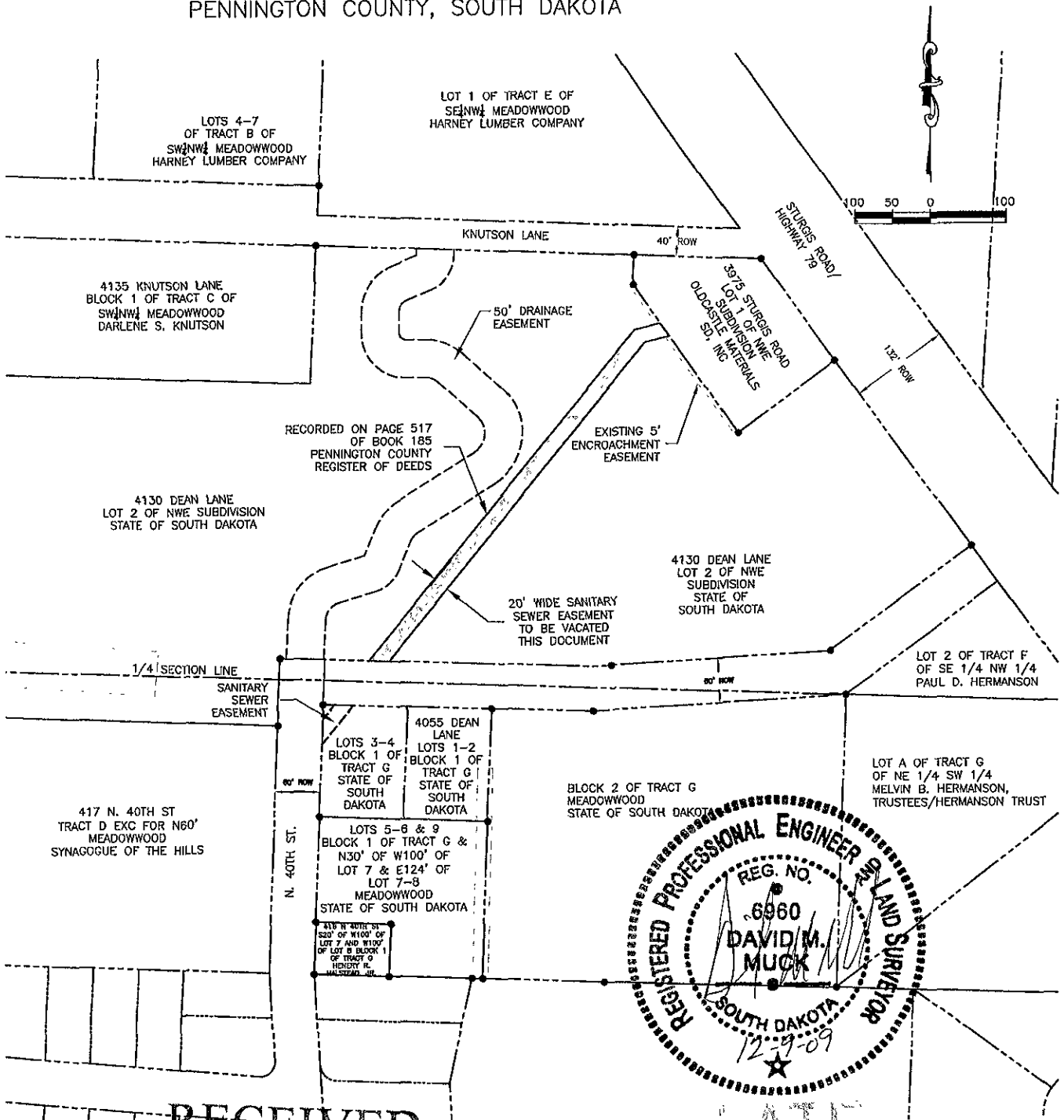


SHOWING A TRACT OF LAND TO BE VACATED
 IN A PORTION OF SECTION 33,
 TOWNSHIP 2 NORTH - RANGE 7 EAST
 OF THE BHM RAPID CITY,
 PENNINGTON COUNTY, SOUTH DAKOTA

LEGEND

- FOUND SURVEY MONUMENT
- EASEMENT TO BE VACATED THIS PLAT.



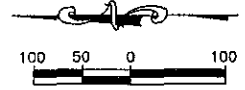
RECEIVED

LATE

EXHIBIT SUBMITTAL

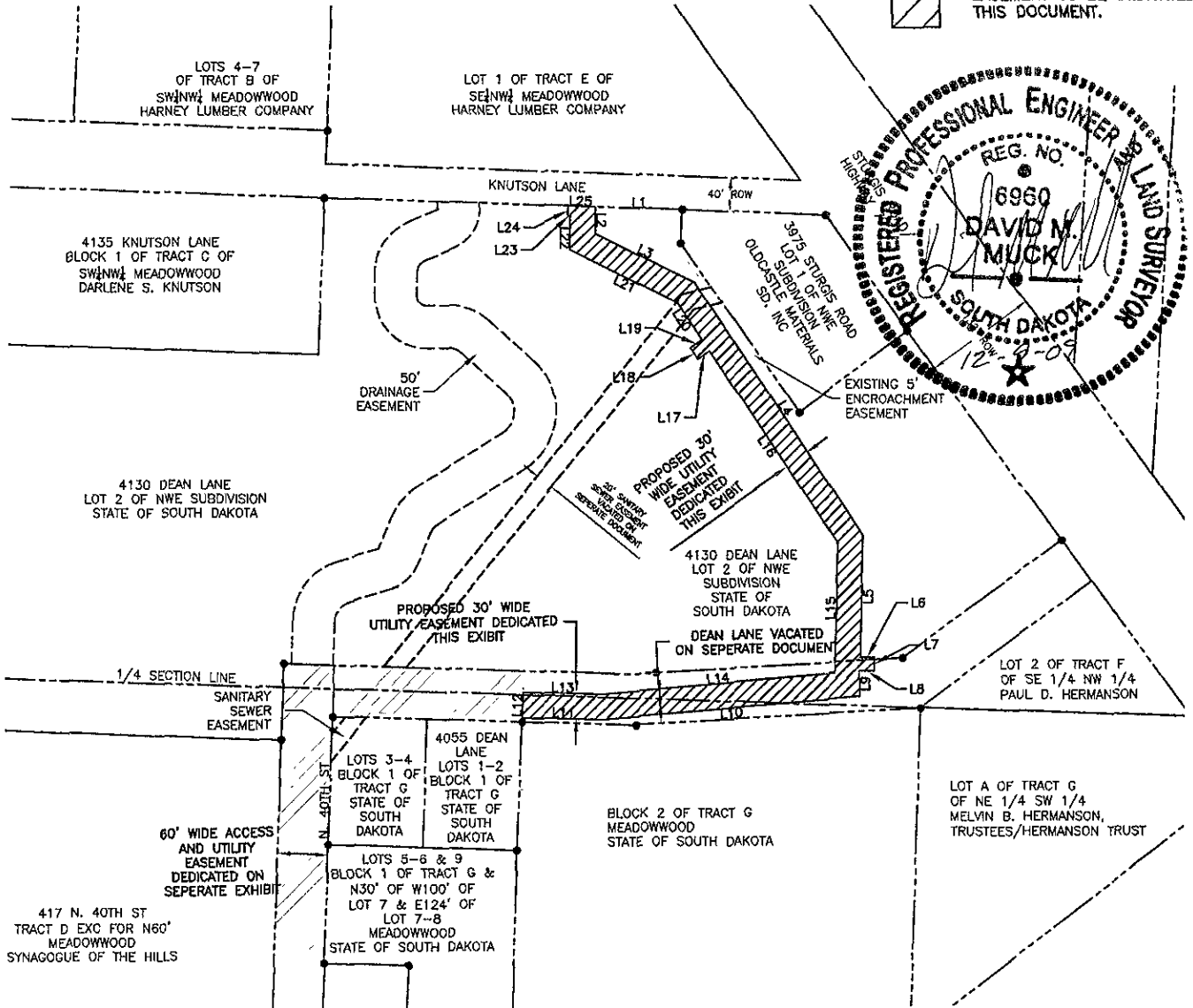
09VE018

SHOWING AN UTILITY EASEMENT TO BE DEDICATED IN A PORTION OF SECTION 33, TOWNSHIP 2 NORTH - RANGE 7 EAST OF THE BHM RAPID CITY, PENNINGTON COUNTY, SOUTH DAKOTA



LEGEND

- FOUND SURVEY MONUMENT
- ▨ EASEMENT TO BE DEDICATED THIS DOCUMENT.



| NUMBER | DIRECTION | DISTANCE |
|--------|-------------|----------|
| L1 | S87°49'57"E | 102.80' |
| L2 | N00°06'39"W | 32.07' |
| L3 | N63°50'06"W | 130.96' |
| L4 | N33°51'39"W | 359.28' |
| L5 | N01°26'00"E | 143.72' |
| L6 | S89°51'17"W | 16.69' |
| L7 | N01°26'00"E | 16.01' |
| L8 | N89°51'17"E | 16.69' |
| L9 | N01°26'00"E | 29.50' |
| L10 | N84°57'11"E | 305.37' |
| L11 | S88°02'17"E | 95.72' |

| NUMBER | DIRECTION | DISTANCE |
|--------|-------------|----------|
| L12 | S01°59'51"W | 30.00' |
| L13 | N88°02'17"W | 93.86' |
| L14 | S84°57'11"W | 276.75' |
| L15 | S01°26'00"W | 152.90' |
| L16 | S33°51'39"E | 273.08' |
| L17 | N56°08'21"E | 16.50' |
| L18 | S33°51'39"E | 16.00' |
| L19 | S56°08'21"W | 16.50' |
| L20 | S33°51'39"E | 52.62' |
| L21 | S63°50'06"E | 141.58' |
| L22 | S00°06'39"E | 40.05' |

| NUMBER | DIRECTION | DISTANCE |
|--------|-------------|----------|
| L23 | N89°53'21"E | 2.95' |
| L24 | S00°06'39"E | 11.86' |
| L25 | N88°02'11"W | 32.98' |

11-13-09 P:\09-110\AutoCAD\Easements\SEWER EASEMENT DEDICATION.dwg