

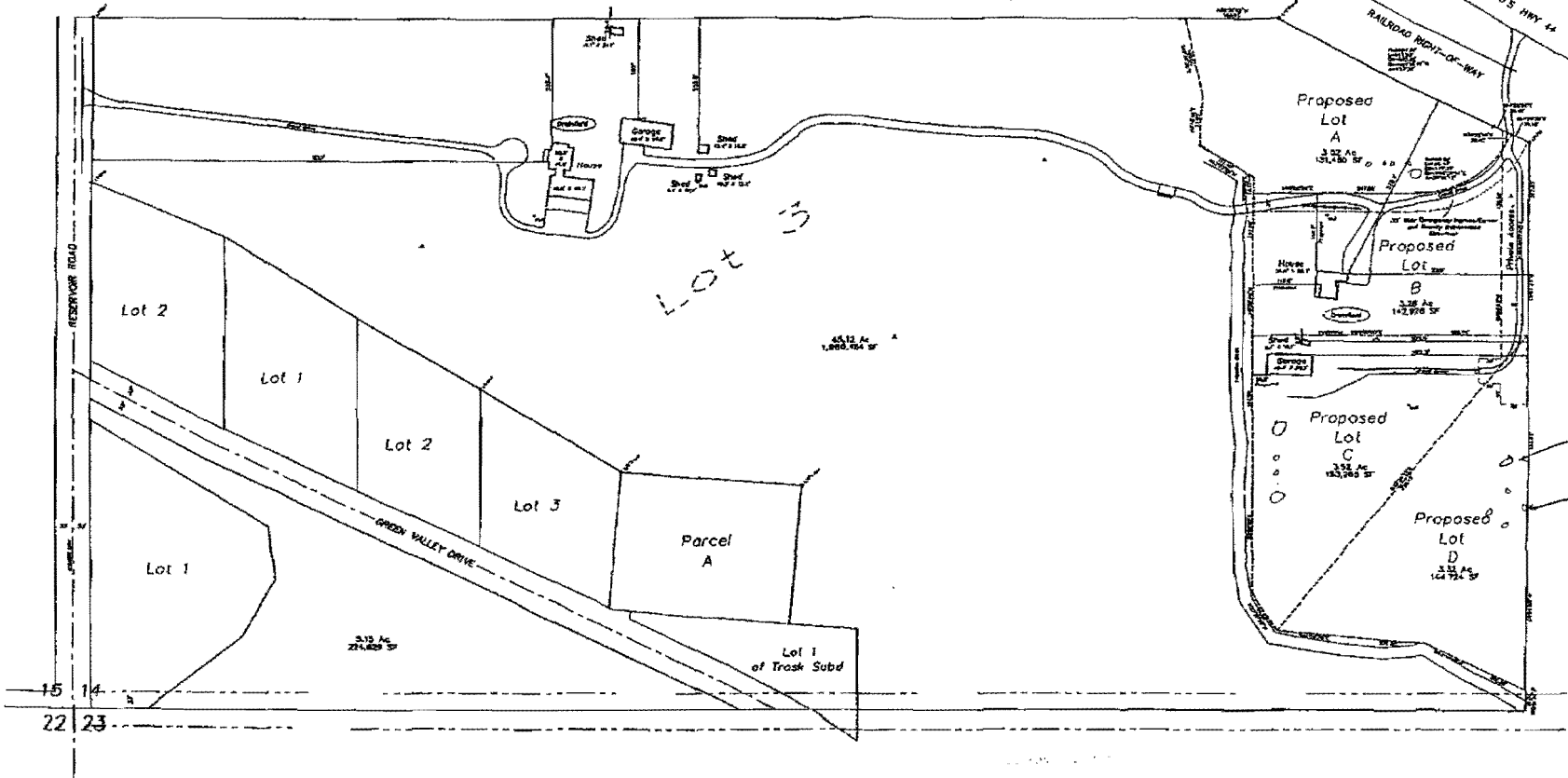
RECEIVED
 SEP 25 2009
 Rapid City Growth
 Management Department

PRELIMINARY

1" = 100'
 January 22, 2008
 Revised February 11, 2008

LEGEND
 ○ - Utility Pole
 ○ - Utility Pedestals

Fisk Land Surveying &
 Consulting Engineers, Inc.
 1022 Mich. Street - P.O. Box 8894
 Rapid City, SD 57708
 (605) 348-2342 (Fax) (605) 348-2111 (Cell)
 fskland.com



private (line)
 public (line)

Any information herein is for informational purposes only and should not be used for any other purpose without the express written consent of the engineer.

Proposed Platting
 Balance of Lot 3 in the S1/2 SW1/4
 Section 14, T1N, R8E, B.H.M.
 Pennington County, South Dakota

Surveyed by	RLV
Date	1/2/08
Drawn by	RBE
Date	2/11/08
Checked by	RBE
Revisions	2/1/08
	3/13/08

Project No.
 08-08-21

Layout