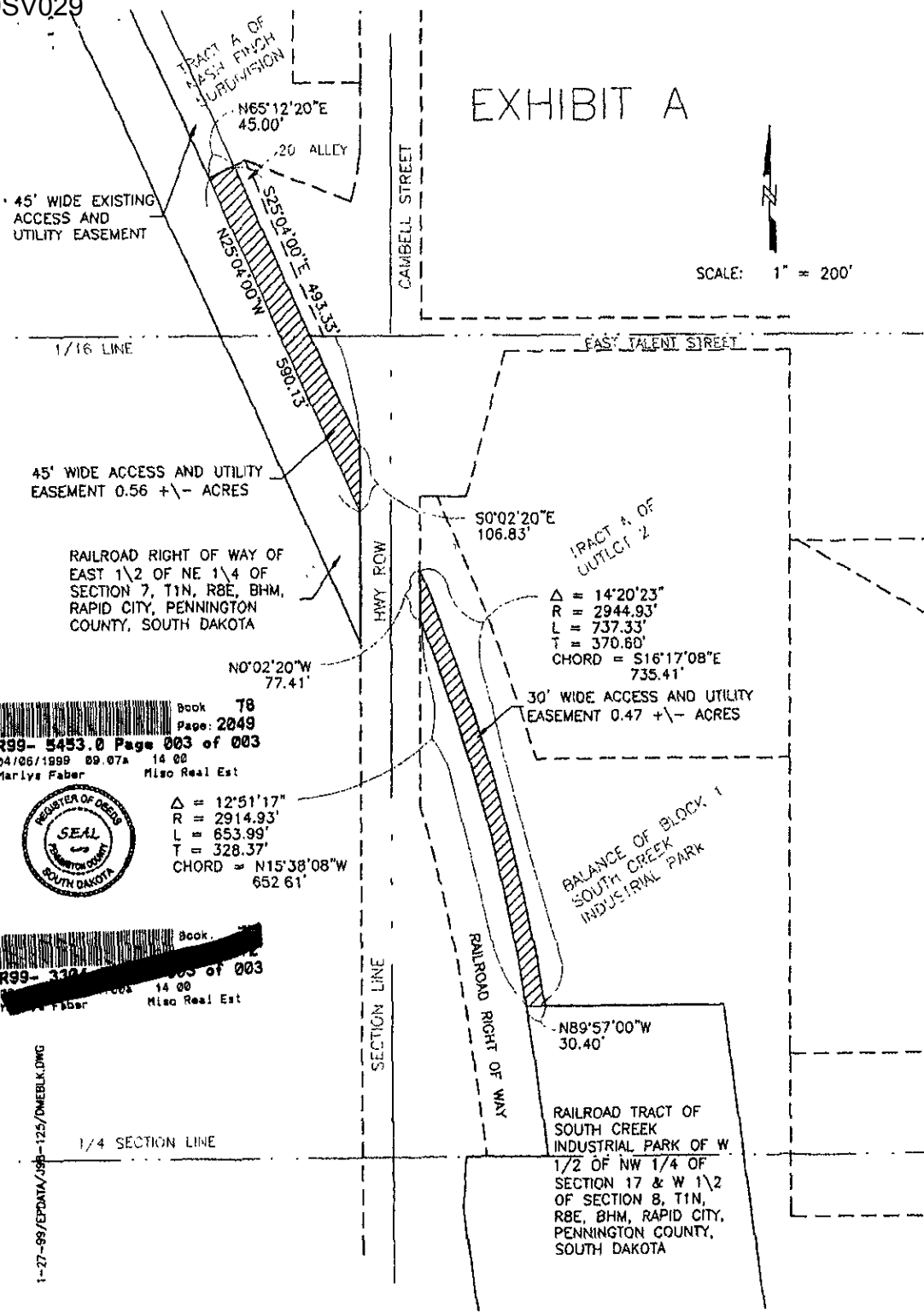
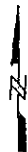


EXHIBIT A

SCALE: 1" = 200'



TRACT A OF
NASH FINCH
JURISDICTION

N65°12'20"E
45.00'

20' ALLEY

S25°04'00"E 493.33'
N25°04'00"W 590.13'

45' WIDE EXISTING
ACCESS AND
UTILITY EASEMENT

CAMBELL STREET

EAST TALENT STREET

1/16 LINE

45' WIDE ACCESS AND UTILITY
EASEMENT 0.56 +/- ACRES

RAILROAD RIGHT OF WAY OF
EAST 1/2 OF NE 1/4 OF
SECTION 7, T1N, R8E, BHM,
RAPID CITY, PENNINGTON
COUNTY, SOUTH DAKOTA

S0°02'20"E
106.83'

TRACT A OF
WULFERT

Δ = 14°20'23"
R = 2944.93'
L = 737.33'
T = 370.60'
CHORD = S16°17'08"E
735.41'

N0°02'20"W
77.41'

30' WIDE ACCESS AND UTILITY
EASEMENT 0.47 +/- ACRES

Book 78
Page: 2049
R99- 5453.0 Page 003 of 003
04/06/1999 09.07x 14 00
Marlyse Faber Misc Real Est



Δ = 12°51'17"
R = 2914.93'
L = 653.99'
T = 328.37'
CHORD = N15°38'08"W
652.61'

BALANCE OF BLOCK 1
SOUTH CREEK
INDUSTRIAL PARK

Book [REDACTED]
Page [REDACTED] of 003
04/06/1999 09.07x 14 00
Marlyse Faber Misc Real Est

RAILROAD RIGHT OF WAY

N89°57'00"W
30.40'

RAILROAD TRACT OF
SOUTH CREEK
INDUSTRIAL PARK OF W
1/2 OF NW 1/4 OF
SECTION 17 & W 1/2
OF SECTION 8, T1N,
R8E, BHM, RAPID CITY,
PENNINGTON COUNTY,
SOUTH DAKOTA

1/4 SECTION LINE