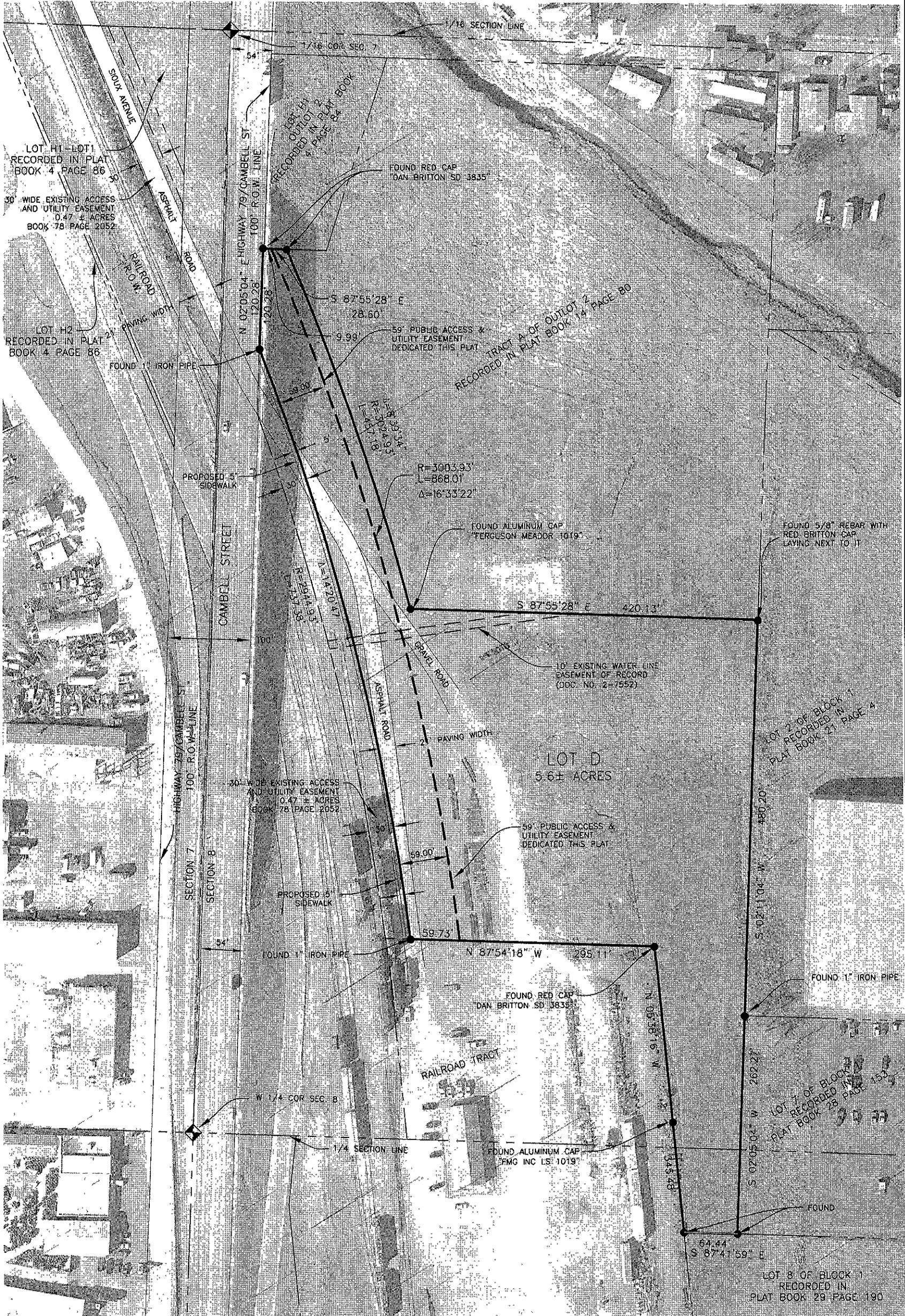


SKETCH PLAT OF LOT D OF BLOCK 1 OF SOUTH CREEK INDUSTRIAL PARK, FORMERLY A PORTION OF BLOCK 1 OF SOUTH CREEK INDUSTRIAL PARK LOCATED IN THE SW1/4NW1/4 AND THE NW1/4SW1/4 OF SECTION 8, T1N, R8E, B.H.M., RAPID CITY, PENNINGTON COUNTY, SOUTH DAKOTA



80 40 0
HORIZ SCALE 1"=80'

RECEIVED

FOR REVIEW ONLY

DEC 29 2009

Rapid City Growth
Management Department

Plat prepared by:

517 7th street rapid city sd 57701
ph 605.342.9470 fax 605.342.2377
www.4front.biz

ARCHITECTURE ENGINEERING
GIS SURVEYING



FOURFRONT
DESIGN INC