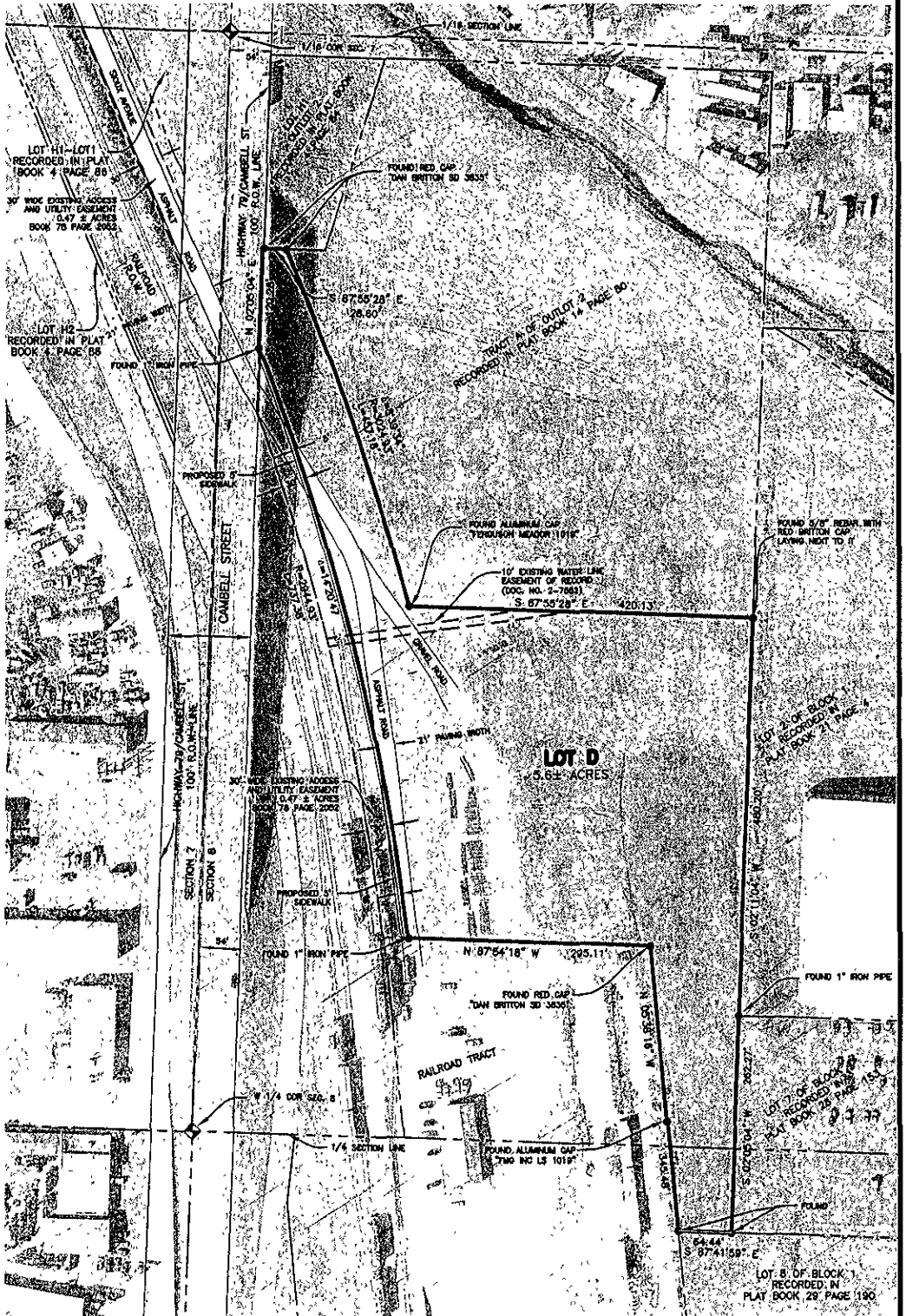
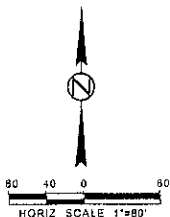


SKETCH PLAT OF LOT D OF BLOCK 1 OF SOUTH CREEK INDUSTRIAL PARK, FORMERLY A PORTION OF BLOCK 1 OF SOUTH CREEK INDUSTRIAL PARK LOCATED IN THE SW1/4NW1/4 AND THE NW1/4SW1/4 OF SECTION 8, T1N, R8E, B.H.M. RAPID CITY, PENNINGTON COUNTY, SOUTH DAKOTA



FOR REVIEW ONLY



Plat prepared by:
 517 7th street rapid city sd 57701
 ph 605 342 9470 fax 605 342 2377
 www 4front.biz

ARCHITECTURE | ENGINEERING
 GIS | SURVEYING

FRONT