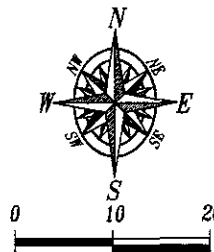


ΕΙÚŠÈ H



1" = 20'
November 17, 2009
Rev. December 29, 2009
Basis of Bearings - Assumed

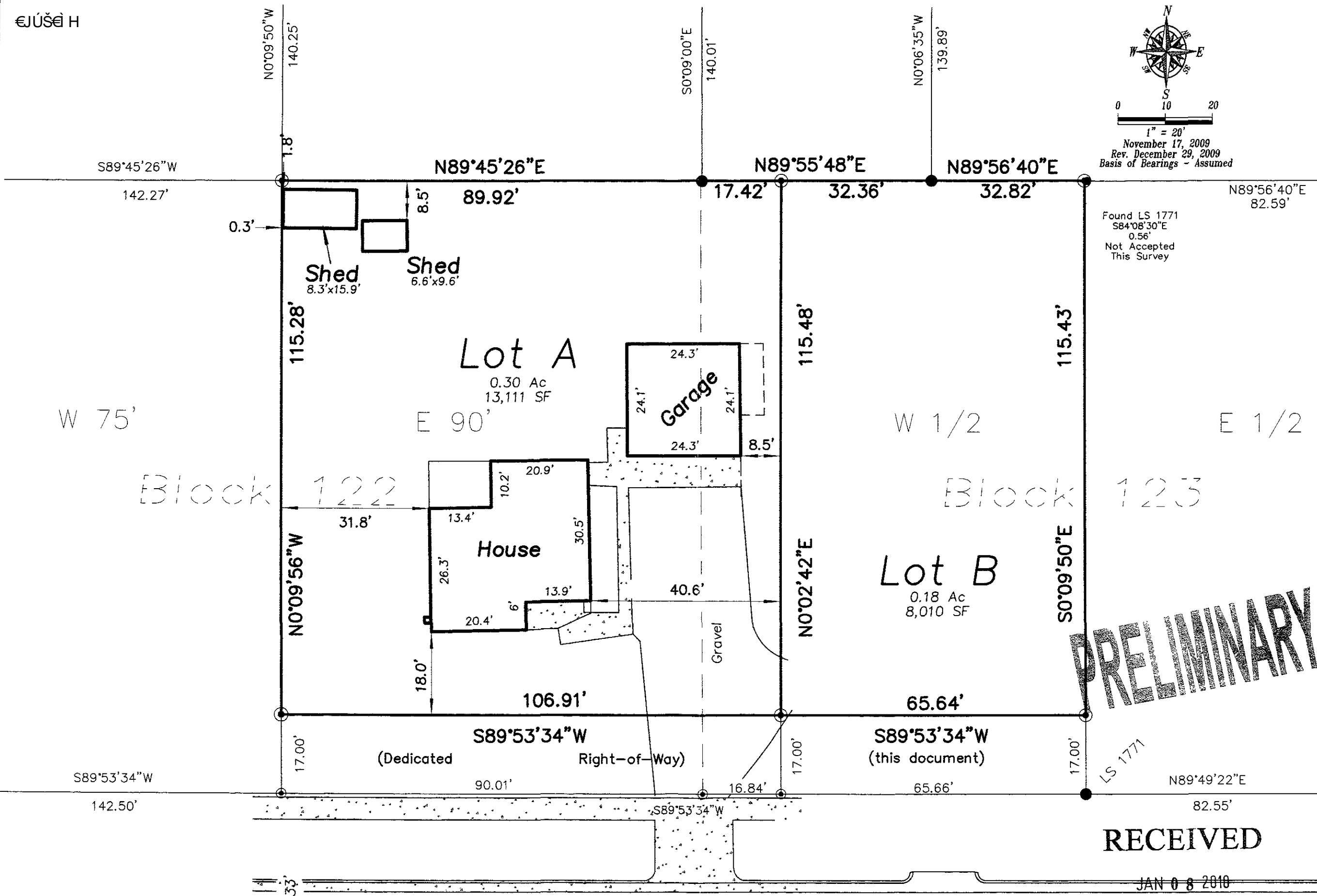
Found LS 1771
S84°08'30"E
0.56'
Not Accepted
This Survey

Fisk Land Surveying
& Consulting
Engineers, Inc.
1022 Main Street (P.O. Box 8154)
Rapid City, South Dakota 57709
(605) 348-1538
(605) 341-1112 (fx)

Site Plan
Lot A and B of
Mahoney Addition No. 2
SE1/4 of Section 25, T2N, R8E, B.H.M.
Rapid City, Pennington County, South Dakota

Surveyed by:
BL, ML
Date
5/1/09
Drawn by:
RWF,BL
Checked by:
JF
Revisions
Dedicated ROW
12/29/09

Site Plan
Map
1
of
1
Project No.
08-03-02



PRELIMINARY

RECEIVED
JAN 08 2010

Rapid City Growth
Management Department

Anamosa Street