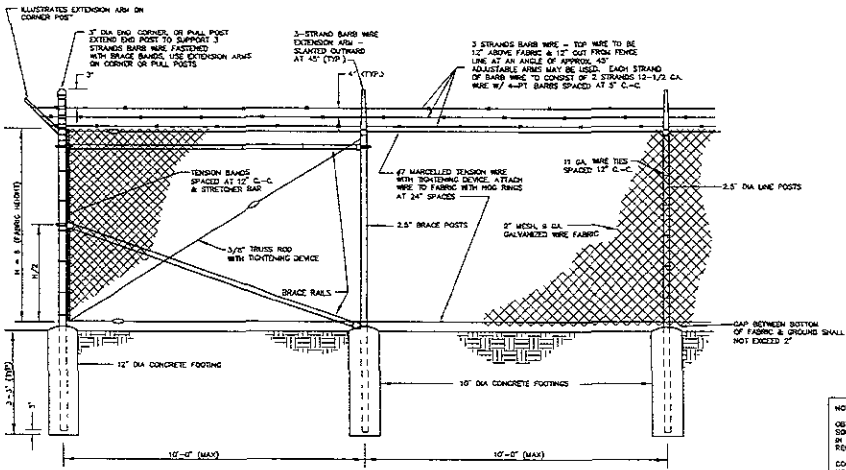


RECEIVED

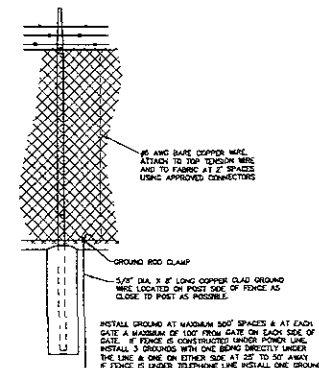
DEC 03 2009

Rapid City Growth Management Department

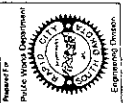


CHAIN LINK FENCE WITH ANTI-CLIMB WIRE & NO TOP RAIL

NOTES FOR CHAIN LINK SECURITY FENCE AND GATES:
 OBTAIN CHAIN LINK SECURITY FENCES AND GATES, INCLUDING ACCESSORIES, FITTING, AND FASTENERS FROM SINGLE SOURCE. COMMERCIALY AVAILABLE ITEMS PRODUCED FOR THE USE INTENDED SHALL BE USED WHEREVER POSSIBLE IN THE CONSTRUCTION OF THE FENCE AND GATES. SUBMIT MANUFACTURER SHEET DRAWINGS, INSTALLATION RECOMMENDATIONS, AND CATALOG CUTS.
 CONSTRUCT FENCE AND GATES IN ACCORDANCE WITH EXIST SPECIFICATIONS UNLESS OTHERWISE SPECIFIED OR NOTED ON THESE DRAWINGS OR IN THE PROJECT MANUAL.
 SAFETY GUARD POSTS AND ROLLER GUARDS ARE REQUIRED FOR CANTILEVER SLIDE GATES USING EXTERNAL ROLLERS. SLIDE GATES SHALL COMPLY WITH ASTM F 1164.



CHAIN LINK FENCE GROUNDING

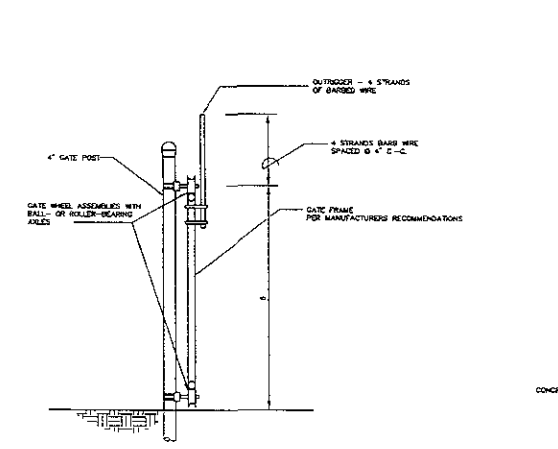


F.M.G., Inc.
 1000 S. D. Ave.
 Rapid City, SD 57702-0017
 (605) 842-4100 FAX (605) 342-4222
 www.fmgengineering.com

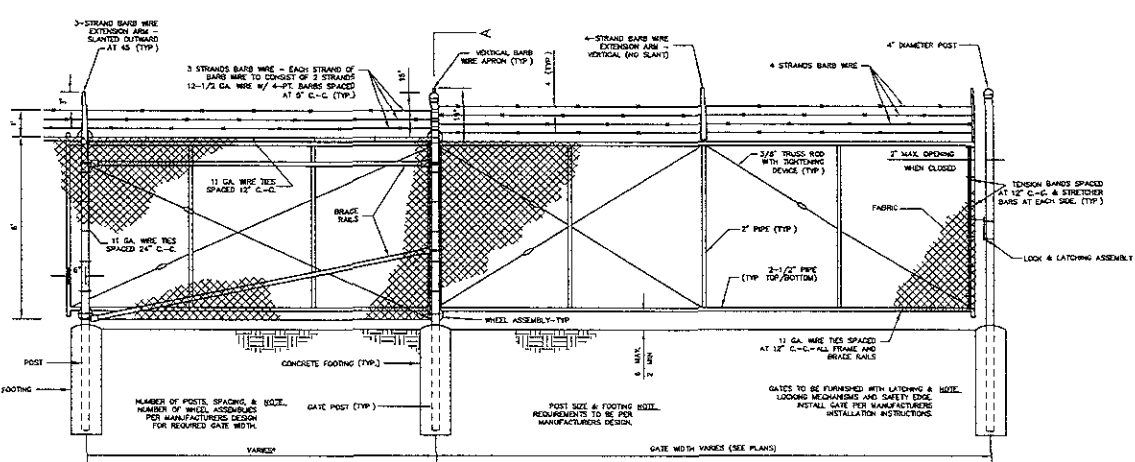


65% SUBMITTAL
 NOT FOR CONSTRUCTION

Date:	11/20/09
Designed By:	JAP
Checked By:	JRK/KJS
Drawn Date:	NOV 2009
Issue Date:	NOV 2009
Issue No.:	07/28/10
Reviewed By:	FMG
Survey Date:	2/08-2/05
Revised:	



SECTION A-A' - VEHICULAR SLIDE GATE ROLLER DETAIL



CHAIN LINK VEHICULAR SLIDE GATE

NORTH PINEDALE WATER STORAGE RESERVOIR
 FOR GOOD SAMARITAN SOCIETY
 SAINT MARTIN'S VILLAGE

DETAILS