

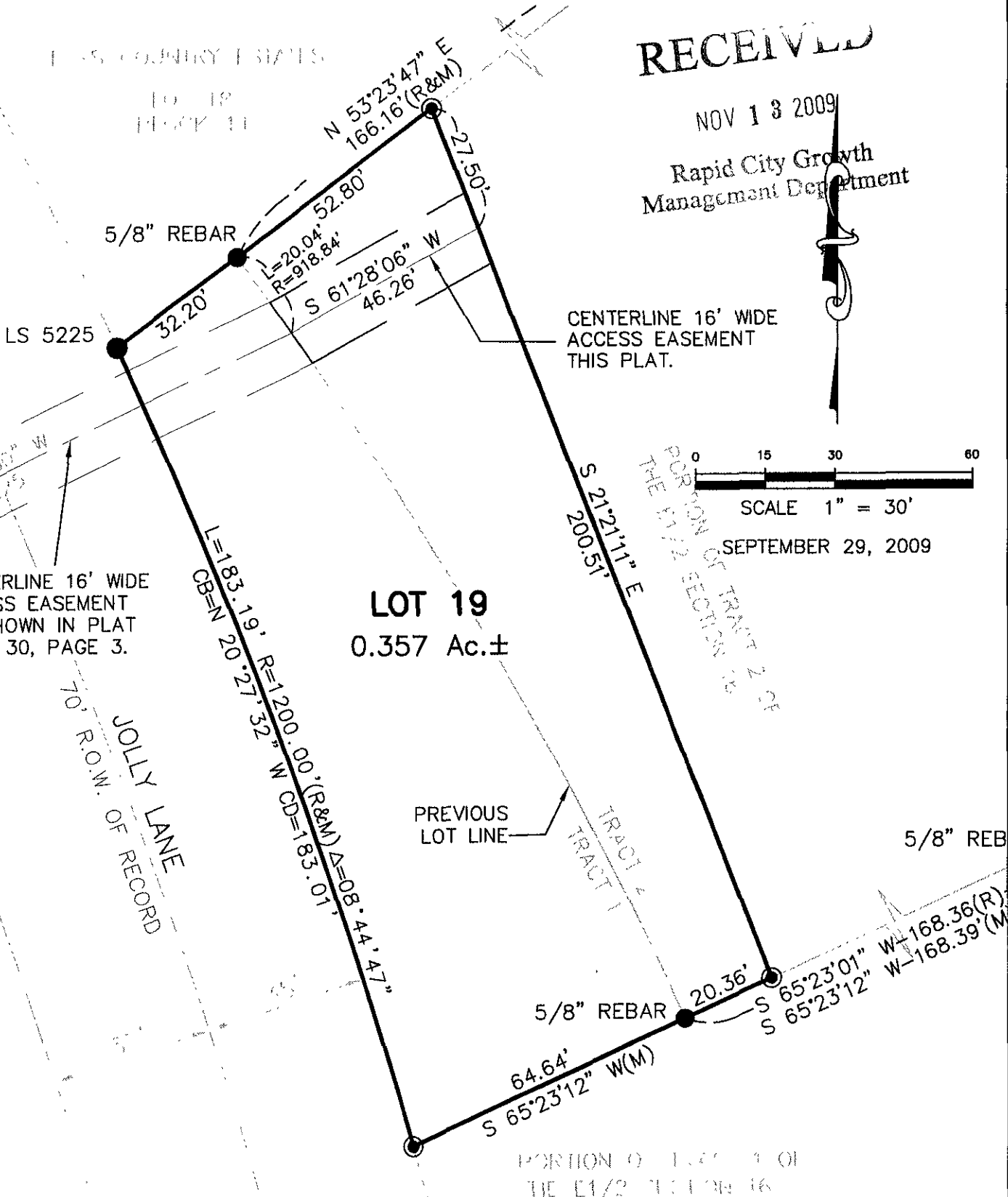
PLAT OF LOT 19 OF BLOCK 11, ELKS COUNTRY ESTATES

(formerly a portion of Tract1 and a portion of Tract2)
LOCATED IN THE E/2 SECTION 16, T1N, R8E, B.H.M.,
RAPID CITY, PENNINGTON COUNTY, SOUTH DAKOTA

RECEIVED

NOV 13 2009

Rapid City Growth
Management Department



D:\Drawings\Eds_Jeff\1260 Lot 19 Bk 11\LOT 19 BLK11.DWG, 11/02/09 02:17:10 PM, P:1