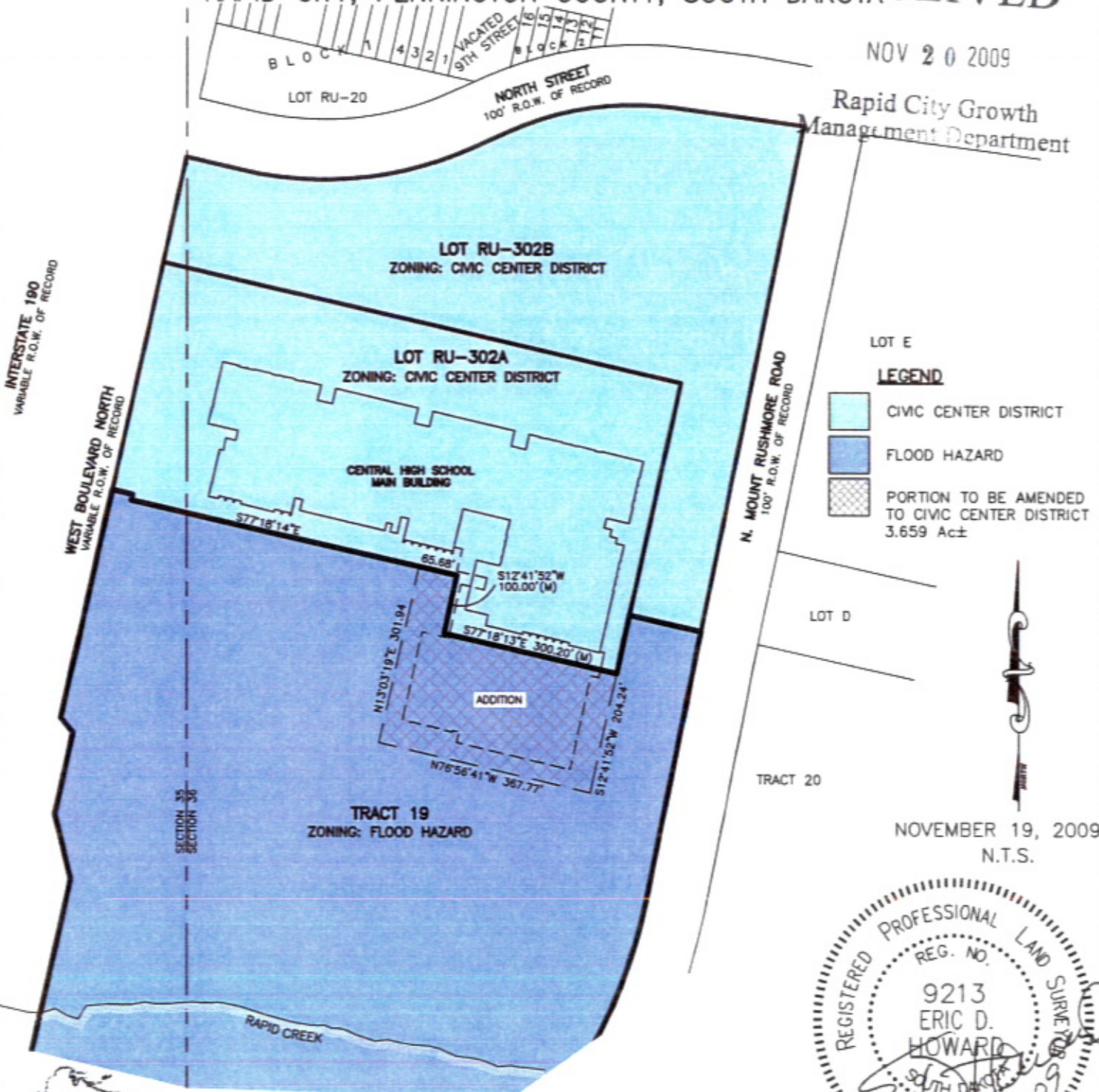


"COMPREHENSIVE PLAN AMENDMENT" PUBLIC W/FH TO CIVIC CENTER DISTRICT A PORTION OF TRACT 19 OF RAPID CITY GREENWAY TRACT LOCATED IN SECTION 36, T2N, R7E, BHM RAPID CITY, PENNINGTON COUNTY, SOUTH DAKOTA

RECEIVED

NOV 20 2009

Rapid City Growth
Management Department



NOVEMBER 19, 2009
N.T.S.

REGISTERED PROFESSIONAL LAND SURVEYOR
REG. NO. 9213
ERIC D. HOWARD
SOUTH DAKOTA
11-20-09



Renner & Associates, LLC.

616 Sixth St. * Rapid City, SD 57701 * 605/721-7310

FAX: 605/721-7313 * E-MAIL: Gary@RennerAssoc.com

Spearfish Office: 605/717-0016