

LOTS 1-28 OF BLOCK 4; TRACTS A, B, C, & D OF BLOCK 5; & DRAINAGE LOT 1, HOMESTEAD PLAZA SUBDIVISION AND DEDICATED RIGHT-OF-WAY OF CHARLOTTE COURT, ESTELLE COURT, HOMESTEAD STREET, HUGH LANE, & NEEL STREET

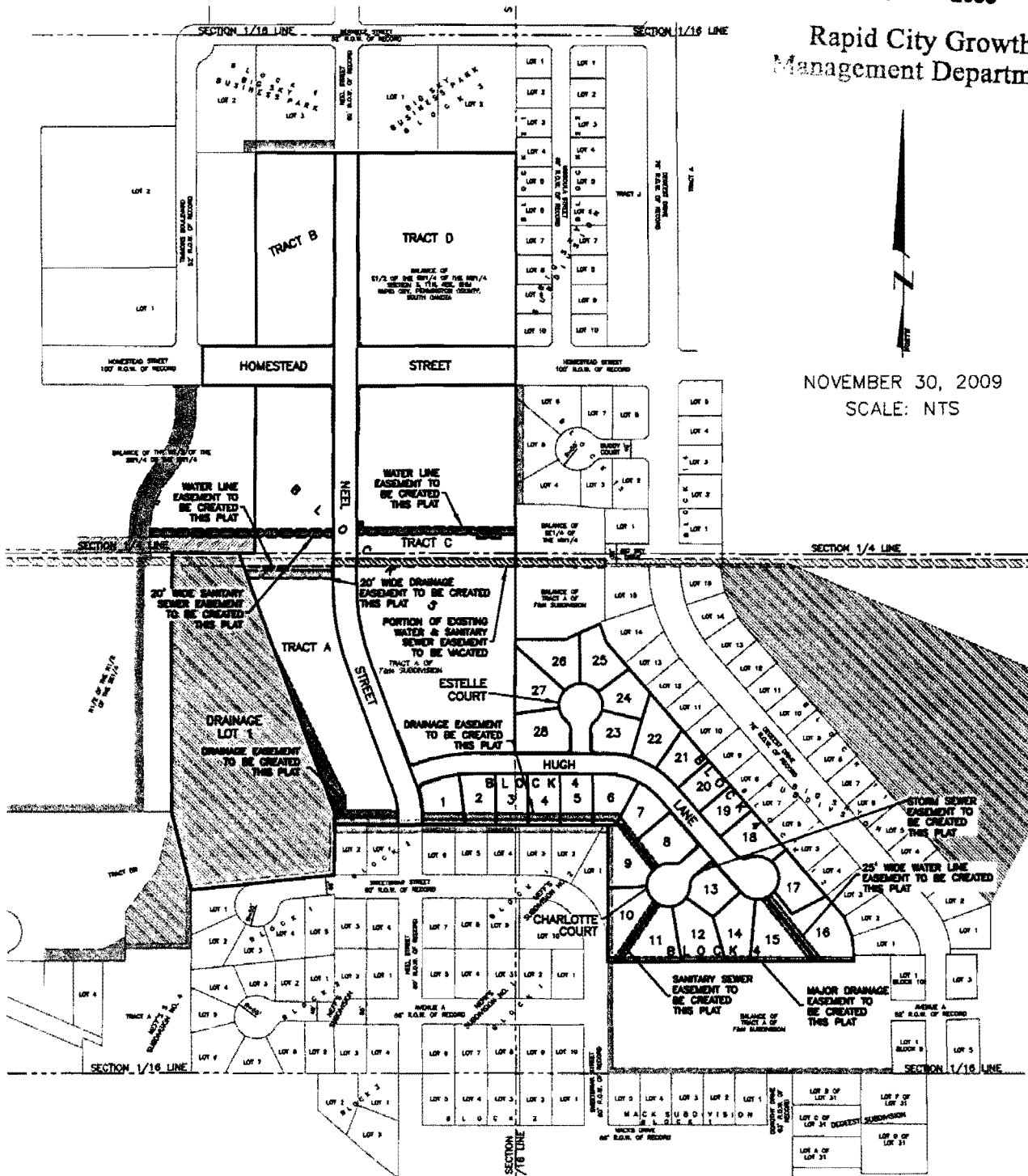
08PL099

(formerly A Portion of Tract A of F&N Subdivision, and Balance of the E1/2 of the SW1/4 of the NW1/4) LOCATED IN THE S1/2 OF THE NW1/4 & IN THE N1/2 OF THE SW1/4 SECTION 3, T1N, R8E, BHM RAPID CITY, PENNINGTON COUNTY, SOUTH DAKOTA

RECEIVED

DEC 02 2009

Rapid City Growth Management Department



NOVEMBER 30, 2009 SCALE: NTS

RENNER & ASSOCIATES, LLC.

616 SIXTH ST. * RAPID CITY, SD 57701
PHONE: 605/721-7310 FAX: 605/721-7313
SPEARFISH OFFICE: 605/717-0016

