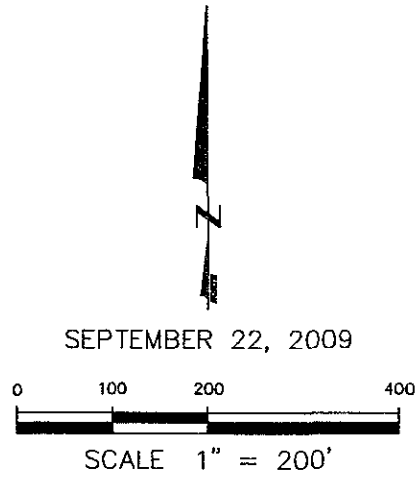
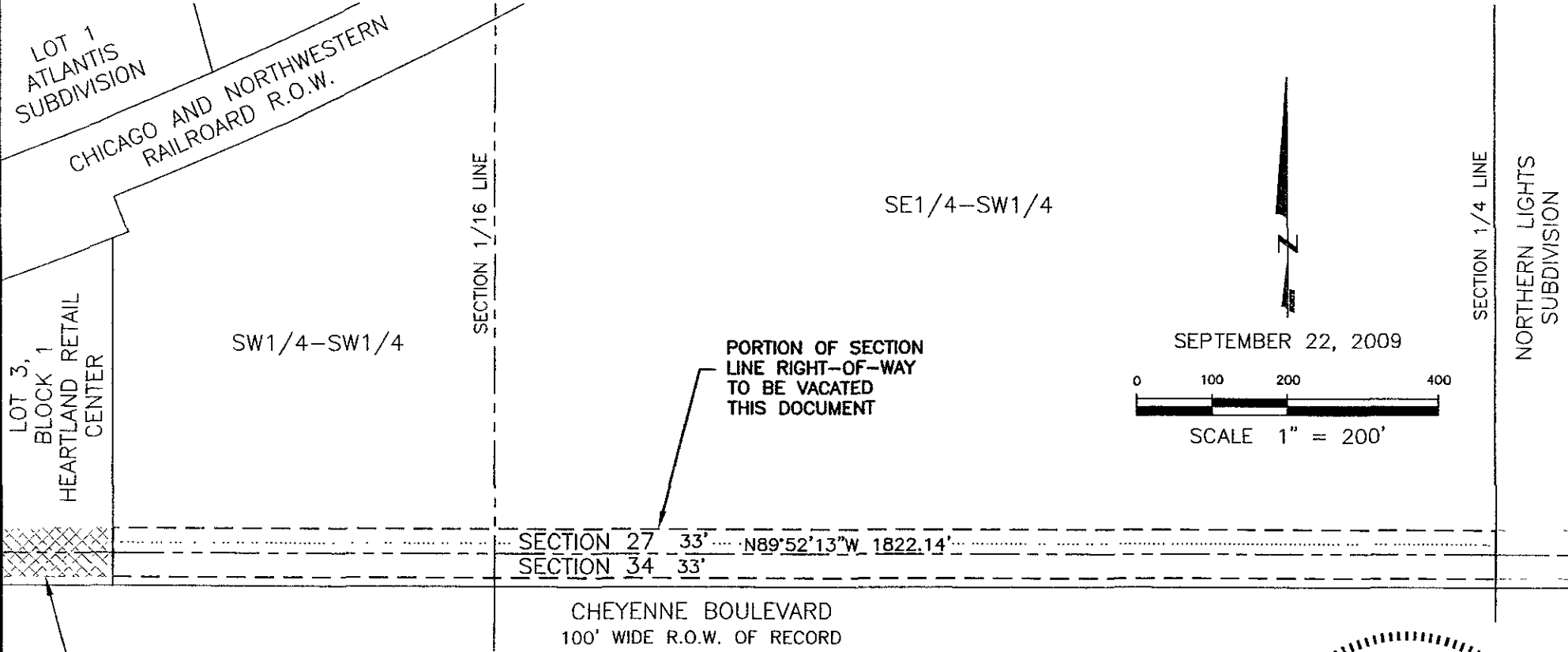


EXHIBIT 'B' VACATION OF SECTION LINE RIGHT-OF-WAY

LOCATED IN THE SW1/4 OF SECTION 27 & NW1/4 OF SECTION 34,
T2N, R8E, BHM
RAPID CITY, PENNINGTON COUNTY, SOUTH DAKOTA



LOT 1
ATLANTIS
SUBDIVISION

CHICAGO AND NORTHWESTERN
RAILROAD R.O.W.

LOT 3,
BLOCK 1
HEARTLAND RETAIL
CENTER

SW1/4-SW1/4

SECTION 1/16 LINE

SE1/4-SW1/4

PORTION OF SECTION
LINE RIGHT-OF-WAY
TO BE VACATED
THIS DOCUMENT

SEPTEMBER 22, 2009

0 100 200 400
SCALE 1" = 200'

SECTION 1/4 LINE
NORTHERN LIGHTS
SUBDIVISION

SECTION 27 33' N89°52'13"W 1822.14'
SECTION 34 33'

CHEYENNE BOULEVARD
100' WIDE R.O.W. OF RECORD

NE1/4-NW1/4

PREVIOUSLY VACATED 66'
SECTION LINE RIGHT-OF-WAY
AS SHOWN IN PLAT BOOK 31,
PAGE 111



CITY HALL 1903

RENNER & ASSOCIATES, LLC.

616 SIXTH ST. * RAPID CITY, SD 57701
PHONE: 605/721-7310 * FAX: 605/721-7313
EMAIL: GARY@RENNERASSOC.COM

