

LOTS 1-28 OF BLOCK 4; TRACTS A, B, C, & D OF BLOCK 5; & DRAINAGE LOT 1,
HOMESTEAD PLAZA SUBDIVISION
AND DEDICATED RIGHT-OF-WAY OF CHARLOTTE COURT,
ESTELLE COURT, HOMESTEAD STREET, HUGH LANE, & NEEL STREET

08PL099

(formerly A Portion of Tract A of F&N Subdivision, and
Balance of the E1/2 of the SW1/4 of the NW1/4)
LOCATED IN THE S1/2 OF THE NW1/4 &
IN THE N1/2 OF THE SW1/4
SECTION 3, T1N, R8E, BHM
RAPID CITY, PENNINGTON COUNTY, SOUTH DAKOTA

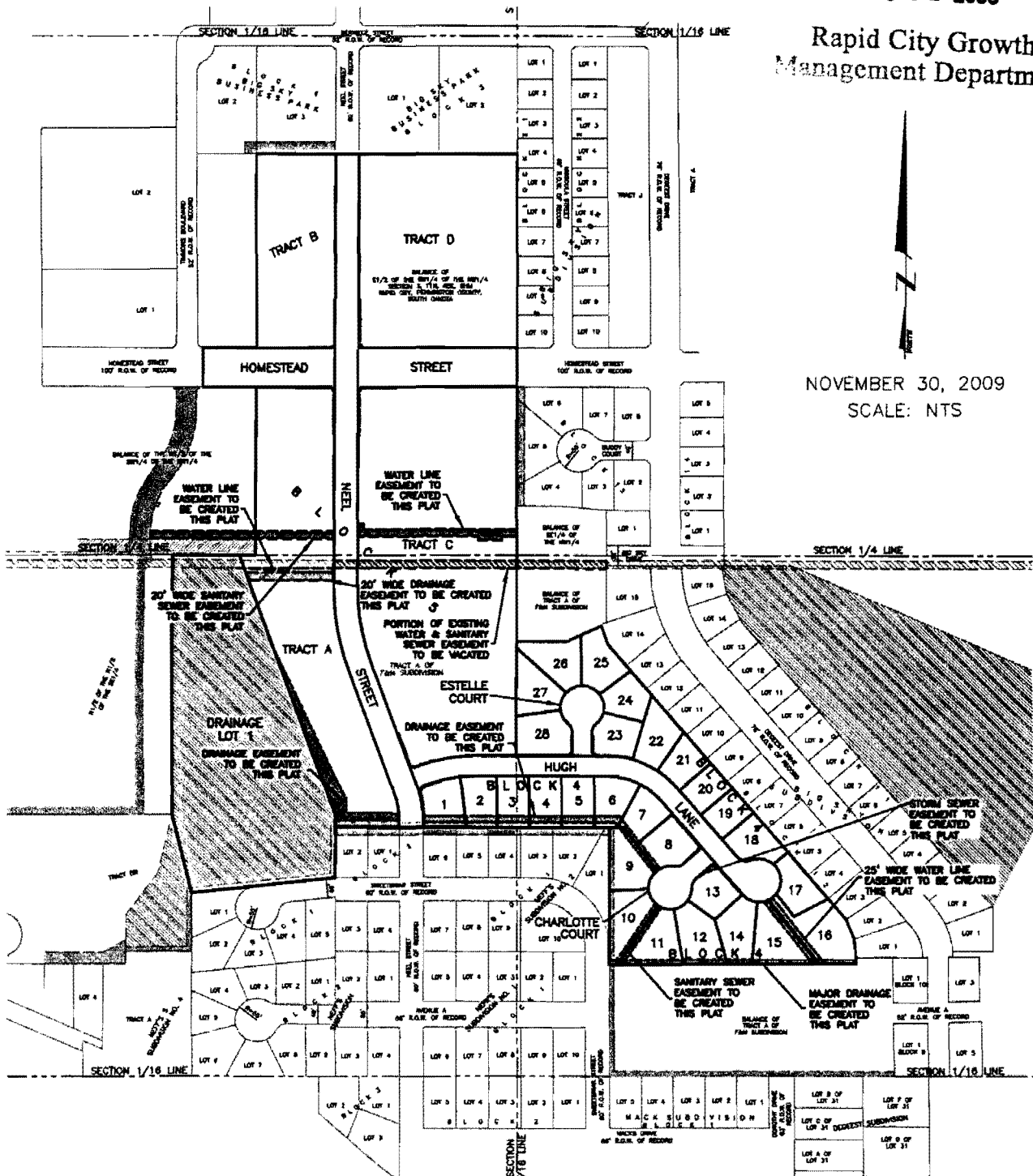
RECEIVED

DEC 02 2009

Rapid City Growth
Management Department



NOVEMBER 30, 2009
SCALE: NTS



RENNER & ASSOCIATES, LLC.

616 SIXTH ST. * RAPID CITY, SD 57701
PHONE: 605/721-7310 FAX: 605/721-7313
SPEARFISH OFFICE: 605/717-0016

