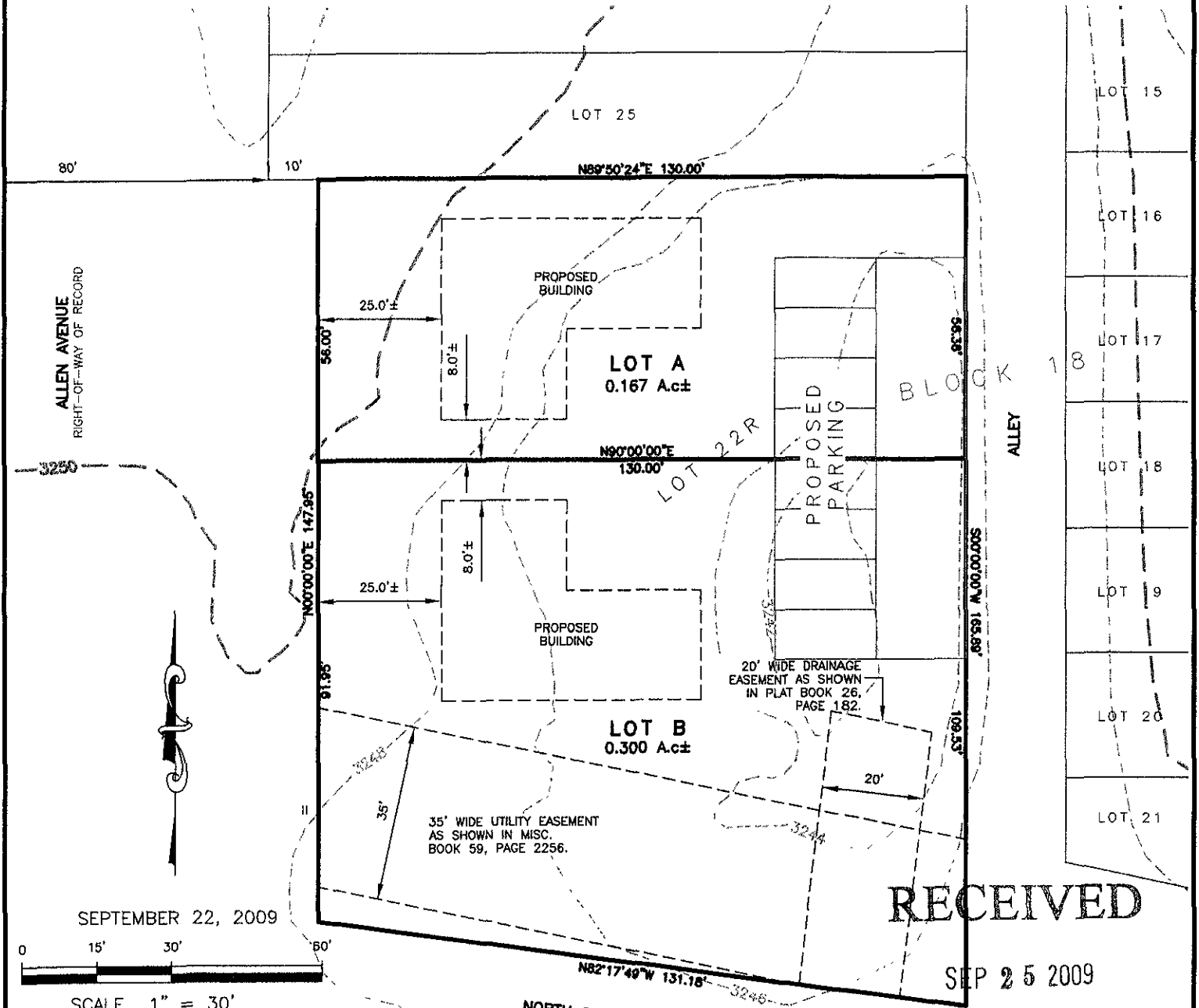


"SITE LAYOUT"

LOTS A AND B OF LOT 22R OF BLOCK 18, NORTH RAPID ADDITION

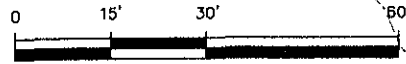
LOCATED IN THE S1/2 OF THE NW1/4,
SECTION 36, T2N, R7E, BHM
RAPID CITY, PENNINGTON COUNTY, SOUTH DAKOTA



RECEIVED

SEP 25 2009

SEPTEMBER 22, 2009



SCALE 1" = 30'

LEGEND

- MINOR CONTOURS (2')
- CONTOURS: SCALED FROM RAPID CITY GIS RAPID MAP



CITY HALL 1903

Renner & Associates, LLC.

616 Sixth St. * Rapid City, SD 57701 * 605/721-7310
 FAX: 605/721-7313 * E-MAIL: Gary@RennerAssoc.com
 * Spearfish 605/717-0016 *

Rapid City Growth Management Department

REGISTERED PROFESSIONAL LAND SURVEYOR

REG. NO. 9233

HOWARD

SOUTH DAKOTA

Preliminary