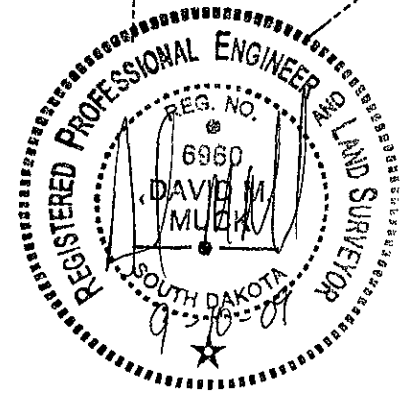
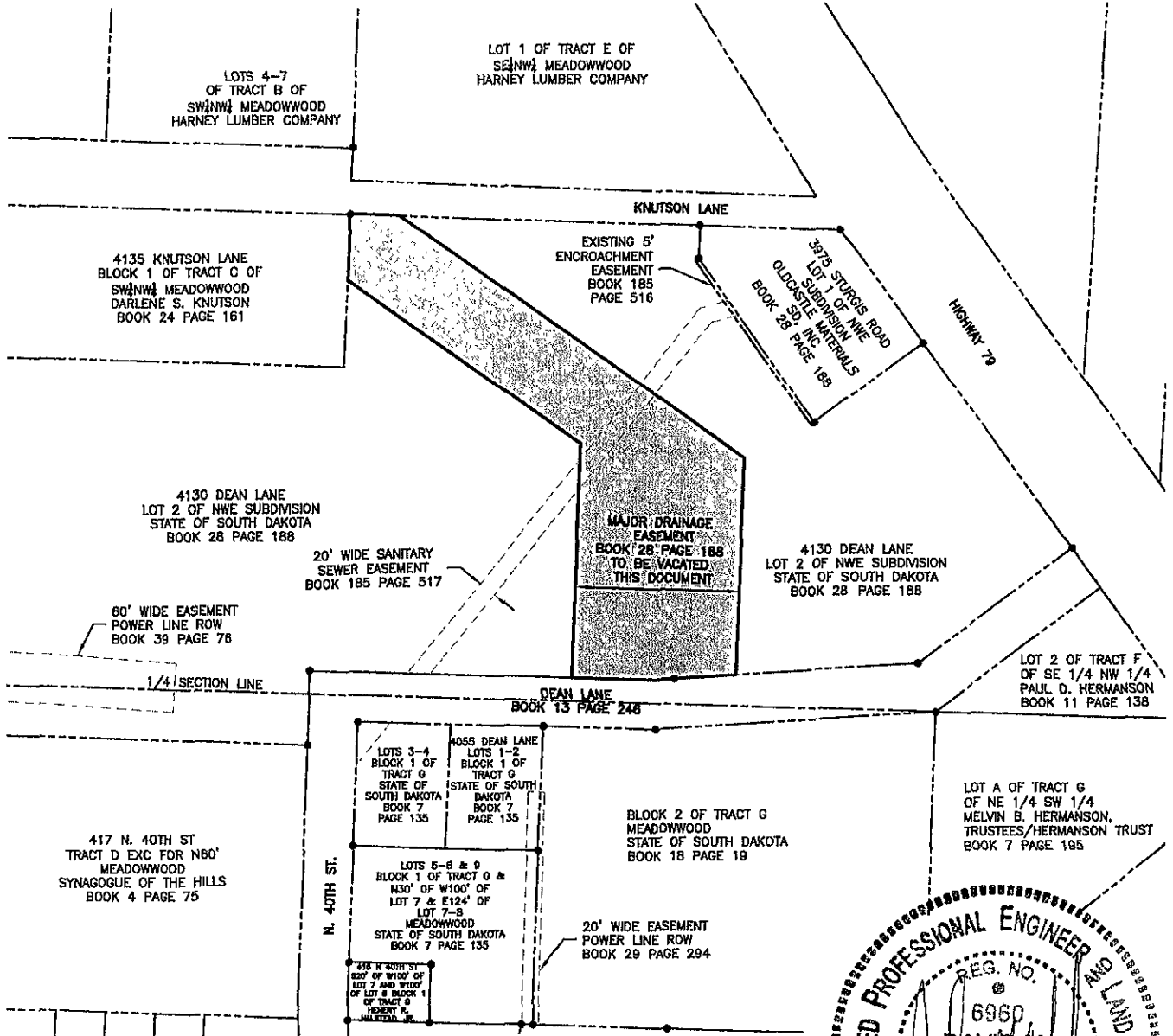




SHOWING A TRACT OF LAND TO BE VACATED  
IN A PORTION OF SECTION 33,  
TOWNSHIP 2 NORTH - RANGE 7 EAST  
OF OF THE BHM RAPID CITY,  
PENNINGTON COUNTY, SOUTH DAKOTA

LEGEND

- FOUND SURVEY MONUMENT
- EASEMENT TO BE VACATED THIS PLAT.



RECEIVED

EXHIBIT A

SEP 11 2009

PROJECT NO.  
J09-110

FIGURE NO.  
1 OF 1

04-15-09 P:\09-110\AutoCAD\Easements\DRAINAGE EASEMENT & SEWER EASEMENT.dwg