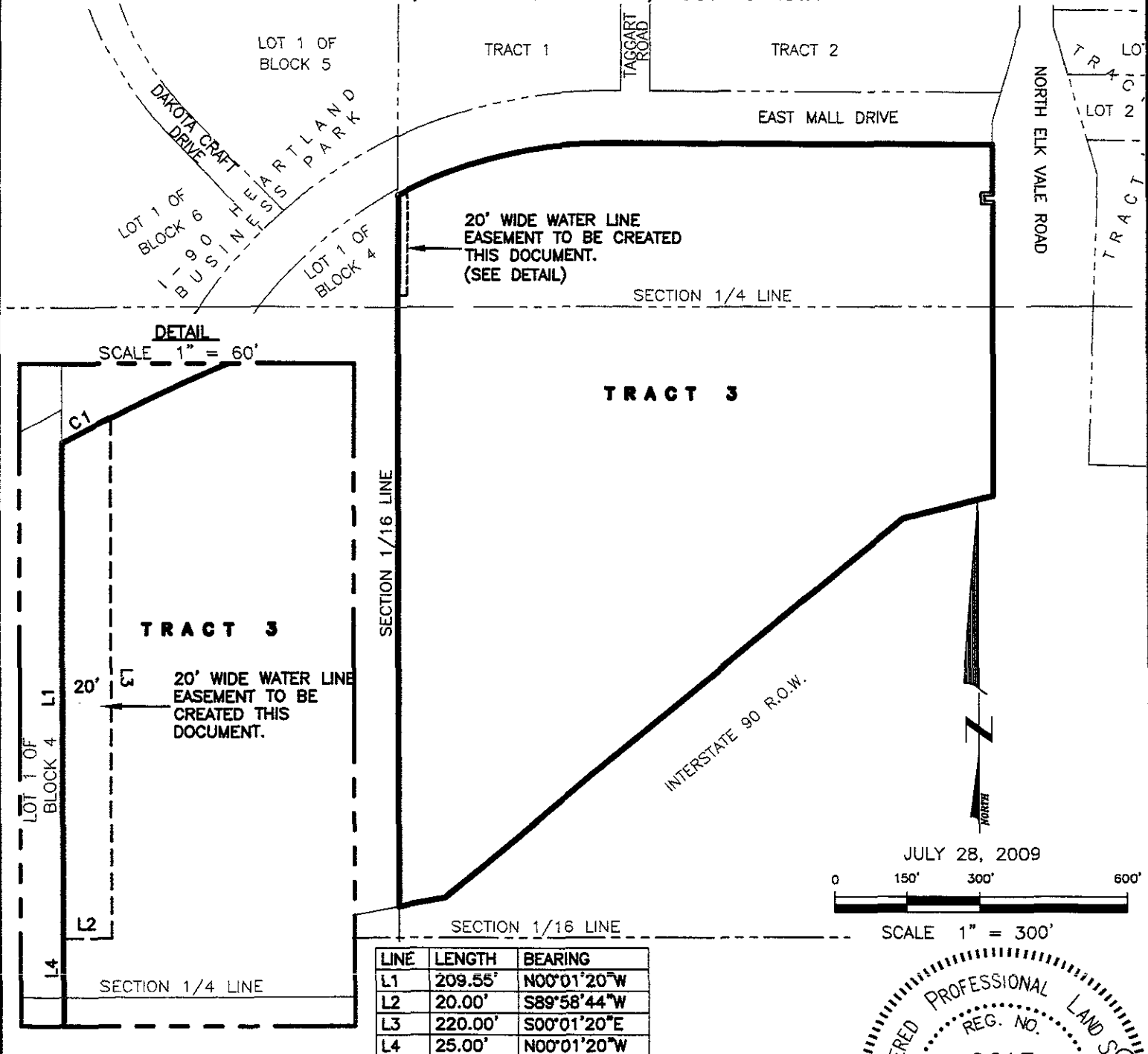


EXHIBIT 'A'
20' WIDE WATER LINE EASEMENT
TRACT 3 OF
DISCOVERY SUBDIVISION
 LOCATED IN THE NE1/4 OF THE SE1/4
 AND IN THE SE1/4 OF THE NE1/4
 SECTION 28, T2N, R8E, BHM
 RAPID CITY, PENNINGTON COUNTY, SOUTH DAKOTA

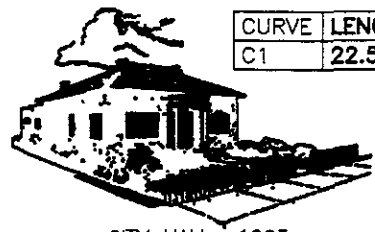
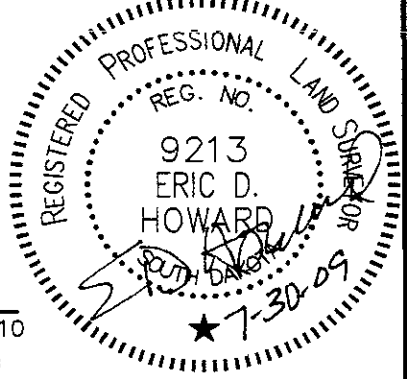


DETAIL
 SCALE 1" = 60'

JULY 28, 2009
 0 150' 300' 600'
 SCALE 1" = 300'

LINE	LENGTH	BEARING
L1	209.55'	N00°01'20"W
L2	20.00'	S89°58'44"W
L3	220.00'	S00°01'20"E
L4	25.00'	N00°01'20"W

CURVE	LENGTH	RADIUS	DELTA	CHORD BEARING	CHORD DISTANCE
C1	22.57	915.00	01°24'47"	N62°23'11"E	22.57



CITY HALL 1903

Renner & Associates, LLC.

616 Sixth St. * Rapid City, SD 57701 * 605/721-7310
 FAX: 605/721-7313 * E-MAIL: Gary@RennerAssoc.com
 * Spearfish 605/717-0016 *