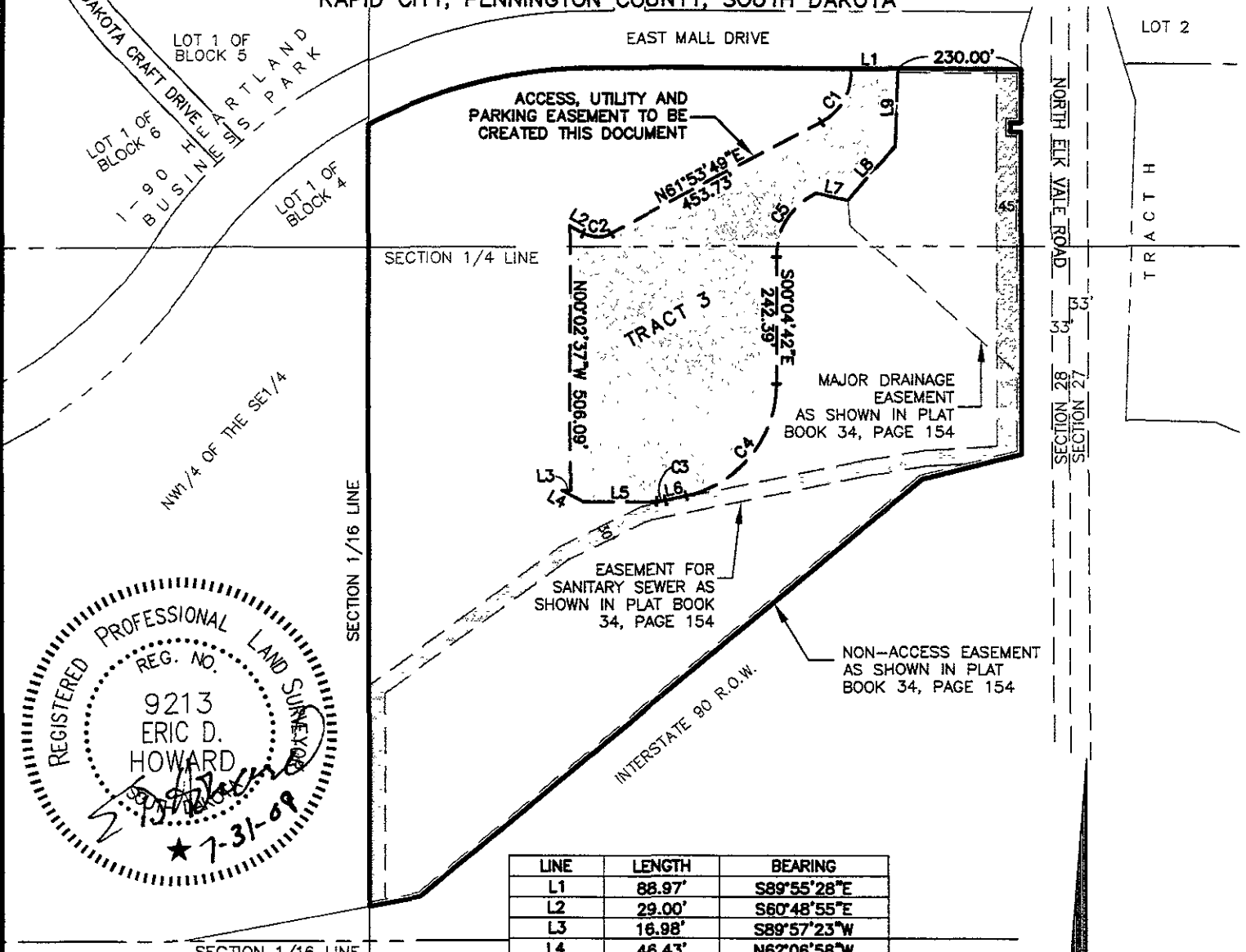


EXHIBIT 'A'

ACCESS, UTILITY AND PARKING EASEMENT, TRACT 3 OF DISCOVERY SUBDIVISION

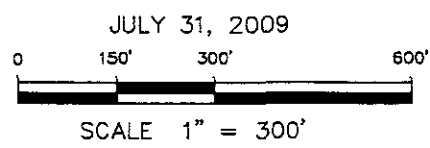
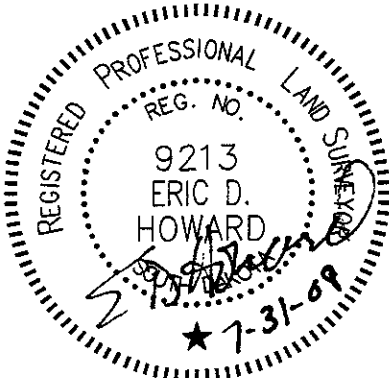
LOCATED IN THE NE1/4 OF THE SE1/4
AND IN THE SE1/4 OF THE NE1/4
SECTION 28, T2N, R8E, BHM

RAPID CITY, PENNINGTON COUNTY, SOUTH DAKOTA



LINE	LENGTH	BEARING
L1	88.97'	S89°55'28"E
L2	29.00'	S60°48'55"E
L3	16.98'	S89°57'23"W
L4	46.43'	N62°06'58"W
L5	138.66'	S90°00'00"W
L6	40.35'	S77°47'03"W
L7	61.73'	N77°59'35"W
L8	136.06'	S40°42'46"W
L9	149.70'	S01°33'15"W

CURVE	LENGTH	RADIUS	DELTA	CHORD BEARING	CHORD DISTANCE
C1	124.23	105.00	67°47'23"	N28°00'08"E	117.11
C2	55.01	55.00	57°18'31"	S89°28'11"E	52.75
C3	17.06	80.00	12°12'57"	S83°53'32"W	17.02
C4	298.97	220.00	77°51'45"	S38°51'10"W	276.48
C5	151.95	136.00	64°01'00"	S32°02'21"W	144.17
C6	34.68	129.50	15°20'31"	N07°42'52"W	34.57



CITY HALL 1903

Renner & Associates, LLC.

616 Sixth St. * Rapid City, SD 57701 * 605/721-7310
FAX: 605/721-7313 * E-MAIL: Gary@RennerAssoc.com
* Spearfish 605/717-0016 *