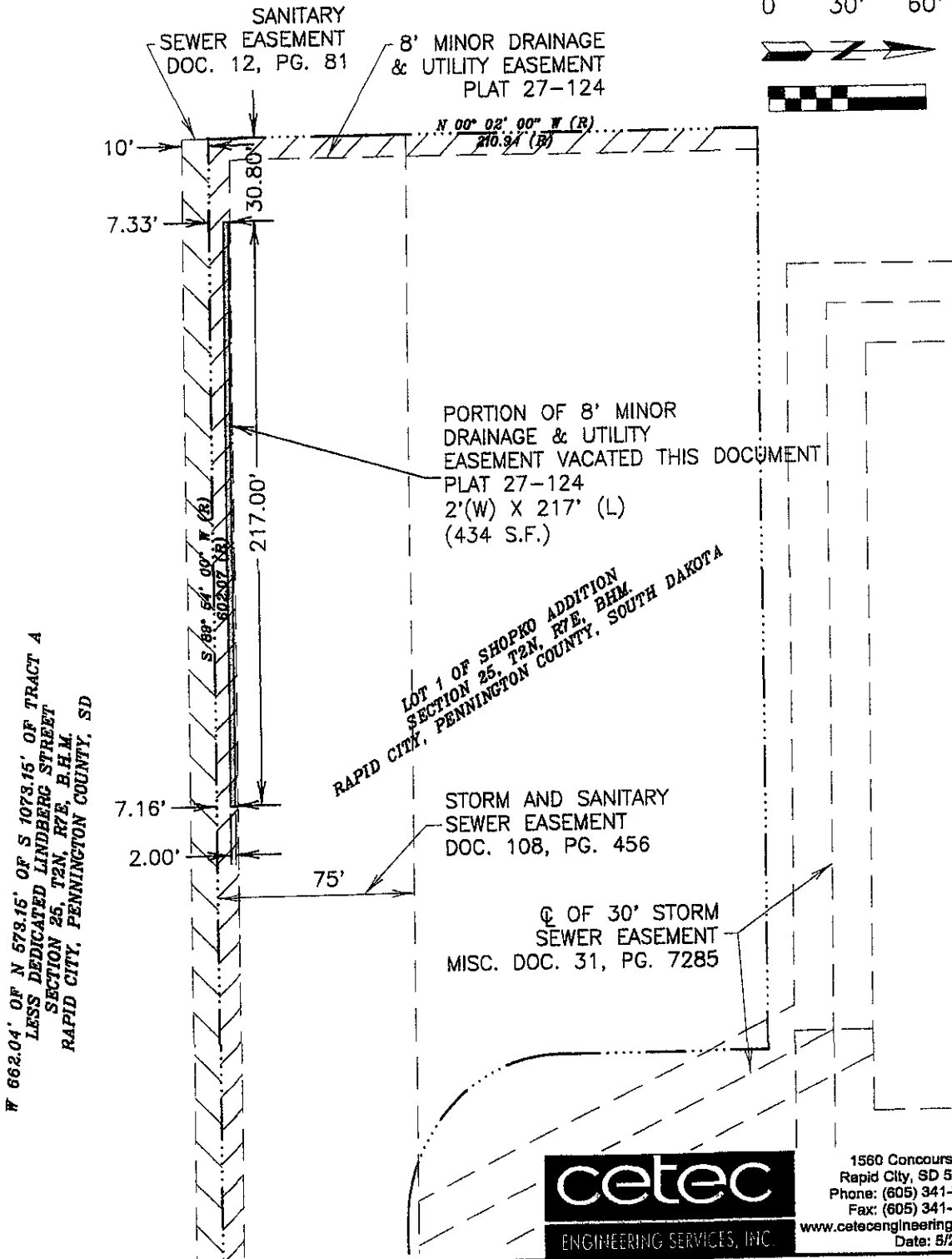
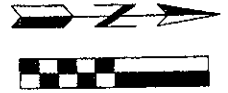


EXHIBIT "A"

PARTIAL EASEMENT VACATION IN LOT 1 OF SHOPKO ADDITION SECTION 25, T2N, R7E, BHM. RAPID CITY, PENNINGTON COUNTY, SOUTH DAKOTA

0 30' 60'



cetec

ENGINEERING SERVICES, INC.

1560 Concourse Dr.
 Rapid City, SD 57703
 Phone: (605) 341-7800
 Fax: (605) 341-7864
 www.cetecengineering.com
 Date: 5/27/09

DATE PLOTTED: 5/27/09 10:53 AM (User: D:\ADMIN\SYSTEMS\PRODUCTS & PROFESSIONAL\STATE OFFICIALS\RETURNING WALL SURVEY\09VE013.DWG)