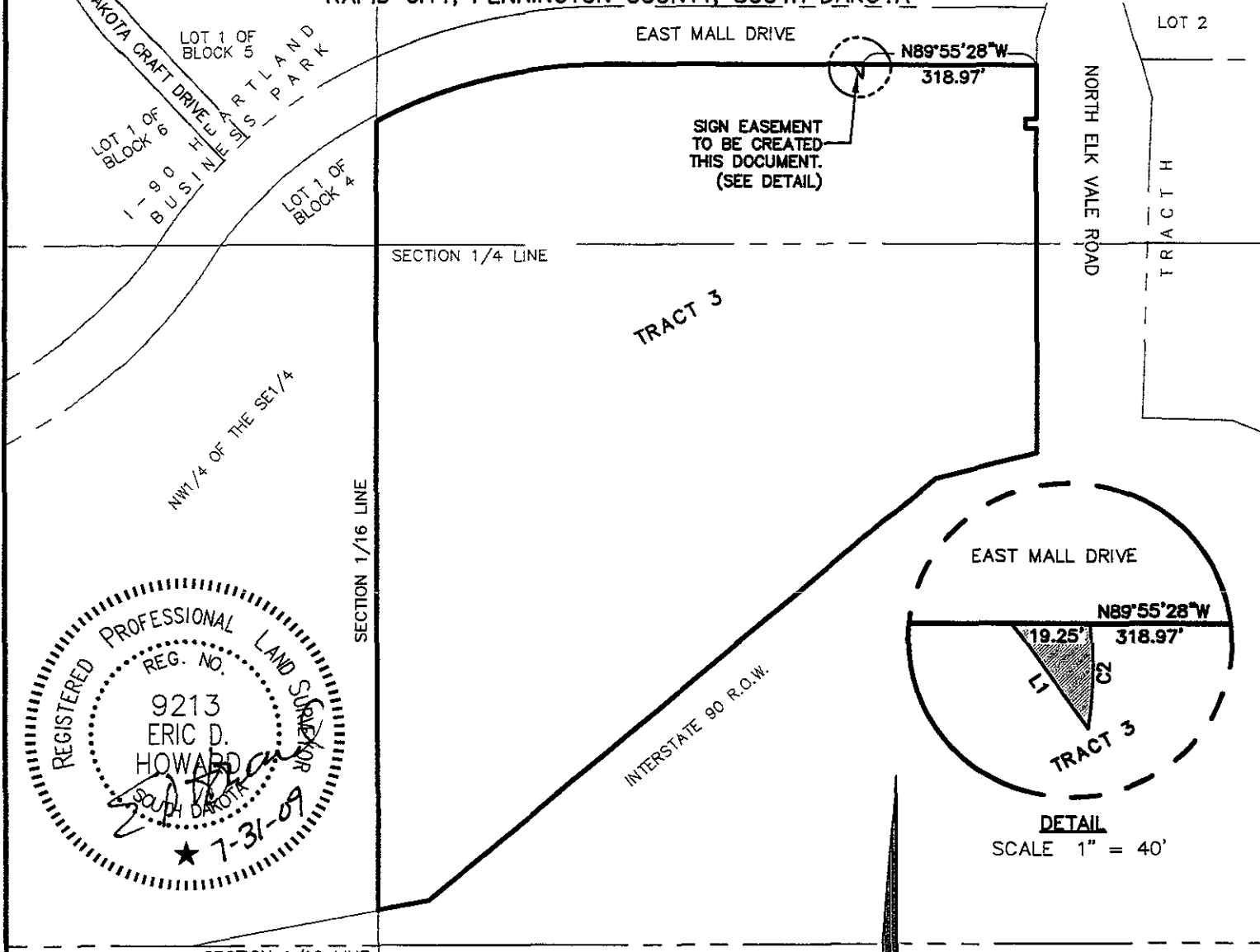
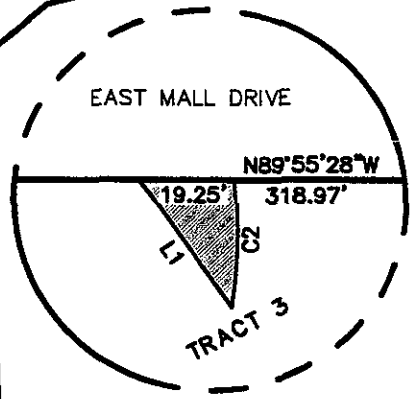


EXHIBIT 'A' SIGN EASEMENT, TRACT 3 OF DISCOVERY SUBDIVISION

LOCATED IN THE NE1/4 OF THE SE1/4
AND IN THE SE1/4 OF THE NE1/4
SECTION 28, T2N, R8E, BHM
RAPID CITY, PENNINGTON COUNTY, SOUTH DAKOTA



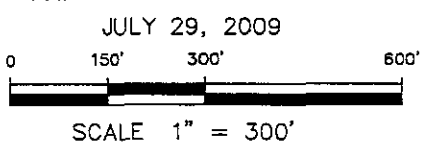
REGISTERED PROFESSIONAL LAND SURVEYOR
REG. NO. 9213
ERIC D. HOWARD
SOUTH DAKOTA
★ 7-31-09



DETAIL
SCALE 1" = 40'

LINE	LENGTH	BEARING
L1	32.58'	S34°48'00"E

CURVE	LENGTH	RADIUS	DELTA	CHORD BEARING	CHORD DISTANCE
C1	26.81	105.00	14°37'45"	N01°25'18"E	26.74



Renner & Associates, LLC.

616 Sixth St. * Rapid City, SD 57701 * 605/721-7310
FAX: 605/721-7313 * E-MAIL: Gary@RennerAssoc.com
* Spearfish 605/717-0016 *