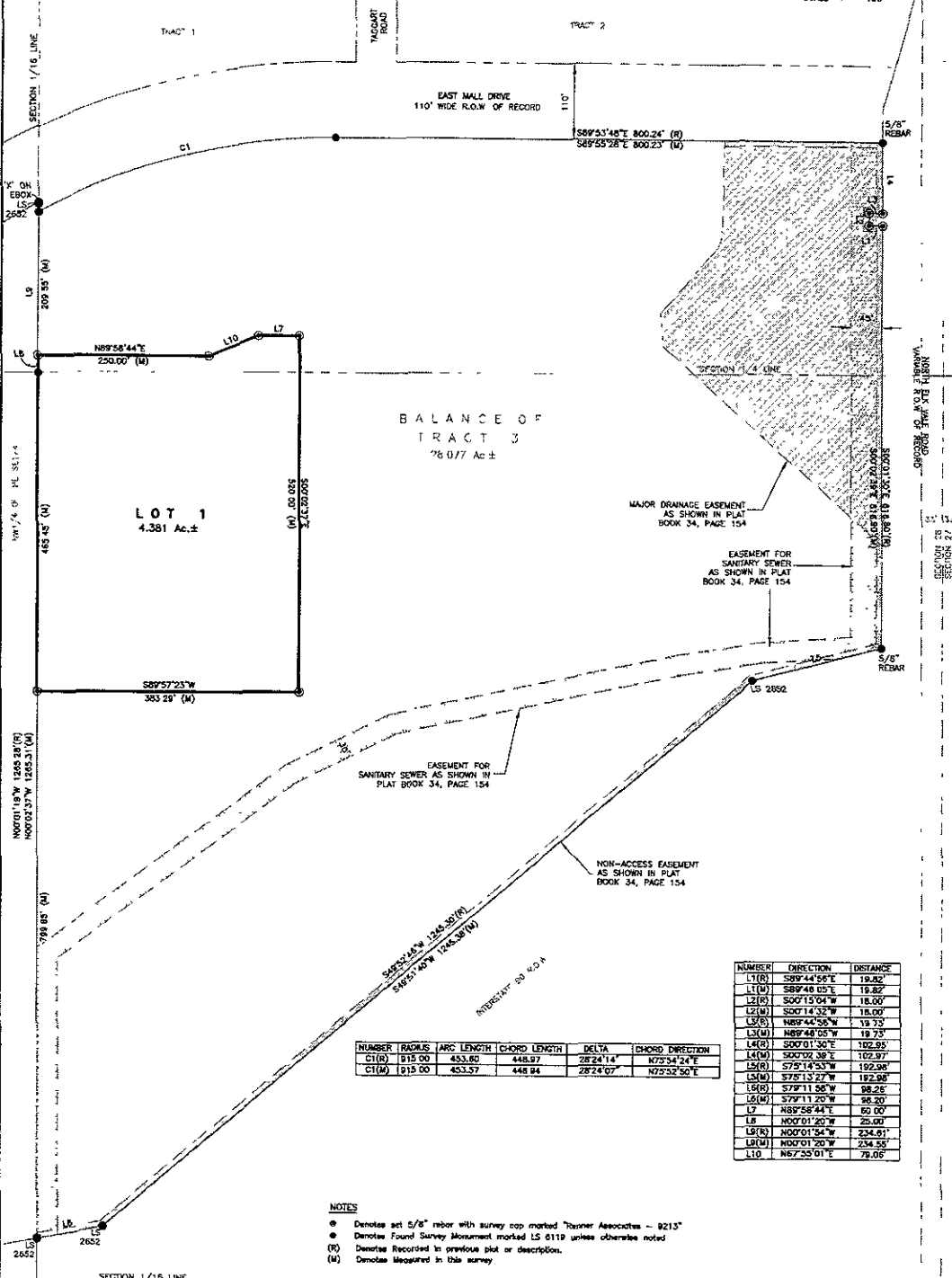


**PLAT OF
LOT 1 OF TRACT 3 OF
DISCOVERY SUBDIVISION**
(formerly a portion of Tract 3 of Discovery Subdivision)
LOCATED IN THE NE1/4 OF THE NE1/4
AND IN THE SE1/4 OF THE NE1/4
SECTION 28, T2N, R8E, BHM
RAPID CITY, PENNINGTON COUNTY, SOUTH DAKOTA

JULY 28, 2009
SCALE 1" = 100'



NUMBER	RADIUS	ARC LENGTH	CHORD LENGTH	DELTA	CHORD DIRECTION
C1(R)	915.00	433.60	448.97	28°24'14"	N75°34'24"E
C1(M)	915.00	433.57	448.94	28°24'07"	N75°32'50"E

NUMBER	DIRECTION	DISTANCE
L1(R)	S89°44'56"E	19.82
L1(M)	S89°48'05"E	19.82
L2(R)	S00°13'04"W	18.00
L2(M)	S00°14'32"W	18.00
L3(R)	N89°44'58"W	18.73
L3(M)	N89°48'05"W	18.73
L4(R)	S00°01'30"E	102.95
L4(M)	S00°02'38"E	102.97
L5(R)	S75°14'23"W	192.98
L5(M)	S75°13'27"W	192.98
L6(R)	S78°11'58"W	98.28
L6(M)	S79°11'20"W	98.20
L7	N89°58'44"E	60.00
LB	N00°01'20"W	25.00
LR(R)	N00°01'54"W	234.61
LR(M)	N00°01'20"W	234.55
L10	N67°52'01"E	78.08

- NOTES**
- Denotes set 5/8" rebar with survey cap marked "Banner Associates - 9215"
 - Denotes Found Survey Measurement marked LS 6119 unless otherwise noted
 - (R) Denotes Recorded in previous plat or description.
 - (M) Denotes Measured in this survey.

BASIS OF BEARINGS: GEODETIC NORTH AS DETERMINED BY GLOBAL POSITIONING SYSTEM (GPS) WGS 84
UTILITY AND MINOR DRAINAGE EASEMENTS: SHOWN ON THE INTERIOR SIDES OF ALL LOT LINES.
BUILDING SETBACK REQUIREMENTS AS STATED IN THE ZONING AND/OR PLATTING REGULATIONS.
LOTS 1 AND 2 SUBJECT TO RIGHT-OF-WAY DATED APRIL 15 1956 GRANTED TO RAPID CITY TELEVISION CORPORATION FILED SEPTEMBER 26, 1961, AND RECORDED IN BOOK 77 OF MISS. RECORDS ON PAGE 6337 IN THE OFFICE OF THE REGISTER OF DEEDS, PENNINGTON COUNTY, SOUTH DAKOTA. (ROUTES NOT SET FORTH)

ANY MAJOR DRAINAGE EASEMENT SHOWN HEREON SHALL BE KEPT FREE OF ALL OBSTRUCTIONS INCLUDING BUT NOT LIMITED TO BUILDINGS, WALLS, FENCES, HEDGES, TREES AND SHRUBS. THESE EASEMENTS GRANT TO ALL PUBLIC AUTHORITIES THE RIGHT TO CONSTRUCT, OPERATE, MAINTAIN, INSPECT, AND REPAIR SUCH IMPROVEMENTS AND STRUCTURES AS IT DEEMS EXPEDIENT TO FACILITATE DRAINAGE FROM ANY SOURCE.

PREPARED FOR:
DORIAN DEWITT INTERNATIONAL, INC
638 KANSAS CITY STREET, STE. 4
RAPID CITY SD 57701
(605) 346-0638
PAGE #1



RECEIVED
JUL 31 2009
Rapid City Growth
Management Department