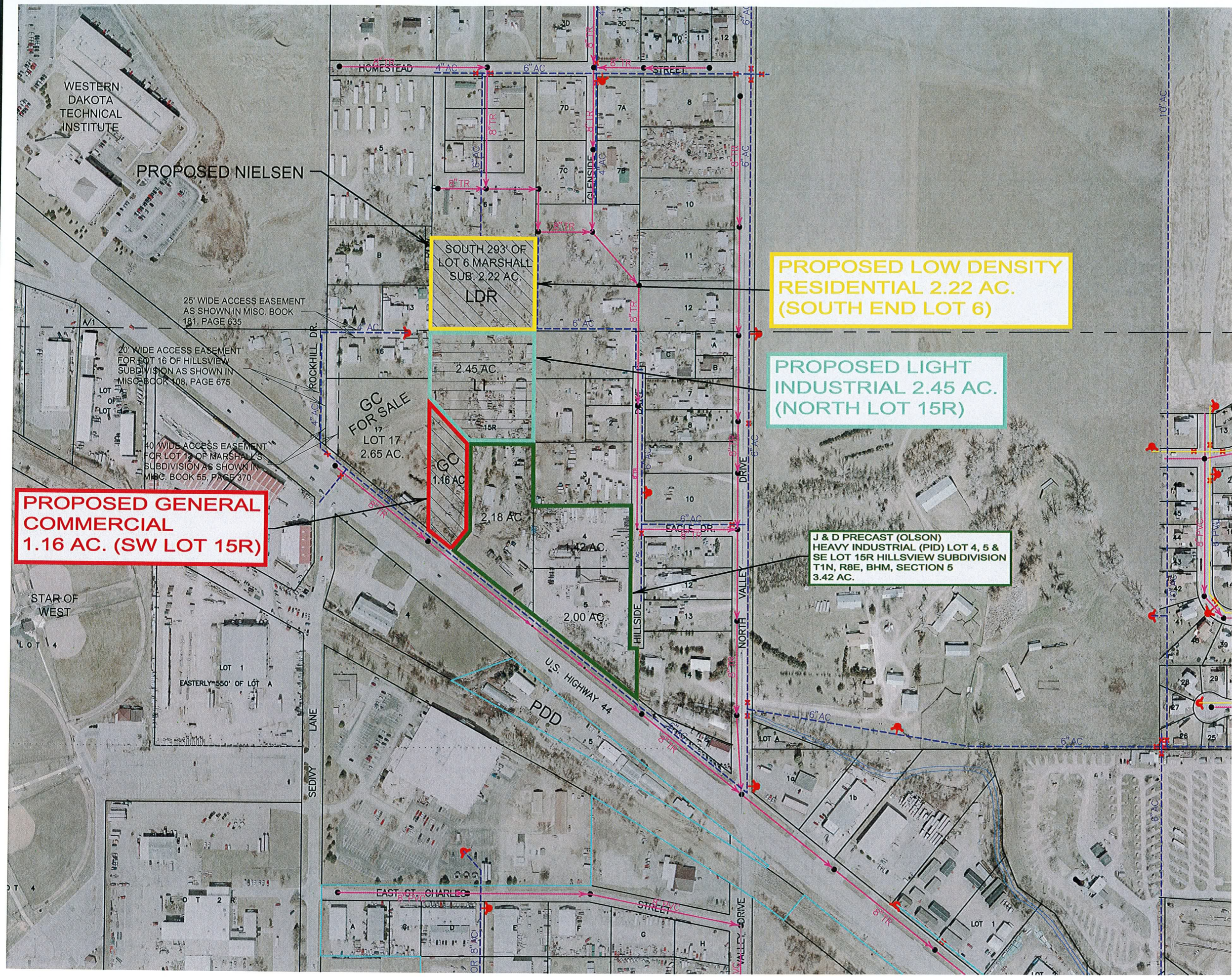
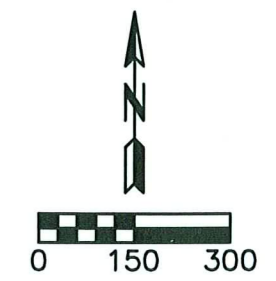


September 16, 2009 2:37:55 p.m.
Drawing: 09171.01 ZONING MAP.DWG (FOX) (\MAIN-DATA\CETEC\PROJECTS & PROPOSALS\09171.00 J & D PRECAST PLANNED DEVELOPMENT DRAWINGS\EXHIBITS\)

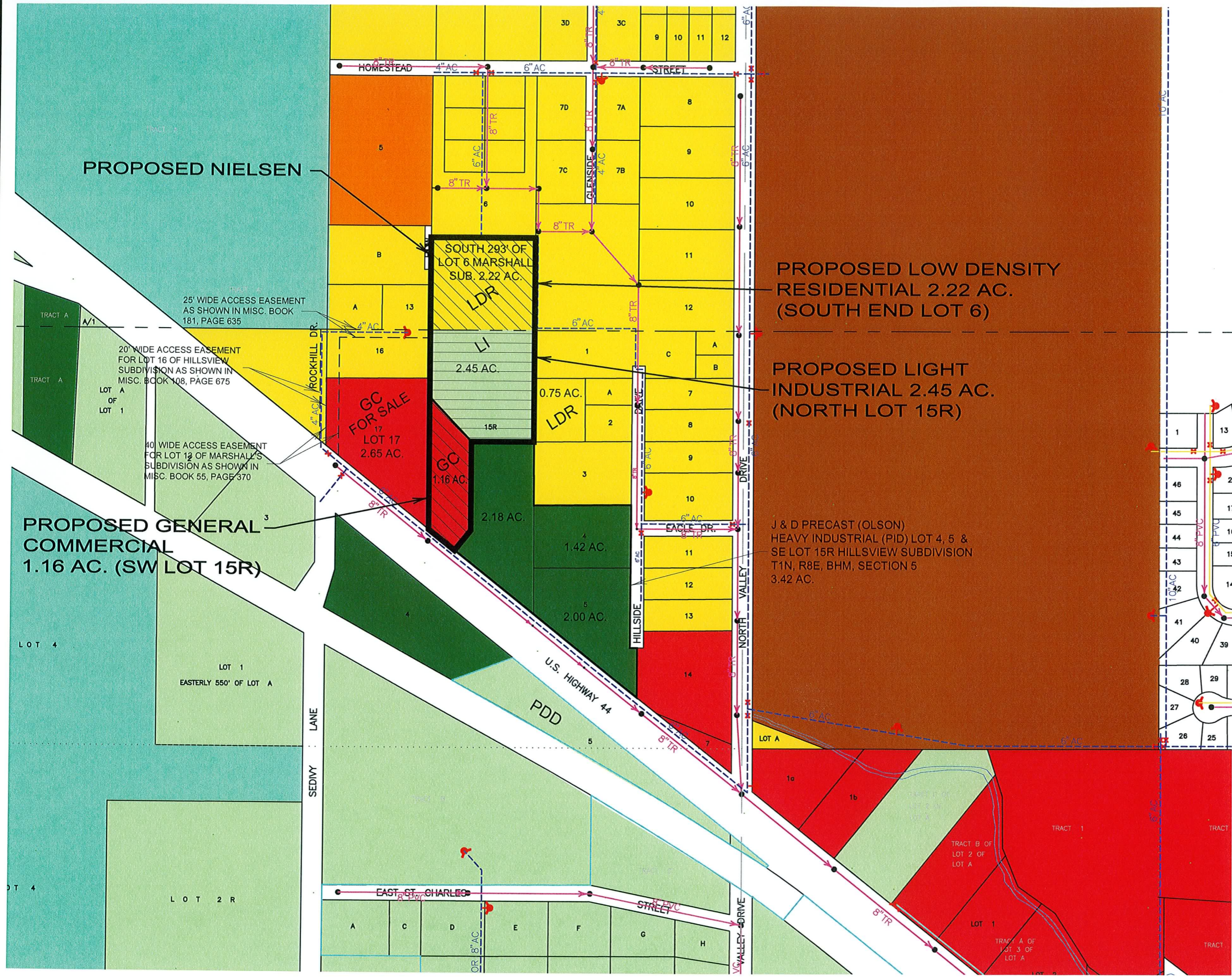
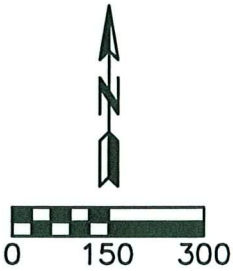


ROYAL NIELSEN PROPERTY



1560 Concourse Drive
Rapid City, SD 57703
Phone: (605) 341-7800
Fax: (605) 341-7864
www.cetecengineering.com
Date: 9/16/09

September 16, 2009 2:37:55 p.m.
 Drawing: 09171.01 ZONING MAP.DWG (FOX) (\\MAIN-DATA\CETEC\PROJECTS & PROPOSALS\09171.00 J & D PRECAST PLANNED DEVELOPMENT\DRAWINGS\EXHIBITS)



CURRENT ZONING LEGEND

- HEAVY INDUSTRIAL
- LIGHT INDUSTRIAL
- GENERAL COMMERCIAL
- LOW DENSITY RESIDENTIAL
- GENERAL AGRICULTURE
- PUBLIC

PROPOSED NIELSEN ZONING LEGEND

- PROPOSED GENERAL COMMERCIAL (GC)
- PROPOSED LIGHT INDUSTRIAL (LI) W/ FENCING
- PROPOSED LOW DENSITY RESIDENTIAL (LDR)



PROPOSED GENERAL COMMERCIAL
 1.16 AC. (SW LOT 15R)

PROPOSED LOW DENSITY RESIDENTIAL
 2.22 AC. (SOUTH END LOT 6)

PROPOSED LIGHT INDUSTRIAL
 2.45 AC. (NORTH LOT 15R)

J & D PRECAST (OLSON)
 HEAVY INDUSTRIAL (PID) LOT 4, 5 &
 SE LOT 15R HILLSVIEW SUBDIVISION
 T1N, R8E, BHM, SECTION 5
 3.42 AC.

25' WIDE ACCESS EASEMENT
 AS SHOWN IN MISC. BOOK
 181, PAGE 635

20' WIDE ACCESS EASEMENT
 FOR LOT 16 OF HILLSVIEW
 SUBDIVISION AS SHOWN IN
 MISC. BOOK 108, PAGE 675

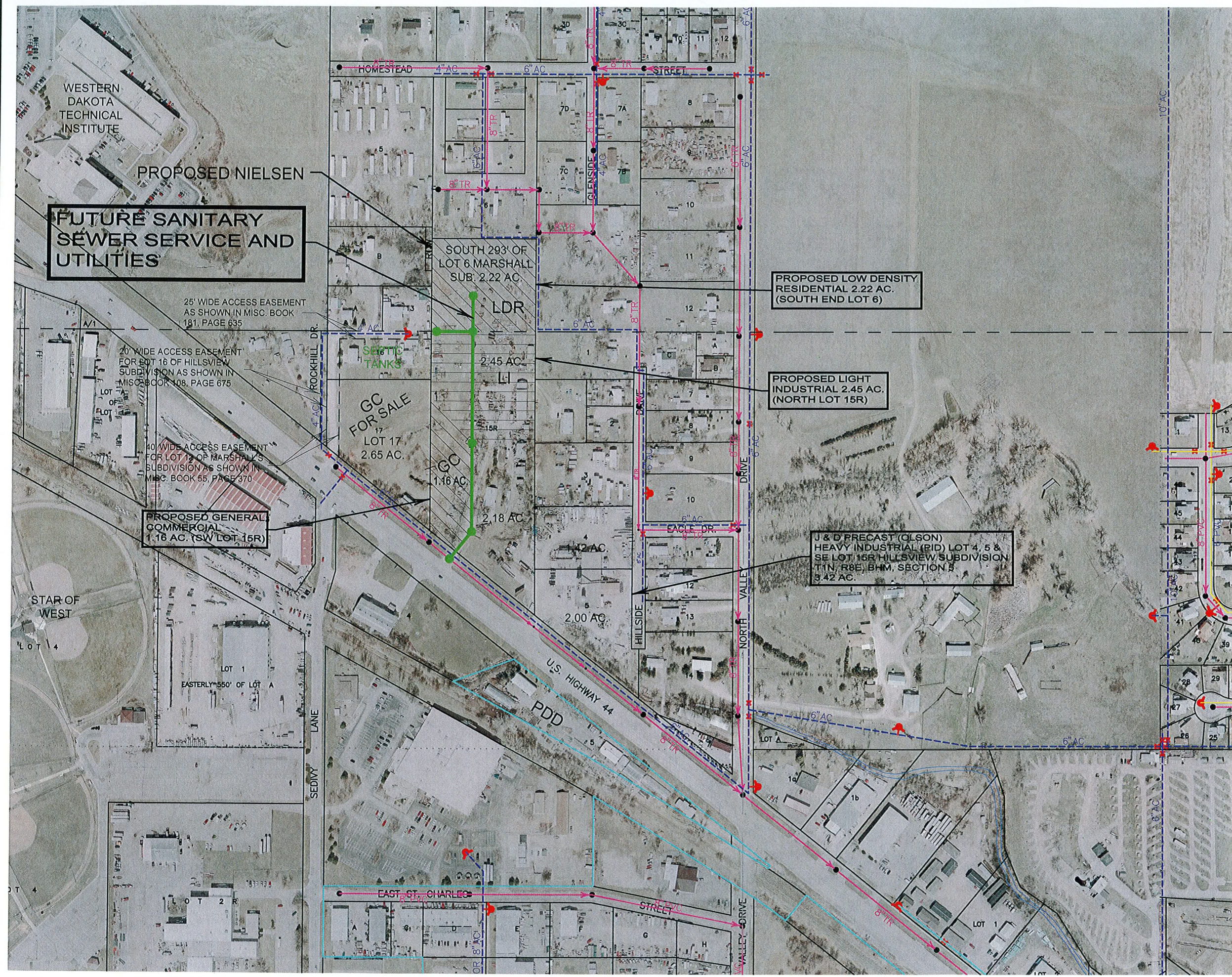
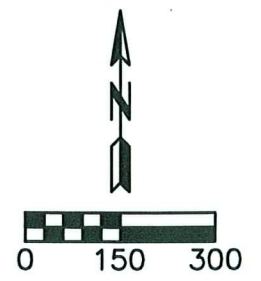
40' WIDE ACCESS EASEMENT
 FOR LOT 13 OF MARSHALL'S
 SUBDIVISION AS SHOWN IN
 MISC. BOOK 55, PAGE 370

ROYAL NIELSEN PROPERTY



1560 Concourse Drive
 Rapid City, SD 57703
 Phone: (605) 341-7800
 Fax: (605) 341-7864
 www.cetecengineering.com
 Date: 9/16/09

September 16, 2009 2:37:55 p.m.
Drawing: 09171.01 ZONING MAP.DWG (FOX) (\MAIN-DATA\CETEC\PROJECTS & PROPOSALS\09171.00 J & D PRECAST PLANNED DEVELOPMENT DRAWINGS\EXHIBITS V)



FUTURE SANITARY SEWER SERVICE AND UTILITIES

25' WIDE ACCESS EASEMENT AS SHOWN IN MISC. BOOK 181, PAGE 635

20' WIDE ACCESS EASEMENT FOR LOT 16 OF HILLSVIEW SUBDIVISION AS SHOWN IN MISC. BOOK 108, PAGE 675

40' WIDE ACCESS EASEMENT FOR LOT 13 OF MARSHALL'S SUBDIVISION AS SHOWN IN MISC. BOOK 65, PAGE 370

PROPOSED GENERAL COMMERCIAL 1.16 AC. (SW LOT 15R)

SOUTH 293' OF LOT 6 MARSHALL SUB. 2.22 AC.

PROPOSED LOW DENSITY RESIDENTIAL 2.22 AC. (SOUTH END LOT 6)

PROPOSED LIGHT INDUSTRIAL 2.45 AC. (NORTH LOT 15R)

J & D PRECAST (OLSON) HEAVY INDUSTRIAL (PID) LOT 4, 5 & SE LOT 15R HILLSVIEW SUBDIVISION T1N, R8E, B1M, SECTION 5 3.42 AC.

PROPOSED GENERAL COMMERCIAL 1.16 AC. (SW LOT 15R)

NIELSEN FUTURE SANITARY SEWER EXTENSION AND UTILITIES



1560 Concourse Drive
Rapid City, SD 57703
Phone: (605) 341-7800
Fax: (605) 341-7864
www.cetecengineering.com
Date: 9/16/09