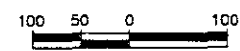


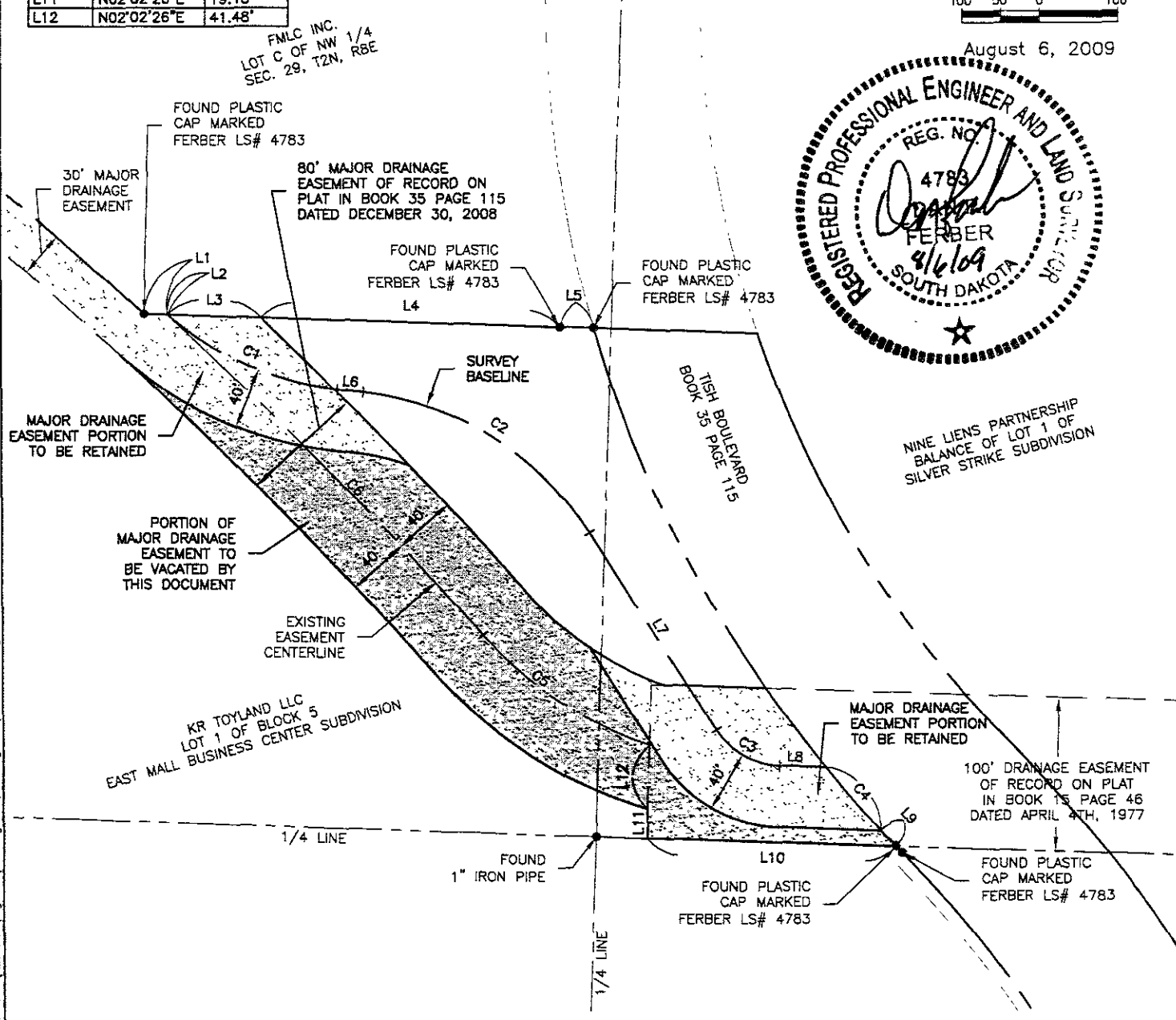
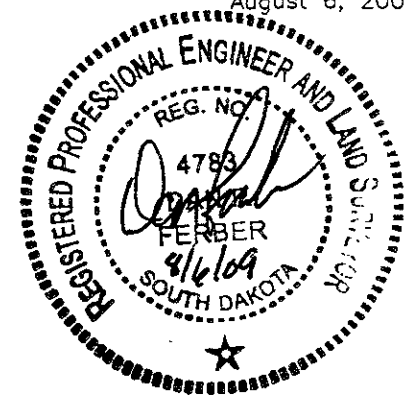
VACATION OF MAJOR DRAINAGE EASEMENT LOT 1 OF BLOCK 5 EAST MALL BUSINESS CENTER SUBDIVISION IN THE NORTH 1/2 OF SECTION 29, T2N, R8E, BHM RAPID CITY, PENNINGTON COUNTY, SOUTH DAKOTA

NUMBER	DIRECTION	DISTANCE
L1	S88°08'16"E	15.27'
L2	S88°08'16"E	0.09'
L3	S88°08'16"E	60.31'
L4	S88°08'16"E	194.78'
L5	S88°08'16"E	21.62'
L6	S83°33'42"E	16.83'
L7	S32°21'00"E	151.52'
L8	S88°10'01"E	29.95'
L9	S43°27'07"E	14.20'
L10	N88°10'19"W	161.29'
L11	N02°02'26"E	19.15'
L12	N02°02'26"E	41.48'

NUMBER	DELTA ANGLE	CHORD BEARING	R (FT)	L (FT)	LC (FT)
C1	34°59'31"	S66°03'57"E	200.00	122.15	120.26
C2	51°12'42"	S57°57'21"E	200.00	178.76	172.87
C3	55°49'02"	S60°15'31"E	50.00	48.71	48.81
C4	03°54'24"	S40°59'25"E	800.00	54.55	54.54
C5	29°55'39"	N56°26'18"W	250.00	130.58	129.10
C6	05°37'46"	N44°17'21"W	2972.00	292.01	291.89



August 6, 2009



FMLC INC.
LOT C OF NW 1/4
SEC. 29, T2N, R8E

NINE LIENS PARTNERSHIP
BALANCE OF LOT 1 OF
SILVER STRIKE SUBDIVISION

09-06-09 P:\09-103\AutoCAD\Figures\Drainage VAC Easement Rev.dwg Report Figure\09103\Drainage VAC Easement Rev.dwg

Ferber Engineering Company, Inc.
Civil Engineering • Water Resources • Transportation • Land Surveying
224 East Washington St., Rapid City, SD 57701 • Phone: (605) 343-4111

EXHIBIT A

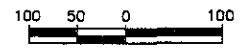
PROJECT NO.	09-103
FIGURE NO.	1

MAJOR DRAINAGE EASEMENT

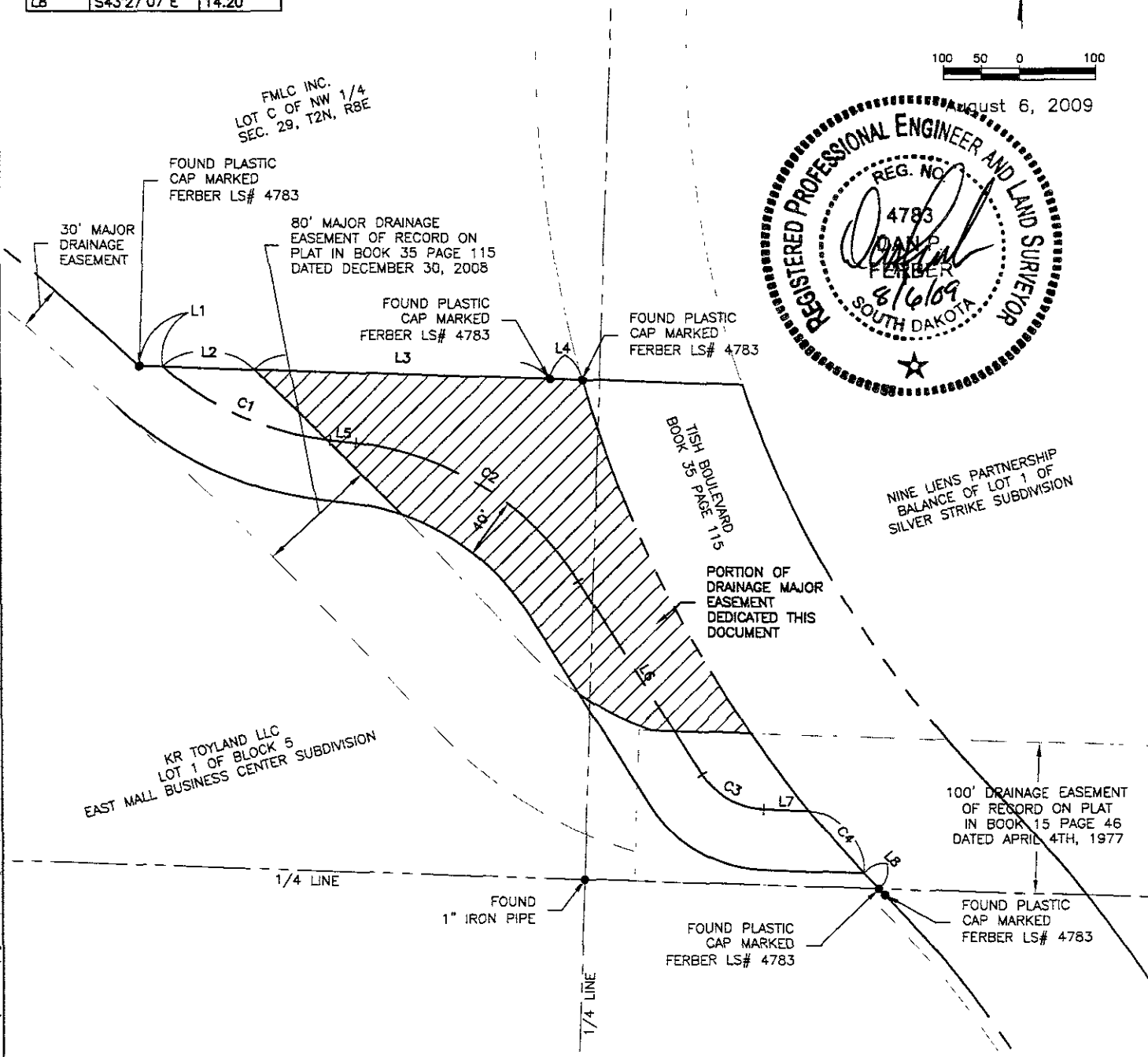
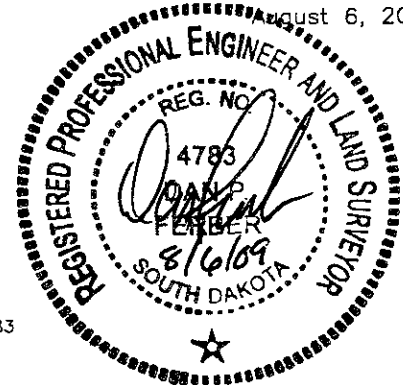
LOT 1 OF BLOCK 5 EAST MALL BUSINESS CENTER SUBDIVISION IN THE NORTH 1/2 OF SECTION 29, T2N, R8E, BHM RAPID CITY, PENNINGTON COUNTY, SOUTH DAKOTA

NUMBER	DIRECTION	DISTANCE
L1	S88°08'16"E	15.36'
L2	S88°08'16"E	60.31'
L3	S88°08'16"E	194.78'
L4	S88°08'16"E	21.62'
L5	S83°33'42"E	16.83'
L6	S32°21'00"E	151.52'
L7	S88°10'01"E	29.95'
LB	S43°27'07"E	14.20'

NUMBER	DELTA ANGLE	CHORD BEARING	R (FT)	L (FT)	LC (FT)
C1	34°59'31"	S66°03'57"E	200.00	122.15	120.26
C2	51°12'42"	S57°57'21"E	200.00	178.76	172.87
C3	55°49'02"	S60°15'31"E	50.00	48.71	46.81
C4	03°54'24"	S40°59'25"E	800.00	54.55	54.54



August 6, 2009



FMLC INC.
LOT C OF NW 1/4
SEC. 29, T2N, R8E

FOUND PLASTIC
CAP MARKED
FERBER LS# 4783

30' MAJOR
DRAINAGE
EASEMENT

80' MAJOR DRAINAGE
EASEMENT OF RECORD ON
PLAT IN BOOK 35 PAGE 115
DATED DECEMBER 30, 2008

FOUND PLASTIC
CAP MARKED
FERBER LS# 4783

FOUND PLASTIC
CAP MARKED
FERBER LS# 4783

TISH BOULEVARD
BOOK 35 PAGE 115

NINE LIENS PARTNERSHIP
BALANCE OF LOT 1 OF
SILVER STRIKE SUBDIVISION

PORTION OF
DRAINAGE MAJOR
EASEMENT
DEDICATED THIS
DOCUMENT

KR TOYLAND LLC
LOT 1 OF BLOCK 5
EAST MALL BUSINESS CENTER SUBDIVISION

100' DRAINAGE EASEMENT
OF RECORD ON PLAT
IN BOOK 15 PAGE 46
DATED APRIL 4TH, 1977

FOUND
1" IRON PIPE

FOUND PLASTIC
CAP MARKED
FERBER LS# 4783

FOUND PLASTIC
CAP MARKED
FERBER LS# 4783

1/4 LINE

1/4 LINE

08-08-09 P:\09-103\AutoCAD\Figures\Drainage Report\Figures\09103\Drainage Easement Rev.dwg