

EROSION CONTROL REPORT

- PROJECT DESCRIPTION:**
THIS PROJECT CONSISTS OF THE CONSTRUCTION OF A NEW, 40,680 SQUARE FOOT AUTO DEALERSHIP WITH CONCRETE GRADING, CONCRETE PAVEMENT, CURBS AND GUTTER, STORM SEWER AND INLETS, WATER MAIN AND SERVICES, AND SANITARY SEWER SERVICE.
- EXISTING SITE CONDITIONS:**
UPLAND PRAIRIE VEGETATED WITH NATIVE GRASSES AND TREES IN DRAINAGE AREAS. EXISTING TOPOGRAPHIC TERRAIN CONTAINS SLOPES FROM 1:1 TO 1:10. PROJECT IS CONTAINED ENTIRELY WITHIN THE BOX ELDER CREEK WATERSHED.
- WETLANDS:**
ARE WETLANDS AN ISSUE? YES. FERBER ENGINEERING COMPANY HAS PREVIOUSLY MAPPED JURISDICTIONAL WETLANDS FOR THE CUT AND FILL AREAS. NO FILL WILL BE PLACED IN THE MAPPED WETLANDS. WORKER BEHIND THE CHANNEL RELOCATION WILL AFFECT A DESIGNATED WATER OF THE STATE. A 404 PERMIT WILL BE REQUIRED. DO ANY OTHER JURISDICTIONAL AUTHORITIES (SHPD OR GPP) NEED TO REVIEW THESE PLANS? NO.
- ADJACENT AREAS:**
THE NORTH BOUNDARY IS ADJACENT TO UNDEVELOPED PRAIRIE. THE SOUTH BOUNDARY IS EAST MAIN DRIVE. THE EAST BOUNDARY IS TISH BOULEVARD AND THE WEST BOUNDARY IS ADJACENT TO LAND THAT HAS RECENTLY BEEN GRADED FOR FUTURE DEVELOPMENT.
- SOILS:**
PREDOMINANT SOILS ARE:
SANDY FAT CLAY AND FAT CLAY.
- AREA AND VOLUME:**
AREA IS 10.25 ACRES. VOLUME IS APPROXIMATE. 28,000 CU YDS.
- EROSION AND SEDIMENT CONTROL MEASURES:**
THE EROSION CONTROL PLAN SHOWS THE TYPE AND LOCATION OF THE EROSION AND SEDIMENT CONTROL MEASURES FOR THE GRADING OF THIS SITE.
- AREA FOR STOCKPILES AND STORAGE:**
TOPSOIL STOCKPILES/BERMS SHALL BE PLACED AS SHOWN ON THIS EROSION CONTROL PLAN. EROSION CONTROL MEASURES SHALL BE IMPLEMENTED AROUND THE TOPSOIL STOCKPILES/BERMS.
- CONSTRUCTION SCHEDULE:**
INSTALL EROSION AND SEDIMENT CONTROL MEASURES
(CONSTRUCTION ENTRANCES, TOPSOIL BERMS, SILT FENCE, INLET PROTECTION): AUGUST 17, 2008 - SEPTEMBER 4, 2009
SITE AND BUILDING CONSTRUCTION: AUGUST 16, 2008 - AUGUST 4, 2010
- SOIL SURFACE STABILIZATION PRACTICES:**
AFTER CONSTRUCTION BEGINS, SOIL SURFACE STABILIZATION SHALL BE APPLIED WITHIN 14 DAYS TO ALL DISTURBED AREAS THAT MAY NOT BE AT FINAL GRADE BUT WILL REMAIN DORMANT (UNDISTURBED) FOR PERIODS LONGER THAN AN ADDITIONAL 21 CALENDAR DAYS. WITHIN 14 DAYS AFTER FINAL GRADE IS REACHED ON ANY PORTION OF THE SITE, PERMANENT OR TEMPORARY SOIL SURFACE STABILIZATION SHALL BE APPLIED TO DISTURBED AREAS AND SOIL STOCKPILES.
- PERMANENT STABILIZATION MEASURES:**
HIGH FLOW SILT FENCE WILL BE UTILIZED TO PREVENT RUN-OFF STORM WATER FROM LEAVING THE CONSTRUCTION SITE. ALL EXISTING AND CONSTRUCTED DRAINAGE FACILITIES WILL BE PROPERLY PROTECTED DURING CONSTRUCTION.
- STORM WATER MANAGEMENT CONSIDERATIONS:**
STORM WATER COMING OFF THE SITE WILL BE DIRECTED TO EXISTING DRAINAGES AND WILL BE FILTERED THROUGH SEDIMENT CONTROL, MATLES OR SILT FENCE PRIOR TO LEAVING THE SITE.
- MAINTENANCE:**
INSPECTION OF EROSION AND SEDIMENT CONTROL MEASURES SHOULD BE SCHEDULED BI-WEEKLY AND FOLLOWING ANY STORM EVENT OF 1/2 INCH OR GREATER. ALL MEASURES SHALL BE MAINTAINED IN GOOD WORKING ORDER. INSPECTION AND MAINTENANCE PROCEDURES SHALL CONTINUE UNTIL THE DISTURBED AREAS ACHIEVE FINAL STABILIZATION. ANY ACCUMULATED SEDIMENT SHALL BE REMOVED TO MAINTAIN STORAGE CAPACITY.
- SPILL CONTROL PRACTICES:**
CHEMICAL AND PETROLEUM PRODUCT SPILLS OF TOXIC OR HAZARDOUS MATERIAL SHALL BE REPORTED TO THE STATE OR LOCAL GOVERNMENT AGENCY. ALL SPILLS SHALL BE CLEANED UP IMMEDIATELY AFTER DISCOVERY.
- SPILL PREVENTION:**
PETROLEUM PRODUCTS. ON-SITE CONSTRUCTION EQUIPMENT SHALL BE MONITORED FOR LEAKS & RECEIVE REGULAR PREVENTIVE MAINTENANCE.
A) REGULARLY PICKUP AND DISPOSE OF GARBAGE AND WASTE MATERIAL.
B) MAKE SURE ALL EQUIPMENT AND RELATED PROCESSES ARE WORKING PROPERLY AND PREVENTATIVE MAINTENANCE IS KEPT UP WITH ON BOTH.
C) ROUTINELY INSPECT EQUIPMENT AND PROCESSES FOR LEAKS OR CONDITIONS THAT COULD LEAD TO DISCHARGES OF CHEMICALS OR CONTACT OF STORM WATER WITH RAW MATERIALS INTERMEDIATE PRODUCTS OR PRODUCTS USED ON SITE.
D) ASSURE ALL SPILL CLEAN UP PROCEDURES ARE UNDERSTOOD BY EMPLOYEES. TRAINING EMPLOYEES ON PROPER CLEAN UP PROCEDURES SHALL BE IMPLEMENTED.
E) DESIGNATE SEPARATE AREAS OF THE SITE FOR AUTO PARKING, VEHICLE REFUELING, AND ROUTINE MAINTENANCE.
F) CLEAN UP LEAKS, DRIPS, AND OTHER SPILLS IMMEDIATELY.
G) COVER AND MAINTAIN DUMPSTERS AND WASTE RECEPTACLES.
H) STORE CONTAINERS, DRUMS, AND BAGS AWAY FROM DIRECT TRAFFIC ROUTES TO PREVENT ACCIDENTAL SPILLS.
I) STACK CONTAINERS ACCORDING TO MANUFACTURER'S INSTRUCTIONS TO AVOID DAMAGING THE CONTAINERS FROM IMPROPER WEIGHT DISTRIBUTION.
J) STORE CONTAINERS ON PALLETS OR SIMILAR DEVICES TO PREVENT CORROSION OF CONTAINERS THAT RESULTS FROM CONTAINERS COMING IN CONTACT WITH MOISTURE ON THE GROUND.
K) STORE TOXIC OR HAZARDOUS LIQUIDS WITHIN CURBED AREAS OR SECONDARY CONTAINERS.
L) ASSIGN RESPONSIBILITY OF HAZARDOUS MATERIAL INVENTORY TO A LIMITED NUMBER OF PEOPLE WHO ARE TRAINED TO HANDLE SUCH MATERIALS. IN THE EVENT OF SPILLS OF ANY DANGEROUS OR HAZARDOUS MATERIAL, NOTIFY THE CITY OF RAPID CITY PUBLIC WORKS DEPARTMENT.

- THE FOLLOWING PREVENTATIVE STRATEGIES ARE RECOMMENDED WHERE TOXIC OR HAZARDOUS FLUIDS ARE COMMONLY PRESENT:
- IDENTIFY ALL EQUIPMENT THAT MAY BE EXPOSED TO STORM WATER, POLLUTANTS THAT MAY BE GENERATED AND POSSIBLE SOURCES OF LEAKS OR DISCHARGES.
 - PERFORM REGULAR MAINTENANCE OF EACH PIECE OF EQUIPMENT TO CHECK FOR PROPER OPERATION, LEAKS, MALFUNCTIONS, AND EVIDENCE OF LEAKS OR DISCHARGE (STAINS). DEVELOP A PROCEDURE FOR SPILL REPORTING, CLEAN UP AND REPAIR.
 - DRAIN OR REPLACE MOTOR OIL OR OTHER AUTOMOTIVE FLUIDS IN AN AREA AWAY FROM STREAMS, STORM, OR SANITARY SEWER INLETS. COLLECT SPENT FLUIDS AND RECYCLE OR DISPOSE OF THEM PROPERLY.
 - IN FUELING AREAS, CLEAN UP SPILLS WITH DRY CLEAN UP METHODS (ABSORBENTS).
 - MAKE SURE EMPLOYEES ARE TRAINED IN SPILL PREVENTION PRACTICES AND ADHERE TO THEM.
- (16) **SITE PLAN:**
THE EROSION CONTROL PLAN SHOWS THE EROSION CONTROL DEVICES TO BE INSTALLED. THESE DEVICES SHALL BE INSTALLED AS PER CITY OF RAPID CITY STANDARD DETAILS AND SPECIFICATIONS.
- (17) **NOTICE OF INTENT (PERMIT NO. 08-1430-A01):**
CONTRACTOR IS RESPONSIBLE FOR FILING A NOTICE OF INTENT (NOI) WITH THE SURFACE WATER DISCHARGE PROGRAM OF THE SOUTH DAKOTA DEPARTMENT OF ENVIRONMENT AND NATURAL RESOURCES (DENR). THE PRIMARY RESPONSIBLE PARTY IS REQUIRED TO FILE A NOTICE OF TERMINATION WITH DENR WHEN THE SITE HAS REACHED FINAL STABILIZATION.

OWNER'S CERTIFICATION

THIS EROSION AND SEDIMENT CONTROL PLAN NARRATIVE AND EROSION AND SEDIMENT CONTROL PLAN APPEARS TO FULFILL THE TECHNICAL CRITERIA AND THE CRITERIA FOR EROSION CONTROL AND THE REQUIREMENTS FOR THE CITY OF RAPID CITY. I UNDERSTAND THAT ADDITIONAL EROSION AND SEDIMENT CONTROL MEASURES MAY BE NEEDED IF UNFORESEEN EROSION PROBLEMS OCCUR OR IF THE SUBMITTED PLAN DOES NOT FUNCTION AS INTENDED. THE REQUIREMENTS OF THIS PLAN SHALL RUN WITH THE LAND AND BE THE OBLIGATION OF THE RESPONSIBLE PARTY UNTIL SUCH TIME AS THE PLAN IS PROPERLY COMPLETED, MODIFIED OR VOIDED.

KEVIN RANDALL (OWNER) _____ DATE _____

(GENERAL CONTRACTOR) _____ DATE _____

ENGINEER'S CERTIFICATION

I HEREBY CERTIFY THAT THESE PLANS WERE PREPARED BY ME OR UNDER MY DIRECT SUPERVISION AND THAT I AM A DULY REGISTERED ENGINEER UNDER THE LAWS OF SOUTH DAKOTA.

DAN FERBER, P.E., L.S. (ENGINEER) _____ DATE _____

EROSION AND SEDIMENT CONTROL NOTES:

- WORKING WITHIN OR CROSSING A WATERWAY:
- CONSTRUCTION VEHICLES SHALL BE KEPT OUT OF A WATERWAY TO THE MAXIMUM EXTENT PRACTICABLE. WHERE BY-PASSING WORK IS NECESSARY, STEPS SUCH AS TEMPORARY CHANNEL DIMENSIONS, SHALL BE TAKEN TO STABILIZE THE WORK AREA DURING CONSTRUCTION TO CONTROL EROSION. THE CHANNEL (INCLUDING BED AND BANKS) SHALL BE RE-STABILIZED IMMEDIATELY AFTER BY-PASSING WORK IS COMPLETED.
 - WHERE AN ACTIVE-FLOWING WATERCOURSE MUST BE CROSSED REGULARLY BY CONSTRUCTION VEHICLES, A TEMPORARY CROSSING SHALL BE PROVIDED. TWO PRIMARY METHODS ARE AVAILABLE: A CULVERTED CROSSING AND A STREAM FORD.
 - A PERMIT IS REQUIRED TO PLACE FILL IN A WATERWAY UNDER SECTION 404 OF THE CLEAN WATER ACT. THE OFFICE OF ENGINEERS OFFICE IN PIERRE, SOUTH DAKOTA, SHALL BE CONTACTED ABOUT THE REQUIREMENTS FOR OBTAINING A 404 PERMIT.

THE MINIMUM LOCATIONS FOR POLLUTION CONTROL DEVICES ARE SPECIFIED ON THIS PLAN. IT IS THE CONTRACTOR'S RESPONSIBILITY TO MAINTAIN EROSION AND POLLUTION CONTROL THROUGHOUT THE PROJECT. THE CONTRACTOR IS RESPONSIBLE TO DETERMINE ANY ADDITIONAL DEVICES AND LOCATIONS NECESSARY FOR POLLUTION CONTROL IN ACCORDANCE WITH THE SDOORR REGULATIONS.

THE CONTRACTOR SHALL INSPECT ALL EROSION AND WATER POLLUTION CONTROL DEVICES ONCE A WEEK AND WITHIN 24 HOURS OF EVERY RAINFALL GREATER THAN 1/2 INCH. THE CONTRACTOR SHALL BE RESPONSIBLE FOR MAINTENANCE TO INCLUDE BUT NOT LIMITED TO: REPAIR, NOISE, JACKING, AND REPLACEMENT OF ALL TEMPORARY EROSION CONTROL AND WATER POLLUTION CONTROL DEVICES UNTIL PERMANENT EROSION CONTROL IS ESTABLISHED AND THE PROJECT HAS BEEN COMPLETED AND ACCEPTED.

STANDARD DETAILS FOR EROSION CONTROL ITEMS ARE INCLUDED FOR INFORMATIONAL PURPOSES. PAYMENT FOR EROSION CONTROL ITEMS SHALL NOT NECESSARILY BE ACCORDING TO NOTES ON THE STANDARD DETAILS.

EROSION AND SEDIMENT CONTROL NOTES (CONT.):

A STABILIZED CONSTRUCTION ENTRANCE SHALL BE INSTALLED IF DEMOLITION AND GRADING SEQUENCING WILL RESULT IN THE POTENTIAL FOR MATERIAL TO BE "TRACKED" ON TO THE SURROUNDING STREETS.

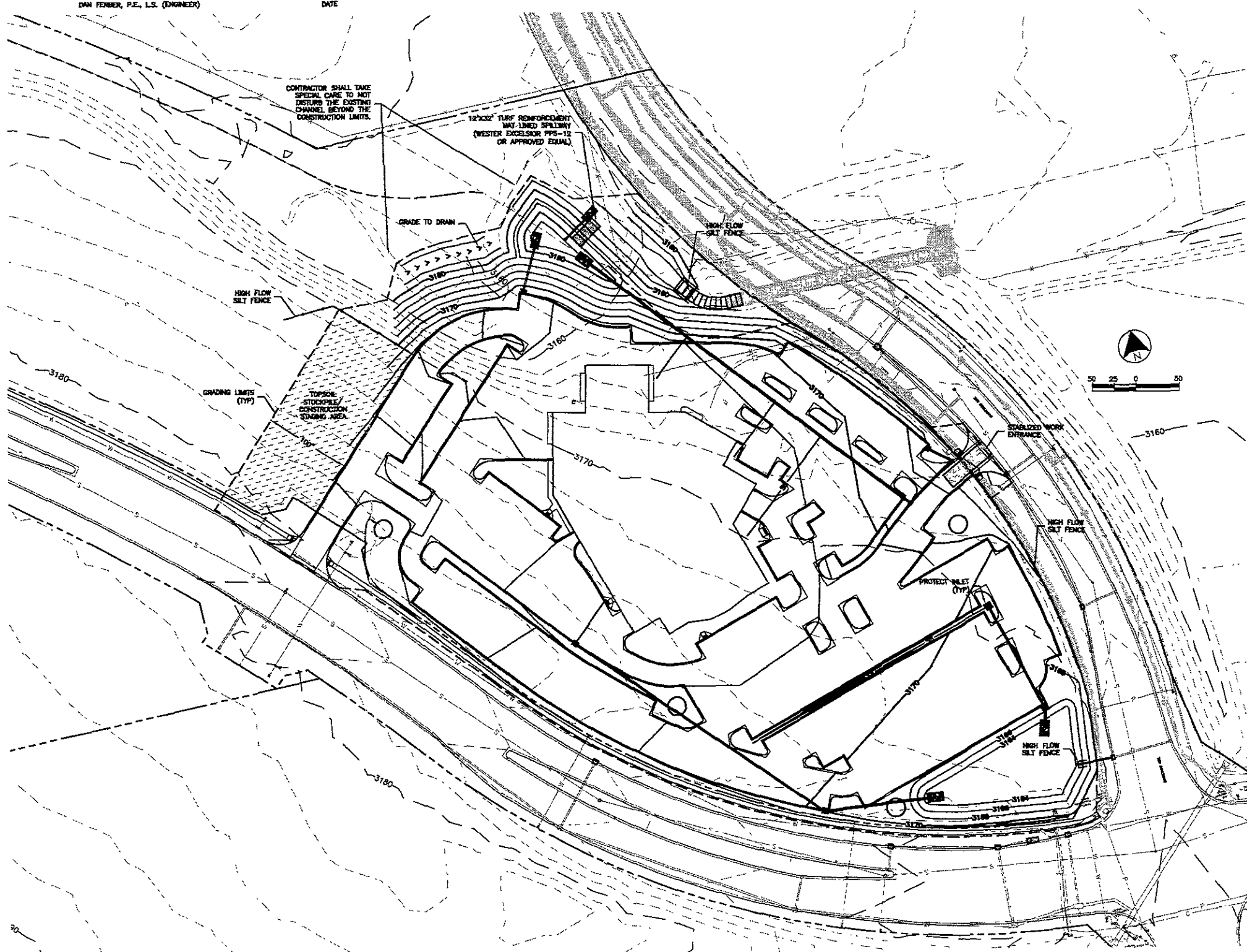
AFTER CONSTRUCTION BEGINS, SOIL SURFACE STABILIZATION SHALL BE APPLIED WITHIN 14 DAYS TO ALL DISTURBED AREAS THAT MAY NOT BE AT FINAL GRADE BUT WILL REMAIN DORMANT (UNDISTURBED) FOR PERIODS LONGER THAN AN ADDITIONAL 21 CALENDAR DAYS. WITHIN 14 DAYS AFTER FINAL GRADE IS REACHED ON ANY PORTION OF THE SITE, PERMANENT OR TEMPORARY SOIL SURFACE STABILIZATION SHALL BE APPLIED TO DISTURBED AREAS AND SOIL STOCKPILES.

THE EROSION CONTROL MEASURES SHALL REMAIN IN PLACE UNTIL THE SITE IS SURFACED AND VEGETATION IS ESTABLISHED ACCORDING TO THE LANDSCAPING PLAN.

THE EROSION CONTROL MEASURES IN THIS PLAN SHALL SERVE AS A GUIDE ONLY. THE CONTRACTOR SHALL CONTACT THE SOUTH DAKOTA DEPARTMENT OF ENVIRONMENT AND NATURAL RESOURCES (805-773-3361) TO DETERMINE IF A PERMIT IS NEEDED FOR THIS PROJECT, AND WHAT, IF ANY POLLUTION CONTROL MEASURES MUST BE TAKEN.

THE CONTRACTOR IS RESPONSIBLE FOR OBTAINING AN "EROSION & SEDIMENT CONTROL PERMIT" FROM THE CITY OF RAPID CITY AS REQUIRED BY THE CITY ORDINANCE.

THE CONTRACTOR IS ADVISED THAT SEVERAL AGENCIES HAVE THE AUTHORITY TO "STOP WORK" IF THE POLLUTION AND SEDIMENT PREVENTION CONTROL IS NOT IMPLEMENTED OR IS NOT EFFECTIVE IN THE PREVENTION OF ENVIRONMENTAL DAMAGE FROM CONSTRUCTION ACTIVITIES. NO COMPENSATION WILL BE FORTHCOMING FOR "TIME LOST" DUE TO A "STOP WORK" ORDER.



RECEIVED
AUG 06 2009
Rapid City Growth
Management Department

TOYOTA BLACK HILLS

Ferber Engineering Company, Inc.

Professional Engineering Firm
REG. NO. 4783
DAN P. FERBER
SOUTH DAKOTA

785 East Wabasha St. Rapid City, SD 57701 • P: 605.372.1000

BLACK HILLS TOYOTA
NEW DEALERSHIP FACILITY

RAPID CITY, SD

JOB NUMBER: 08-1430-A01
DATE: 07/20/09

REVISED	BY	DATE
01	SO SUBMITTAL	
02	THIS CD SUBMITTAL	
03	SO SUBMITTAL	
04	THIS CD SUBMITTAL	
05	SO SUBMITTAL	

EROSION CONTROL SHEET C1.04