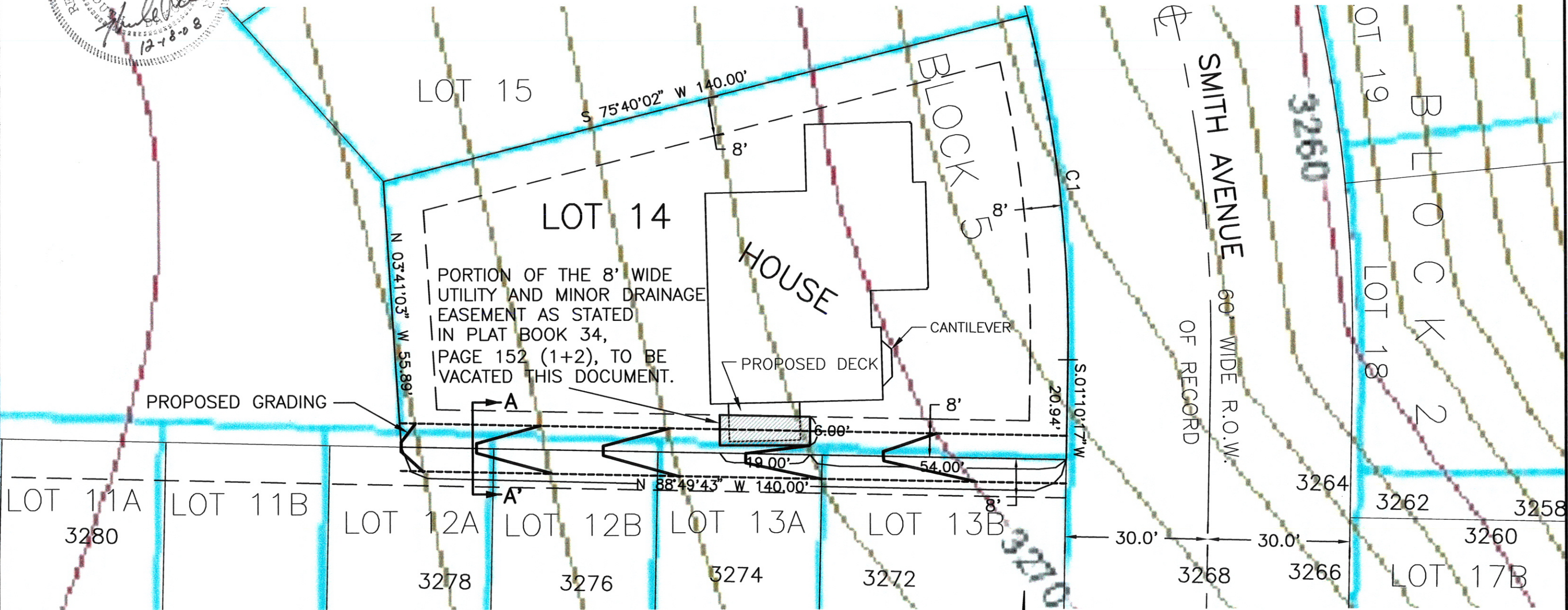


"EXHIBIT A"

# VACATION OF A PORTION OF THE 8' WIDE UTILITY AND MINOR DRAINAGE EASEMENT, LOT 14 OF BLOCK 5, PARK MEADOWS SUBDIVISION

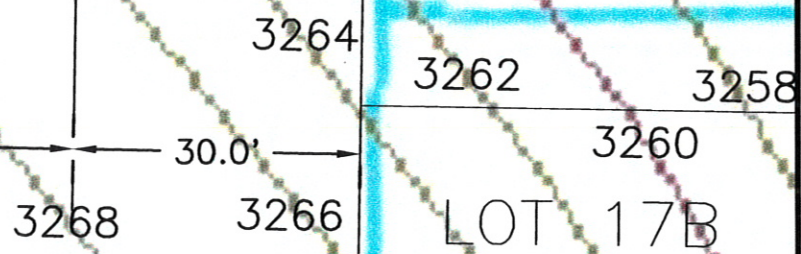
LOCATED IN THE SE1/4 OF THE NE1/4,  
SECTION 7, T1N, R8E, B.H.M.,  
RAPID CITY, PENNINGTON COUNTY, SOUTH DAKOTA

08VE027



PORTION OF THE 8' WIDE UTILITY AND MINOR DRAINAGE EASEMENT AS STATED IN PLAT BOOK 34, PAGE 152 (1+2), TO BE VACATED THIS DOCUMENT.

SMITH AVENUE  
60' WIDE R.O.W.  
OF RECORD



TOPOGRAPHIC INFORMATION SHOWN HEREON WAS GRAPHICALLY SCALED FROM GIS DATA AND NOT FIELD VERIFIED.

CURVE	LENGTH	RADIUS	DELTA ANGLE	CHORD BEARING	CHORD DISTANCE
C1	73.06	270.00	15°30'15"	S 06°34'51" E	72.84

