

RECEIVED

VACATION OF A PORTION OF 8' UTILITY AND DRAINAGE EASEMENTS ON LOTS 1 AND 2 OF LOT C OF BLOCK 5 OF OWEN MANN TRACT

FEB 09 2009

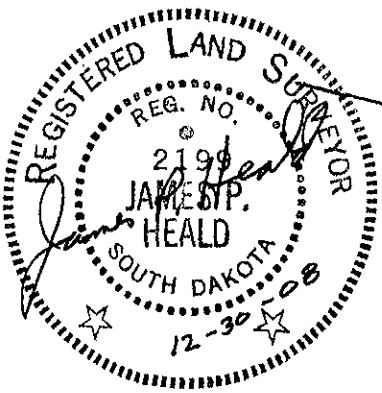
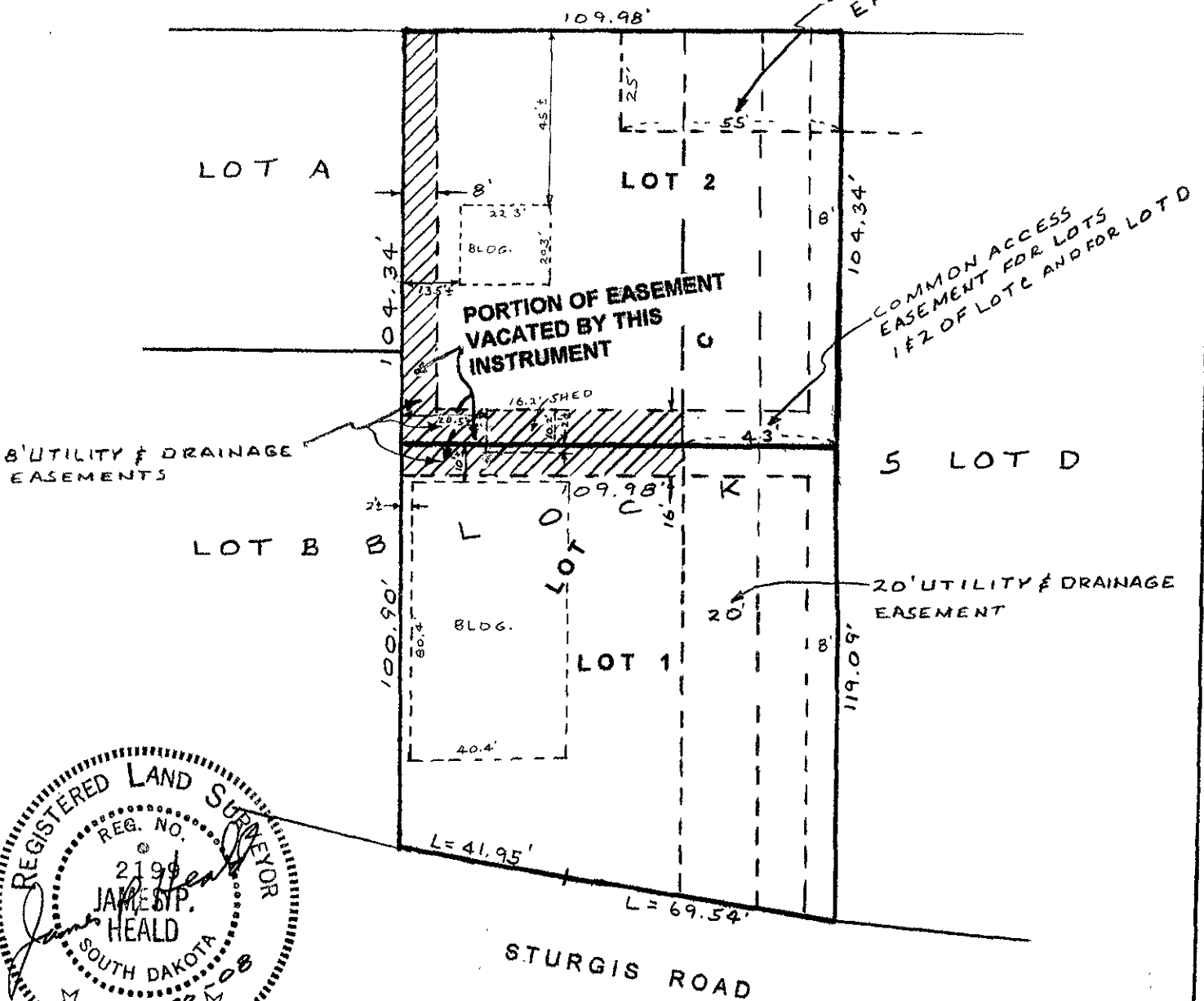
Located in SE¼ of SE¼ of Section 33, T2N, R7E, BHM, Rapid City, Pennington County, South Dakota.

Rapid City Growth Management Department

Plat of Lots 1 and 2 of Lot C of Block 5 of Owen Mann Tract recorded in Plat Book 18, Page 86.

SCALE 1" = 40'  
DECEMBER 30, 2008  
REVISED 1-30-09

WEST RAPID STREET



HEALD LAND SURVEYING  
 2218 Lockwood Drive  
 Rapid City, SD 57702-4266  
 (605) 343-1820 Fax 721-1336  
 Toll Free (866) 654-4527