

EXHIBIT "A"

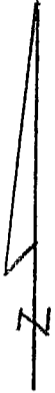
10' WIDE EASEMENT FOR UNDERGROUND POWER LINE IN

LOTS 1 AND 2 OF SE¼ OF NE¼ OF SECTION 3, T1N, R7E, BHM AND IN TRACT 10A OF RAPID CITY GREENWAY TRACTS

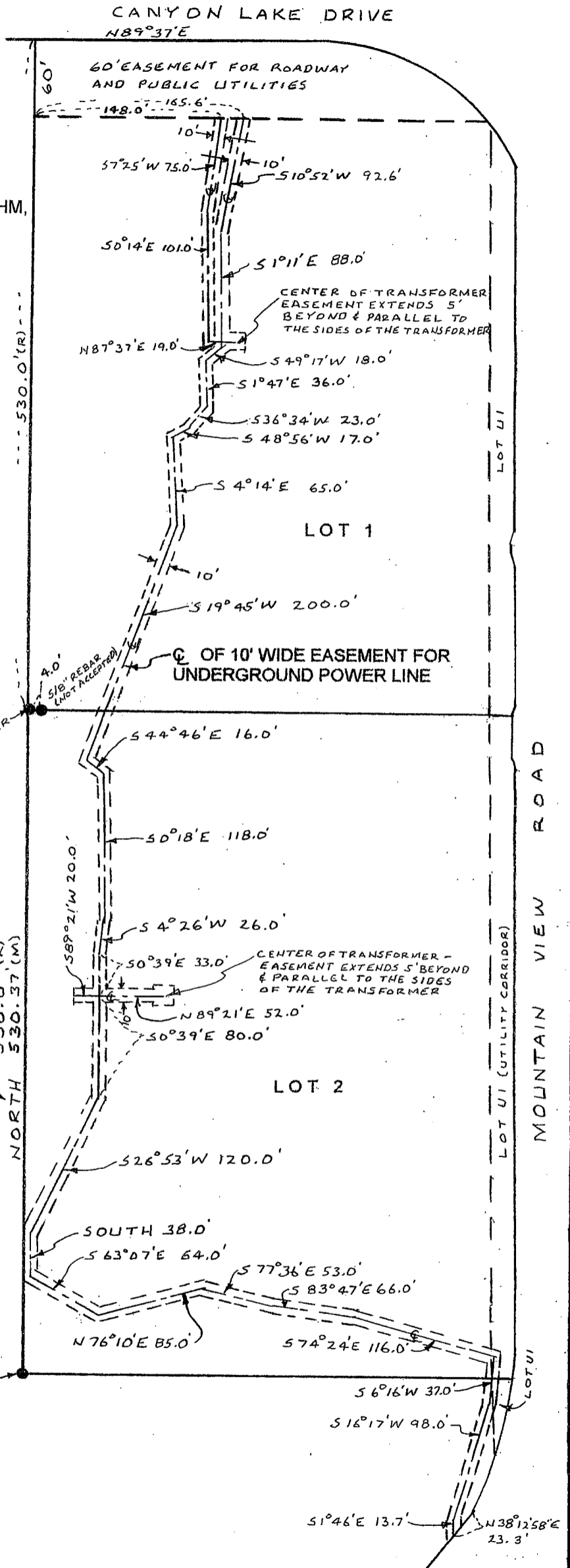
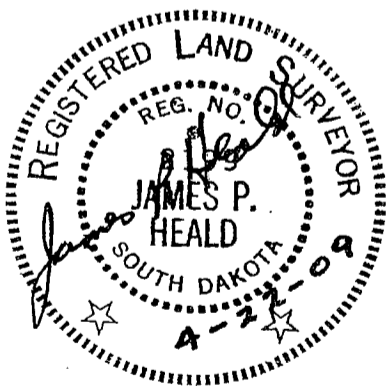
Located in SE¼ of NE¼ of Section 3, T1N, R7E, BHM, Rapid City, Pennington County, South Dakota.

LEGEND:

- Found survey monument
- (R) Recorded in previous document or plat.
- (M) Measured in this survey.



SCALE 1"=100'
APRIL 17, 2009



TRACT 10A