

BRITTON ENGINEERING & LAND SURVEYING, INC.  
 8035 BLACK HAWK ROAD, SUITE 5, PO BOX 649  
 BLACK HAWK, SD 57218  
 PH. (605) 716-7988

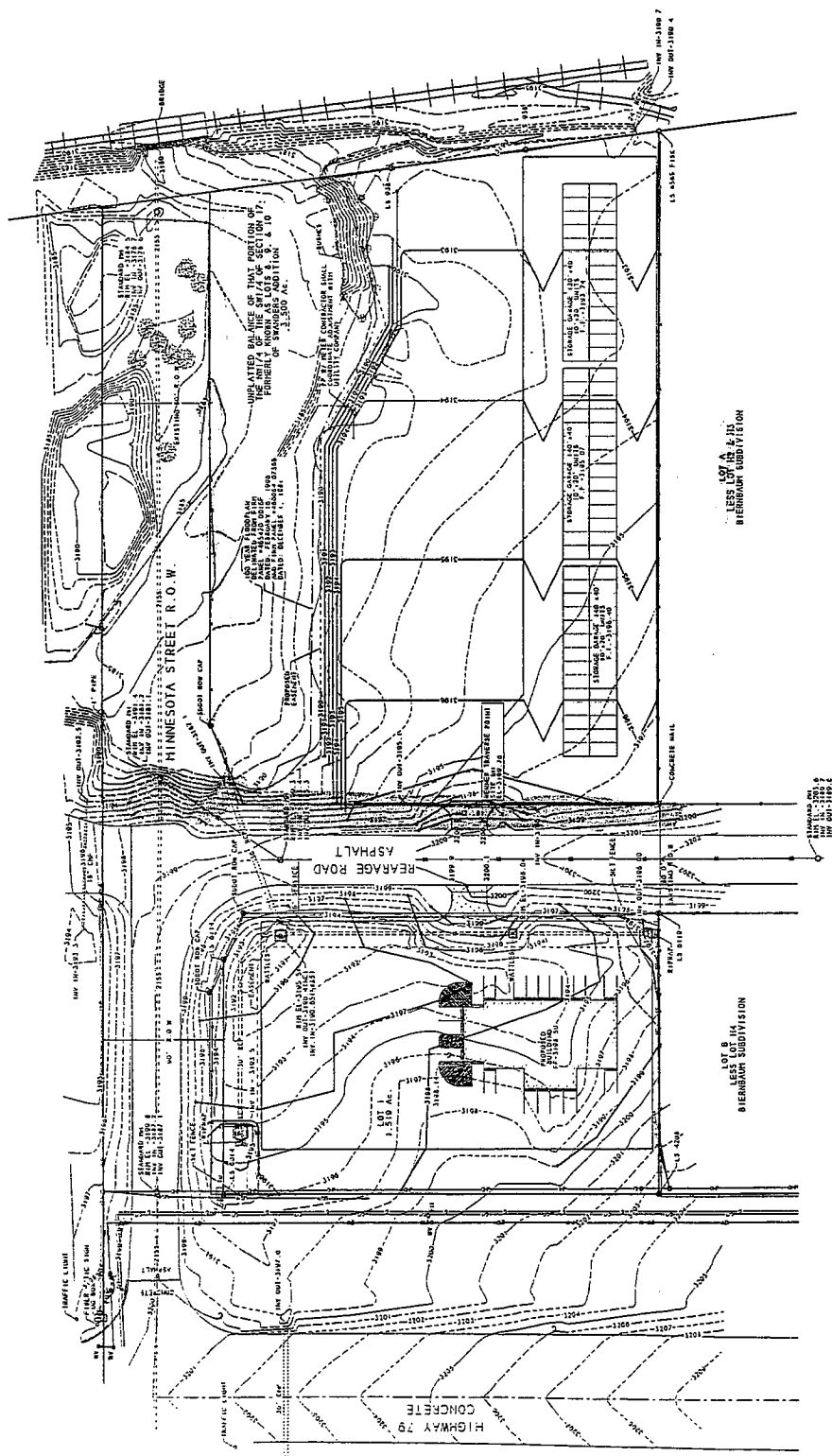
LOT 1 OF SOUTH YARD SUBDIVISION &  
 OF THE UNPLATTED BALANCE OF THAT PORTION  
 SEC 17, T1N, R0E, BHM, RAPID CITY  
 PENNINGTON COUNTY, SOUTH DAKOTA

GRADING PLAN  
 BRIAN WIDMEIER

Project No.	627229
Client	
Drawn by	
Checked by	
Date	
Scale	
Sheet No.	3
Total Sheets	4



ALL ELEVATIONS ARE TO FINISHED GRADE  
 UNLESS OTHERWISE NOTED  
 THE UNPLATTED BALANCE OF THAT PORTION  
 SEC 17, T1N, R0E, BHM, RAPID CITY  
 PENNINGTON COUNTY, SOUTH DAKOTA



C:\GRC\0001\00AWIDMEIER\2009\SHEET 3.GXD