

LOTS 1-5 OF BLOCK 3, HOMESTEAD PLAZA SUBDIVISION AND DEDICATED RIGHT-OF-WAY OF BIG SKY DRIVE

(formerly A Portion of Tract A of F&N Subdivision &
the Balance of the SE1/4 of the NW1/4)

LOCATED IN THE NE1/4 OF THE SW1/4
& THE SE1/4 OF THE NW1/4)

SECTION 3, T1N, R8E, BHM

RAPID CITY, PENNINGTON COUNTY, SOUTH DAKOTA

RECEIVED

SEP 12 2008

Rapid City Growth
Management Department

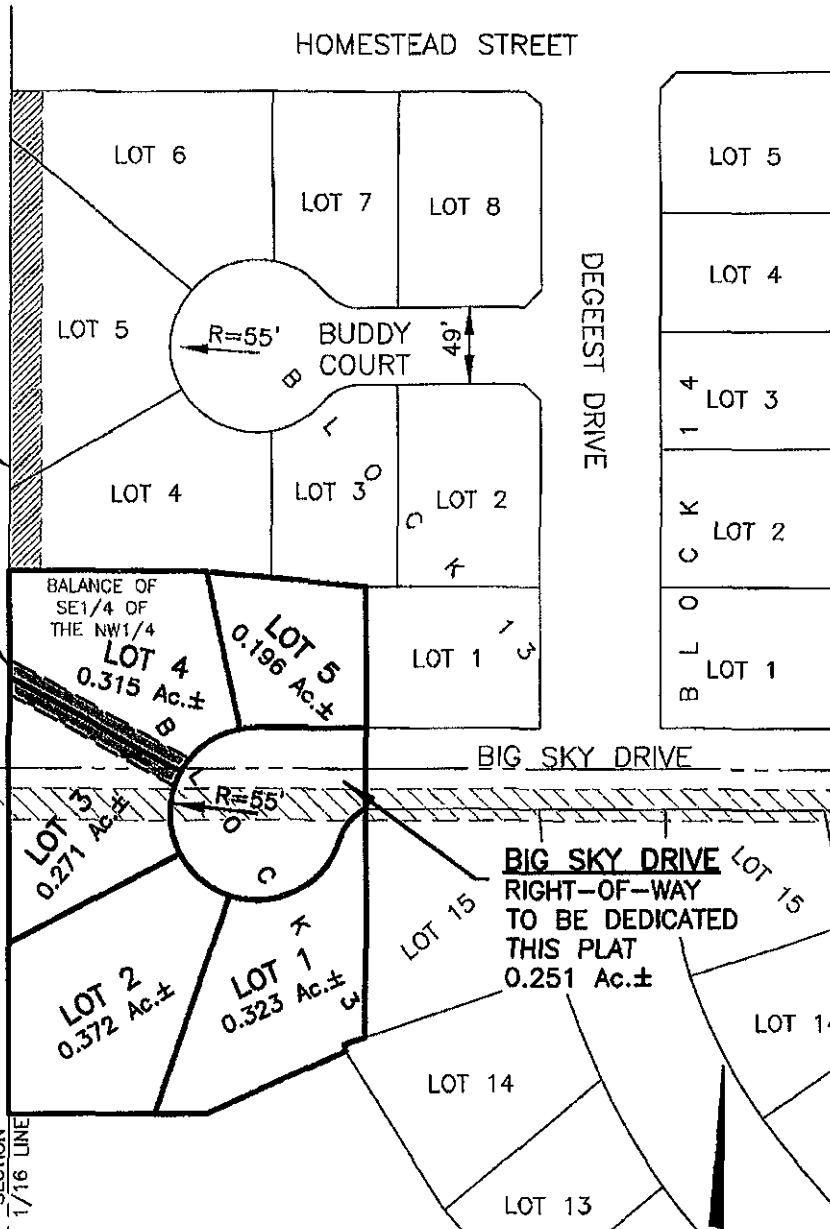
BALANCE OF
E1/2 OF THE SW1/4 OF
THE NW1/4

20' WIDE MAJOR DRAINAGE
EASEMENT AS SHOWN IN
PLAT BOOK 31, PAGE 131

WATER LINE
EASEMENT TO
BE CREATED
THIS PLAT

PERMANENT WATERLINE AND
SANITARY SEWER LINE
EASEMENT AS SHOWN IN
MISC. BOOK 58, PAGE 6417

BALANCE OF
TRACT A OF
F&N SUBDIVISION



Renner & Associates, LLC.

616 Sixth St. * Rapid City, SD 57701 * 605/721-7310
FAX: 605/721-7313 * E-MAIL: Gary@RennerAssoc.com
* Spearfish 605/717-0016 *

JULY 2, 2008
SCALE: NTS



CITY HALL 1903