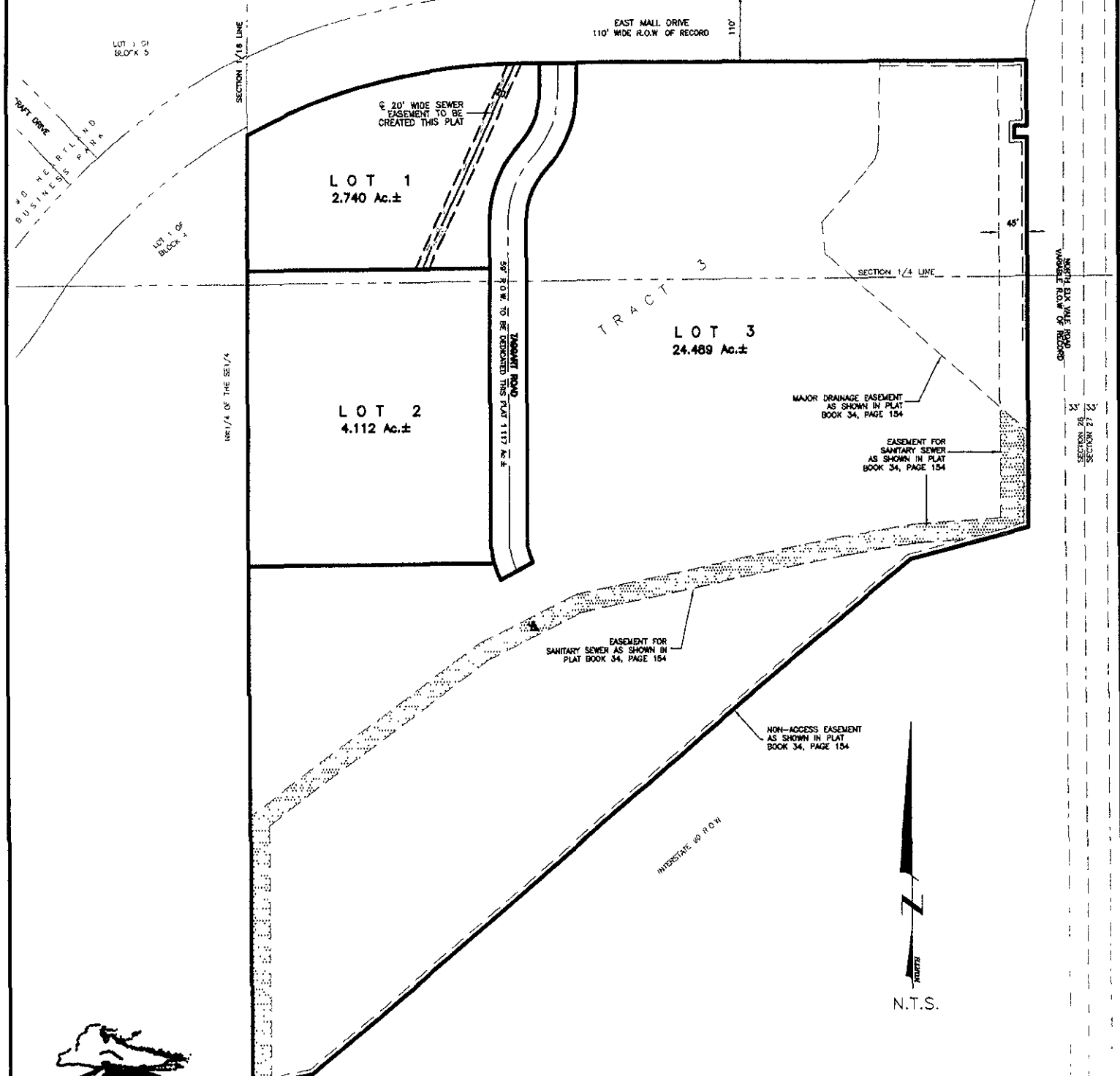


PLAT OF  
**LOTS 1, 2 AND 3 OF TRACT 3,**  
**DISCOVERY SUBDIVISION**  
 (formerly Tract 3 of Discovery Subdivision)  
 LOCATED IN THE NE1/4 OF THE SE1/4  
 AND IN THE SE1/4 OF THE NE1/4  
 SECTION 28, T2N, R8E, BHM  
 RAPID CITY, PENNINGTON COUNTY, SOUTH DAKOTA



CITY HALL 1903

**Renner & Associates, LLC.**

616 Sixth St. \* Rapid City, SD 57701 \* 605/721-7310  
 FAX: 605/721-7313 \* E-MAIL: Gary@RennerAssoc.com  
 \* Spearfish 605/717-0016 \*