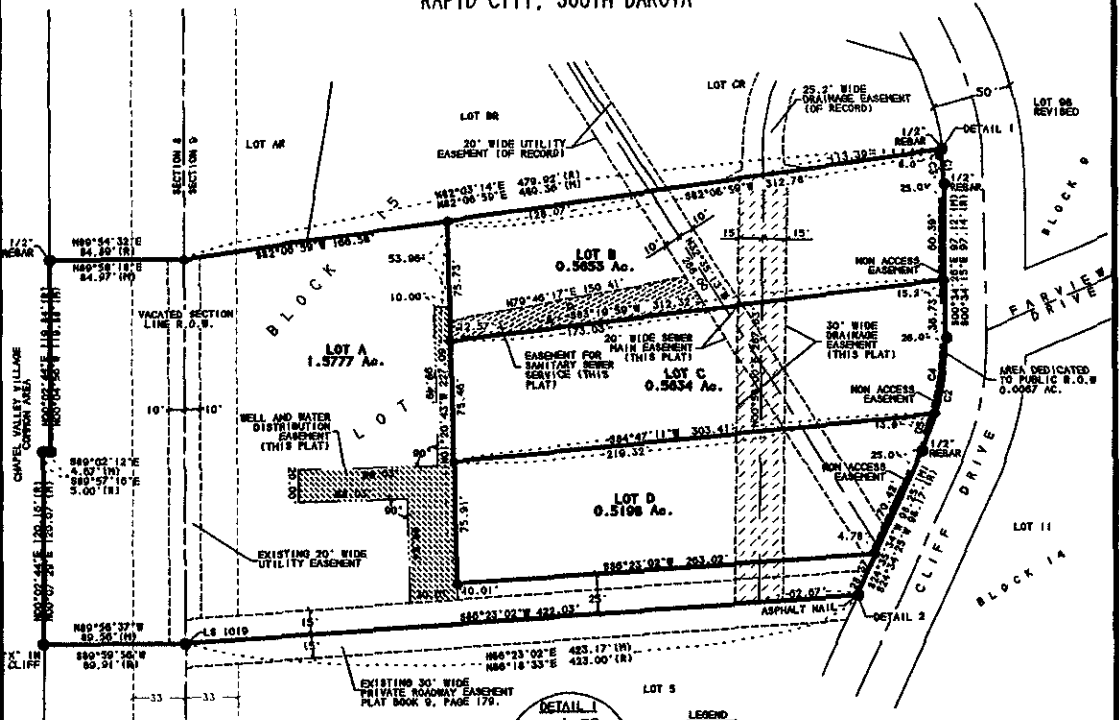


PLAT OF  
LOTS A THRU D OF LOT 4R  
OF BLOCK 15 OF CANYON LAKE HEIGHTS SUBDIVISION  
(FORMERLY LOT 4R OF BLOCK 15 OF CANYON LAKE HEIGHTS SUBDIVISION)  
LOCATED IN SE 1/4 OF SE 1/4 OF SECTION 8 AND THE  
SW 1/4 OF SW 1/4 OF SECTION 9, T1N, R7E, B.H.M.  
RAPID CITY, SOUTH DAKOTA



SCALE: 1" = 50'  
FEBRUARY 25, 2009



MEASURED CURVE DATA

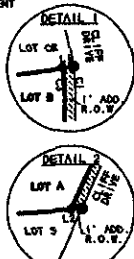
CURVE	DELTA	RADIUS	ARC	CHORD BEARING	CHORD DISTANCE
1	115.21	115.21	115.21	115.21	115.21
2	115.21	115.21	115.21	115.21	115.21
3	115.21	115.21	115.21	115.21	115.21
4	115.21	115.21	115.21	115.21	115.21
5	115.21	115.21	115.21	115.21	115.21
6	115.21	115.21	115.21	115.21	115.21
7	115.21	115.21	115.21	115.21	115.21
8	115.21	115.21	115.21	115.21	115.21
9	115.21	115.21	115.21	115.21	115.21
10	115.21	115.21	115.21	115.21	115.21

RECORD CURVE DATA

CURVE	DELTA	RADIUS	ARC	CHORD BEARING	CHORD DISTANCE
1	115.21	115.21	115.21	115.21	115.21
2	115.21	115.21	115.21	115.21	115.21
3	115.21	115.21	115.21	115.21	115.21
4	115.21	115.21	115.21	115.21	115.21
5	115.21	115.21	115.21	115.21	115.21
6	115.21	115.21	115.21	115.21	115.21
7	115.21	115.21	115.21	115.21	115.21
8	115.21	115.21	115.21	115.21	115.21
9	115.21	115.21	115.21	115.21	115.21
10	115.21	115.21	115.21	115.21	115.21

LINE DATA

LINE BEARING	DISTANCE
N89°58'56"W	115.21
S89°57'10"E	115.21
N89°58'56"W	115.21
S89°57'10"E	115.21



LEGEND  
● INDICATES FOUND SURVEY MONUMENT. "S/S" REBAR WITH CAP MARKED "FIELD NO. 2199 BY 5144" UNLESS OTHERWISE NOTED  
○ INDICATES SET "S/S" REBAR WITH IN SERVICE CAP MARKED "THINELSTAD LS 4371" UNLESS OTHERWISE NOTED.  
○ INDICATES SET "S/S" REBAR WITH SERVICE CAP MARKED "THINELSTAD LS 4371" FOR R.O.W. PC'S & PT'S  
(M) INDICATES MEASURED DIMENSION, THIS SURVEY.  
(R) INDICATES RECORD DIMENSION PREVIOUSLY RECORDED ON PLAT OR DEED.

NOTE: NEWLY ESTABLISHED R.O.W. PC'S & PT'S ARE NOT GRAPHICALLY SHOWN HEREON, BUT THEIR CORNER POSITIONS HAVE BEEN MARKED IN THE FIELD AS INDICATED ABOVE.  
BASIS OF BEARINGS BY GPS OBSERVATION - BASE LINE SET AT R.O.W. PC REFERENCED WITH A REBAR WITH CAP MARKED "FIELD NO. 2199 BY 5144"

8" WIDE UTILITY AND MINOR DRAINAGE EASEMENTS ALONG ALL INTERIOR FRONT, SIDE AND BACK LOT LINES.  
ANY MAJOR DRAINAGE EASEMENT SHOWN HEREON SHALL BE KEPT FREE OF ALL OBSTRUCTIONS INCLUDING BUT NOT LIMITED TO BUILDINGS, WALLS, FENCES, HEDGES, TREES AND SHRUBS. THESE EASEMENTS GRANT TO ALL PUBLIC AUTHORITIES THE RIGHT TO CONSTRUCT, OPERATE, MAINTAIN, INSPECT, AND REPAIR SUCH IMPROVEMENTS AND STRUCTURES AS IT DEEMS EXPEDIENT TO FACILITATE DRAINAGE FROM ANY SOURCE.

OWNER'S IDENTIFICATION  
STATE OF SOUTH DAKOTA  
COUNTY OF PENNINGTON s.d.

I, ANGELA CHARLSON, DO HEREBY CERTIFY THAT I AM THE OWNER OF THE LAND SHOWN AND DESCRIBED HEREON, THAT THE SURVEY WAS DONE AT MY REQUEST FOR THE PURPOSES INDICATED HEREON, THAT I DO APPROVE THE SURVEY AND WITHIN PLAT OF SAID LAND AND THAT THE DEVELOPMENT OF THIS LAND SHALL CONFORM TO ALL EXISTING APPLICABLE ZONING, SUBDIVISION, AND EROSION AND SEDIMENT CONTROL REGULATIONS.

ANY LAND SHOWN ON THE WITHIN PLAT AS DEDICATED TO PUBLIC RIGHT-OF-WAY IS HEREBY DEDICATED TO PUBLIC USE AND PUBLIC UTILITY USE AS SUCH, FOREVER, BUT SUCH DEDICATION SHALL NOT BE CONSTRUED TO BE A DONATION OF THE FEE OF SAID LAND.

OWNER: \_\_\_\_\_ ANGELA CHARLSON \_\_\_\_\_

STATE OF SOUTH DAKOTA s.d.  
COUNTY OF PENNINGTON

ON THIS \_\_\_\_\_ DAY OF \_\_\_\_\_ 2009, BEFORE ME, A NOTARY PUBLIC PERSONALLY APPEARED JOHN WENZ, KNOWN TO ME TO BE THE OWNER OF THE LAND DESCRIBED IN THE FOREGOING INSTRUMENT AND ACKNOWLEDGED TO ME THAT SAID OWNER EXECUTED THE SAME.

NOTARY PUBLIC \_\_\_\_\_  
MY COMMISSION EXPIRES \_\_\_\_\_

SURVEYOR'S CERTIFICATE

I, STEVEN O. THINELSTAD, REGISTERED LAND SURVEYOR, SD NO. 4371, DO HEREBY CERTIFY THAT AT THE DIRECTION OF THE OWNER OF THE HEREIN DESCRIBED LAND I HAVE MADE THE SURVEY AND WITHIN PLAT OF LAND DESCRIBED AND SHOWN HEREON, THE LOCATION AND DIMENSIONS ARE AS SHOWN ON THE PLAT AND SAID PLAT IS IN ALL RESPECTS TRUE AND CORRECT.

DATE \_\_\_\_\_ REGISTERED LAND SURVEYOR LS #4371



CERTIFICATE OF GROWTH MANAGEMENT DIRECTOR

I, GROWTH MANAGEMENT DIRECTOR OF THE CITY OF RAPID CITY HAVE REVIEWED THIS PLAT AND HAVE FOUND IT TO CONFORM TO THE SUBDIVISION REQUIREMENTS OF CHAPTER 20-03.05 OF THE RAPID CITY MUNICIPAL CODE AND AS SUCH I HAVE APPROVED THIS PLAT AS A FINAL PLAT.

DATE: \_\_\_\_\_  
GROWTH MANAGEMENT DIRECTOR OF THE CITY OF RAPID CITY

FEB 26 2009

Rapid City Growth Management Department  
RECEIVED

CERTIFICATE OF TREASURER

STATE OF SOUTH DAKOTA s.d.  
COUNTY OF PENNINGTON  
I, TREASURER OF PENNINGTON COUNTY, CERTIFY THAT ALL TAXES WHICH ARE DUE UPON THE TRACT AS SHOWN HEREON AND BY RECEIPTS, OF MY OFFICE HAVE BEEN PAID TO DATE.

\_\_\_\_\_ PENNINGTON COUNTY TREASURER

OFFICE OF DIRECTOR OF EQUALIZATION

STATE OF SOUTH DAKOTA s.d.  
COUNTY OF PENNINGTON

I, DIRECTOR OF EQUALIZATION, PENNINGTON COUNTY, CERTIFY THAT I HAVE RECEIVED A COPY OF THIS PLAT, AND IS FILED IN THE RECORDS OF MY OFFICE.

DATE \_\_\_\_\_ PENNINGTON COUNTY DIRECTOR OF EQUALIZATION

CERTIFICATE OF FINANCE OFFICER

I, FINANCE OFFICER OF THE CITY OF RAPID CITY, DO HEREBY CERTIFY THAT THE GROWTH MANAGEMENT DIRECTOR OF THE CITY OF RAPID CITY, HAS APPROVED THIS FINAL PLAT AS SHOWN HEREON.

DATE \_\_\_\_\_ FINANCE OFFICER OF THE CITY OF RAPID CITY

CERTIFICATE OF FINANCE OFFICER

I, FINANCE OFFICER OF THE CITY OF RAPID CITY, DO HEREBY CERTIFY THAT ALL SPECIAL ASSESSMENTS WHICH ARE DUE UPON THE WITHIN-DESCRIBED LANDS ARE FULLY PAID ACCORDING TO THE RECORDS OF MY OFFICE.

DATE \_\_\_\_\_ FINANCE OFFICER OF THE CITY OF RAPID CITY

OFFICE OF REGISTER OF DEEDS

STATE OF SOUTH DAKOTA s.d.  
COUNTY OF PENNINGTON  
FILED THIS \_\_\_\_\_ DAY OF \_\_\_\_\_ 2009, AT \_\_\_\_\_ O'CLOCK \_\_\_\_\_ M.  
IN BOOK \_\_\_\_\_ PAGE \_\_\_\_\_

\_\_\_\_\_ PENNINGTON COUNTY REGISTER OF DEEDS

CERTIFICATE OF STREET AUTHORITY

THE LOCATION OF THE PROPOSED PROPERTY LINES ADJACENT THE COUNTY OR STATE HIGHWAY OR CITY STREET AS SHOWN HEREON, IS HEREBY APPROVED. ANY CHANGE IN THE LOCATION OF THE PROPOSED ACCESS SHALL REQUIRE ADDITIONAL APPROVAL.

DATE: \_\_\_\_\_

\_\_\_\_\_ HIGHWAY AUTHORITY

PREPARED BY: STEVEN O. THINELSTAD  
BRITTON ENGINEERING & LAND SURVEYING, INC.  
2033 BLACK HAWK ROAD, SUITE 3  
BLACK HAWK, SOUTH DAKOTA 57718  
(605) 784-7655