

LEGEND

- INDICATES FOUND SURVEY MONUMENT, "5/8" REBAR WITH CAP MARKED "HEALD SD 2199 WY 5148", UNLESS OTHERWISE NOTED
- ⊙ INDICATES SET 5/8" REBAR WITH SURVEY CAP MARKED "THINGELSTAD LS 4371", UNLESS OTHERWISE NOTED
- (M) INDICATES MEASURED DIMENSION, THIS SURVEY
- (R) INDICATES RECORD DIMENSION PREVIOUSLY RECORDED ON PLAT OR DEED.

BASIS OF BEARINGS BY GPS OBSERVATION.

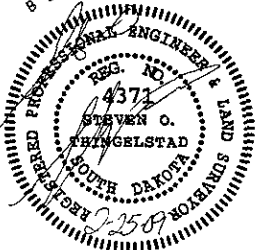
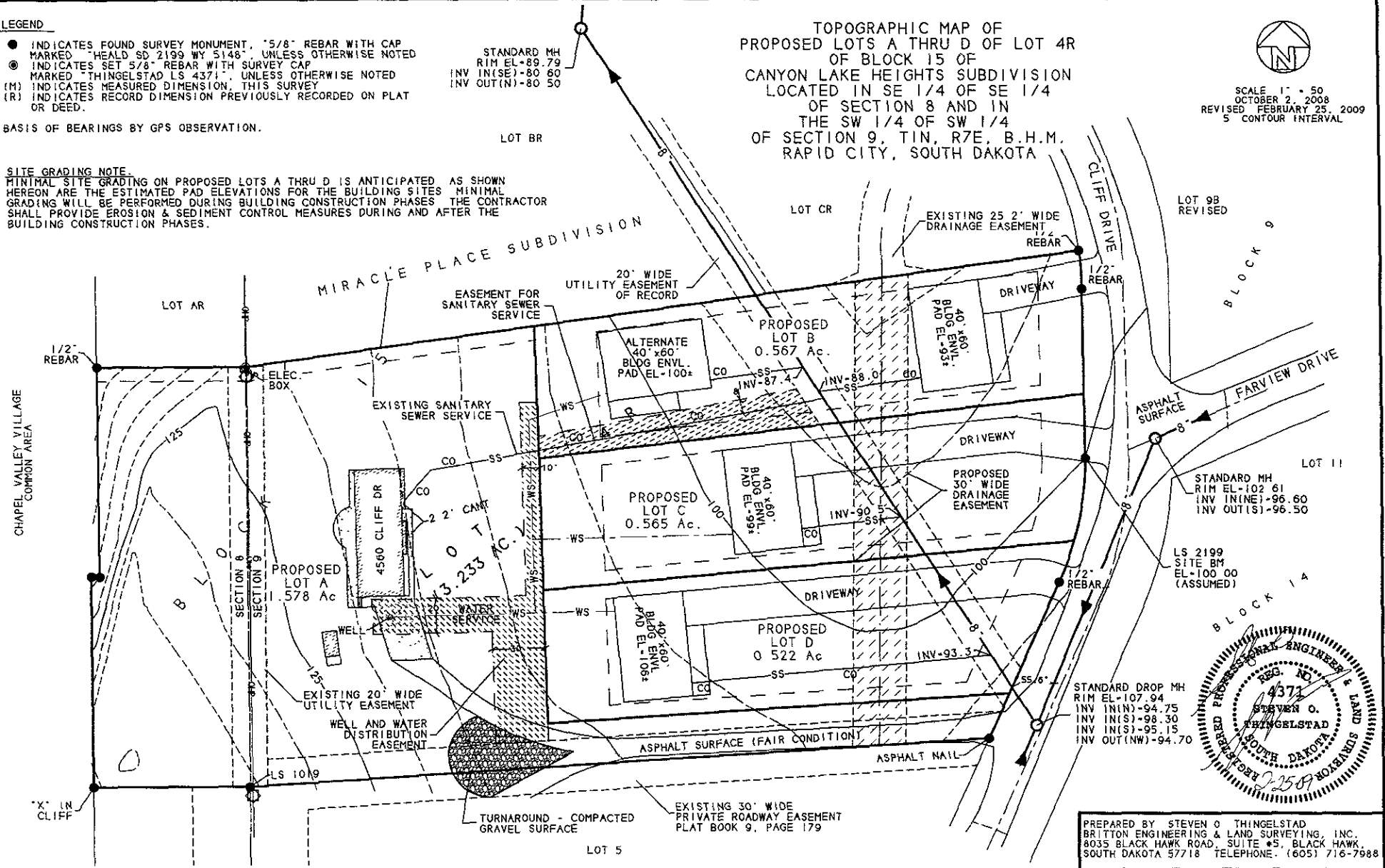
SITE GRADING NOTE.

MINIMAL SITE GRADING ON PROPOSED LOTS A THRU D IS ANTICIPATED AS SHOWN HEREON ARE THE ESTIMATED PAD ELEVATIONS FOR THE BUILDING SITES. MINIMAL GRADING WILL BE PERFORMED DURING BUILDING CONSTRUCTION PHASES. THE CONTRACTOR SHALL PROVIDE EROSION & SEDIMENT CONTROL MEASURES DURING AND AFTER THE BUILDING CONSTRUCTION PHASES.

TOPOGRAPHIC MAP OF
 PROPOSED LOTS A THRU D OF LOT 4R
 OF BLOCK 15 OF
 CANYON LAKE HEIGHTS SUBDIVISION
 LOCATED IN SE 1/4 OF SE 1/4
 OF SECTION 8 AND IN
 THE SW 1/4 OF SW 1/4
 OF SECTION 9, T1N, R7E, B.H.M.,
 RAPID CITY, SOUTH DAKOTA



SCALE 1" = 50'
 OCTOBER 2, 2008
 REVISED FEBRUARY 25, 2009
 5' CONTOUR INTERVAL



PREPARED BY STEVEN O THINGELSTAD
 BRITTON ENGINEERING & LAND SURVEYING, INC.
 4035 BLACK HAWK ROAD SUITE #5, BLACK HAWK
 SOUTH DAKOTA 57718 TELEPHONE: (605) 716-7988