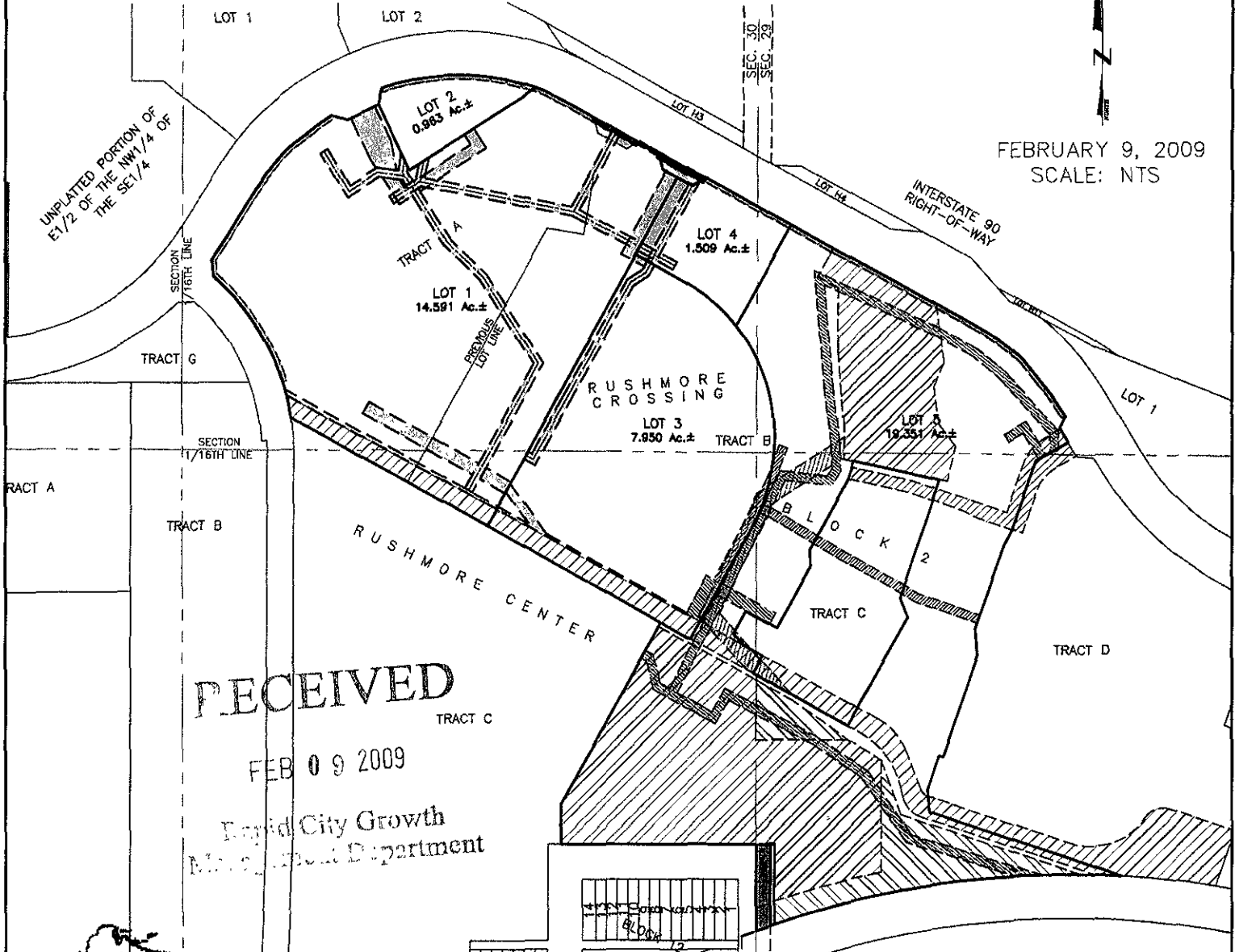


PLAT OF  
 LOTS 1-5 OF BLOCK 2,  
 RUSHMORE CROSSING,  
 VACATED PORTION OF CAMBELL STREET,  
 VACATED PORTION OF EGLIN STREET,  
 VACATED PORTION OF SECTION LINE RIGHT-OF-WAY,  
 AND DEDICATED EGLIN STREET RIGHT-OF-WAY  
 (formerly Tracts A and B, Block 2 of Rushmore Crossing,  
 a portion of Cambell Street Right-of-Way,  
 & a portion of Eglin Street Right-of-Way)  
 LOCATED IN THE W1/2 OF THE SW1/4 OF SECTION 29,  
 & THE E1/2 OF THE SE1/4 OF SECTION 30  
 ALL IN T2N, R8E, BHM  
 RAPID CITY, PENNINGTON COUNTY, SOUTH DAKOTA



FEBRUARY 9, 2009  
 SCALE: NTS

**RECEIVED**

FEB 09 2009

Rapid City Growth  
 Management Department



CITY HALL 1903

**Renner & Associates, LLC.**

616 Sixth St. \* Rapid City, SD 57701 \* 605/721-7310  
 FAX: 605/721-7313 \* E-MAIL: Gary@RennerAssoc.com